



**WATER
SUPPLY**



**SOLID WASTE
DISPOSAL**

**MEETING OUR REGION'S NEEDS
TODAY AND TOMORROW**

NORTH TEXAS MUNICIPAL WATER DISTRICT

2004 ANNUAL REPORT



**WASTEWATER
TREATMENT**

**A MESSAGE FROM JAMES M. (JIM) PARKS,
EXECUTIVE DIRECTOR**

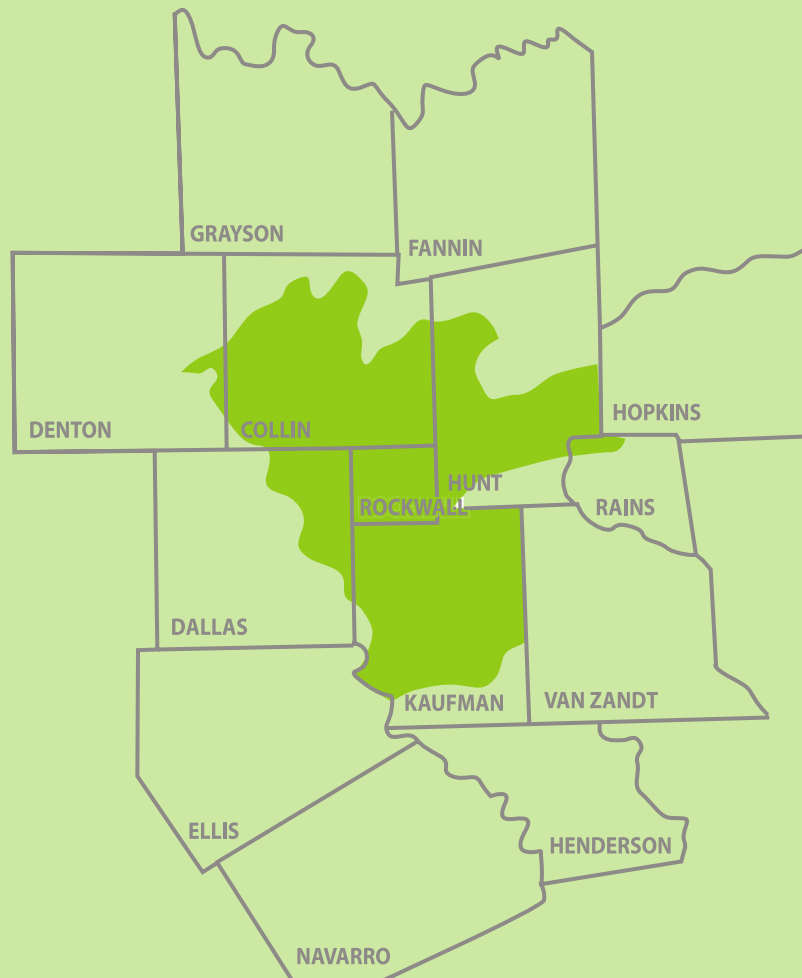
As dramatic as the region's growth has been in the past, the need for our regional services will increase even more rapidly during the next 50 years. This means existing resources must be efficiently utilized, new sources of water must be found or developed, additional treatment facilities and delivery systems must be built, enhanced technology must be incorporated into every program and service, and new challenges overcome to achieve a balance that is fiscally responsible.

And while all this is going on, the District must continue - as it always has - to deliver the superior level of service that our member cities and customers have come to expect, while simultaneously protecting the environment and controlling costs.

Past NTMWD Director Loncy Leake's observations are still true today. "Our strength lies in our unity and in our ability to work together for the benefit of all our cities. From the beginning, there's been a rare spirit of cooperation and feeling of camaraderie on our Board." While we reflect on the District's accomplishments as set out in our annual report, we are confident of our ability to serve the citizens of our region every day, every year.



**NORTH TEXAS MUNICIPAL
WATER DISTRICT SERVICE AREA**



**MEMBER
CITIES**

- Allen
- Farmersville
- Forney
- Frisco
- Garland
- Mesquite
- McKinney
- Plano
- Princeton
- Richardson
- Royse City
- Rockwall
- Wylie

WATER SYSTEM

NTMWD treated and delivered 82.1 billion gallons of water during the District's Water Year (August 2003-July 2004), a decrease of 0.5% from the 82.5 billion gallons delivered in the previous water year. Decreases or increases in total treated water deliveries are common from year to year depending on weather patterns and rainfall. During 2003-04, 41.24 inches of rainfall were recorded as compared to the previous year's 31.64 inches.

WATER SYSTEM MEMBER CITIES

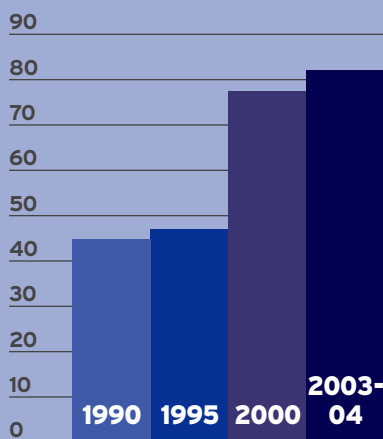
Allen
Farmersville
Forney
Frisco
Garland
McKinney
Mesquite
Plano
Princeton
Richardson
Rockwall
Royse City
Wylie

WATER SYSTEM CUSTOMER CITIES

Caddo Basin S.U.D.
Cash W.S.C.
College Mound W.S.C.
Copeville W.S.C.
Crandall
East Fork S.U.D.
Fairview
Fate
Forney Lake W.S.C.
Gastonia-Scurry W.S.C.
Josephine
Kaufman
Kaufman Four-One
Lavon W.S.C.
Little Elm
Lucas
Melissa
Milligan W.S.C.
Mt. Zion W.S.C.
Murphy
Nevada W.S.C.
N. Collin W.S.C.
Parker
Rose Hill W.S.C.
Rowlett
Sachse
Seis Lagos M.U.D.
Sunnyvale
Wylie W.S.C.



WATER CONSUMPTION

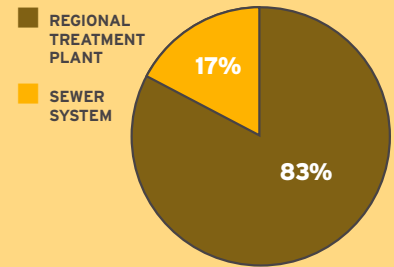


WASTEWATER SYSTEM

NTMWD's Wastewater System and Sewer System treated over 31 billion gallons of wastewater during the 2003-04 Operations Year (October 2003 - September 2004). A 7% increase over the volume treated the previous year.

WASTEWATER SYSTEMS

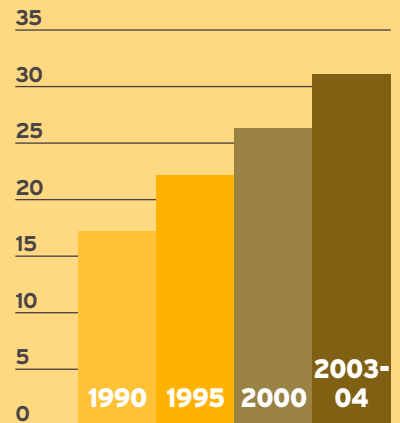
Allen
Forney
Frisco
McKinney
Mesquite
Plano
Princeton
Richardson



SEWER SYSTEMS

Farmersville
Frisco
Heath
Murphy
Rockwall
Royse City
Seagoville
Seis Lagos
Wylie

WASTEWATER TREATED

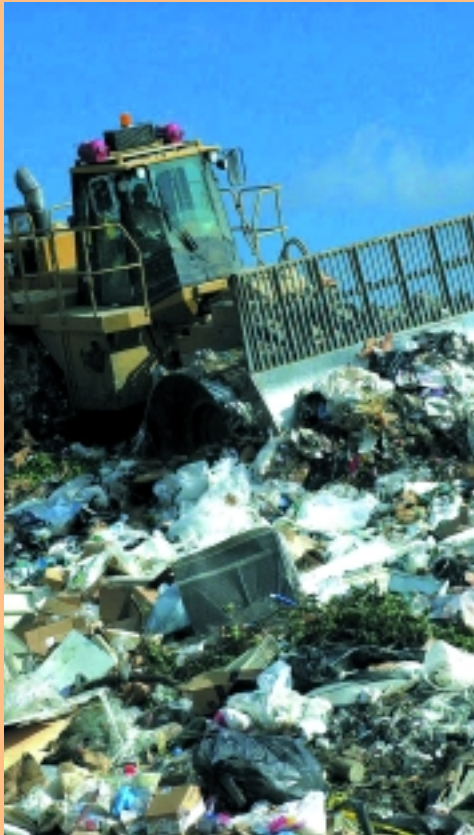


SOLID WASTE SYSTEM

During the 2003-04 Operations Year, NTMWD safely disposed of over 676,000 tons of commercial and municipal waste. The Solid Waste Member Cities accounted for 91 percent of the tonnage disposed at both locations. Outside customers, including private haulers, contributed the remaining nine percent. NTMWD utilized the Regional Landfill in McKinney until the opening of the 121 Regional Disposal Facility located north of McKinney in August 2004.

SOLID WASTE SYSTEM MEMBER CITIES

Allen
Frisco
McKinney
Plano
Richardson



CONSTRUCTION

Water System construction contracts totaled over \$118 million. Major projects at the treatment plants included enhanced coagulation at Plant II and the 140 MGD construction at Plant IV. Improvements to the Shiloh Pump Station and the Frisco-McKinney, Mesquite, and Royse City pipeline projects were underway. A site was obtained for the development of the East Fork Reuse Project.

Wastewater system construction totaled over \$69 million. Included were a 16 MGD expansion to the Wilson Creek WWTP, odor control projects for Stewart Creek West WWTP, and the construction of the Muddy Creek Regional WWTP. Enhancements were also made to the interceptor systems.

Construction in the Solid Waste System totaled over \$18.7 million. The major construction projects included the 121 RDF and the regional composting facility at that site. NTMWD established a regional composting program with the City of Plano. As part of the composting program, a brush grinding facility at the Custer Road Transfer Station was completed and placed into service in 2004.



FINANCIALS

	BUDGET 2002/03	BUDGET 2003/04	% INCREASE
REGIONAL WATER SYSTEM	\$ 79,539,896	\$ 86,943,391	9.3%
REGIONAL WASTEWATER SYSTEM	\$ 23,856,121	\$ 25,201,628	5.6%
SEWER SYSTEM	\$ 9,096,570	\$ 10,802,929	18.8%
INTERCEPTOR SYSTEM	\$ 9,138,616	\$ 9,320,538	2.0%
REGIONAL SOLID WASTE SYSTEM	\$ 14,896,476	\$ 16,331,099	9.6%

WATER CONSERVATION PLANNING

During 2004, the North Texas Municipal Water District Board of Directors adopted an enhanced version of its Water Conservation Plan. The District also completed a Model Water Conservation Plan for use by its member cities and customers. Both documents follow the guidelines and requirements of the Texas Commission on Environmental Quality. Plan objectives are: to reduce water consumption from the levels that would prevail without conservation efforts; to reduce the loss and waste of water; to improve efficiency in the use of water, to document the level of recycling and reuse in the water supply and to extend the life of current water supplies by reducing the rate of growth in demand. To read the plan, see www.ntmwd.com.

NTMWD: A UNIQUE MODEL

The North Texas Municipal Water District is a model for providing water, wastewater, and solid waste disposal services on a regional basis. Since it was established in 1951, the District has set many precedents and distinguished itself for its quality and affordable systems, now operating within 1,600 square miles and serving

1.3 million people. NTMWD has never levied or spent a single cent of tax money for capital or operating expenses. It has wide-ranging authority to serve any member community. All services are provided through contracts in which members pledge payments to the District from revenues collected from their respective water, wastewater, and solid waste customers. NTMWD's three systems are completely separate financially; no system may subsidize or draw revenue from the other.

As a conservation and reclamation district, NTMWD has established forward-thinking policies that are flexible enough to meet the ever-changing needs of this dynamic area. The District protects the environment through its advanced treatment processes and disposal techniques. Its superior water meets all state and federal standards for quality and safety, and all wastewater systems that have been acquired by the District in recent years are quickly being modified to meet high standards. Its newest solid waste disposal facility has been designed and is being operated to protect streams, lakes, ground water resources and land from any threat of pollution from the waste materials produced each day by citizens living in communities served by the District.

NTMWD BOARD OF DIRECTORS 2003-2004



SEATED FRONT ROW:

Joe Farmer VICE PRESIDENT, ALLEN
Jerry Yancey SECRETARY, PLANO
Marvin Fuller PRESIDENT, WYLIE
James M. (Jim) Parks
EXECUTIVE DIRECTOR

STANDING SECOND ROW:

Charles McKissick MCKINNEY
Bill Harrison FARMERSVILLE
Bobby Robinson MESQUITE

James Kerr ALLEN
Richard H. Roach GARLAND
Ken Bell RICHARDSON
C. L. McCuistion, Jr. FORNEY

STANDING 3RD ROW:

Don Cates FORNEY
Alex R. Schell, III PLANO
Darwin Whiteside ROYSE CITY
Larry Parks ROCKWALL
Gary Downey FRISCO

STANDING BACK ROW:

Patrick Nicklen PRINCETON
John Sweeden RICHARDSON
Johnie Marshall GARLAND
Bill Loffland ROCKWALL
Lynn Shuyler FRISCO

NOT PICTURED:

Harry Tibbals WYLIE
Terry Sam Anderson MESQUITE
Joe Joplin MCKINNEY

NTMWD STAFF

James M. (Jim) Parks
EXECUTIVE DIRECTOR

David E. Stephens
DEPUTY DIRECTOR

Mike Rickman
EXECUTIVE ASSISTANT

Joseph M. Stankiewicz
DIRECTOR OF OPERATIONS

Judd Sanderson
DIRECTOR OF FINANCE
ACCOUNTING & PERSONNEL

Jerry D. Allen
RESEARCH AND
DEVELOPMENT MANAGER

Barbara A. Barnett
ACCOUNTING MANAGER

David H. Canup
SOLID WASTE SYSTEM MANAGER

Randel L. Dobbs
PLANNING OFFICER

Melisa Fuller
ASSISTANT TO THE EXECUTIVE DIRECTOR

Michael E. Gooch
LABORATORY MANAGER

Denise Hickey
PUBLIC RELATIONS COORDINATOR

James D. Kelly
ENGINEERING OFFICER

Steven W. Long
WATER SYSTEM MANAGER

M. Dolan McKnight
ENVIRONMENTAL SERVICES OFFICER

John L. Montgomery
HUMAN RESOURCES MANAGER

David C. Morgan
OPERATIONS COORDINATOR
AND SAFETY OFFICER

Mark Christopher
NETWORK ADMINISTRATOR

Ken W. Wesson
WASTEWATER SYSTEM MANAGER



NORTH TEXAS MUNICIPAL WATER DISTRICT

505 East Brown Street • P.O. Box 2408 • Wylie, Texas 75098

(972)442-5405 phone • (972)442-5405 fax

www.ntmwd.com

Regional Service Through Unity