

1. 1:00 P.M. Wastewater Committee Meeting Agenda

Documents:

[2025-09-24 WASTEWATER COMMITTEE AGENDA.PDF](#)

- 1.1. 1:00 PM Wastewater Committee Meeting Presentation

Documents:

[2025-09-24 WASTEWATER COMMITTEE PRESENTATION.PDF](#)



## **NORTH TEXAS MUNICIPAL WATER DISTRICT**

**501 E. Brown Street • Wylie, Texas 75098**

**(972) 442-5405**

### **WASTEWATER COMMITTEE MEETING (VIA VIDEOCONFERENCE)**

**WEDNESDAY, SEPTEMBER 24, 2025**

**1:00 P.M.**

Notice is hereby given pursuant to V.T.C.A., Government Code, Chapter 551, that the Board of Directors of North Texas Municipal Water District (NTMWD), Wastewater Committee, will hold a regular meeting by videoconference, accessible to the public, on Wednesday, September 24, 2025, at 1:00 p.m.

The Presiding Officer will be present at the meeting location, the NTMWD Administrative Offices, 501 E. Brown Street, Wylie, Texas 75098, with two-way video and audio communication between Board members participating by videoconference, establishing a quorum. The public may attend the meeting in person at the meeting location. Audio and video of Board members participating by videoconference will be visible to members of the public in attendance at the meeting location. The meeting will be recorded, and the audio recording will be available on the NTMWD website after the meeting.

Members of the public wishing to listen to live audio from the meeting may do so by calling in at (469) 210-7159 or toll free (844) 621-3956 and entering the following access code: 928 587 040. Please note this line will not provide for two-way communication and public comment at the meeting must be made in person at the meeting location.

### **AGENDA**

#### **I. CALL TO ORDER**

#### **II. PUBLIC COMMENTS**

We welcome members, customers, and the public to participate during the public comment period of the meeting. Before the start of the meeting, speakers must complete and submit a "Public Comment Registration Form." During this portion of the meeting, speakers will be recognized by name and asked to provide their comments. The time limit is three (3) minutes per speaker, not to exceed a total of thirty (30) minutes for all speakers. Texas Open Meetings Act prohibits the Committee from discussing items not listed in the agenda. However, Committee Members may respond with factual or policy information.

#### **III. OPENING REMARKS**

- A. Chair/Executive Director/Committee Champion Status Report concerning legislation and regulatory matters, budgets, current projects and ongoing Wastewater System programs of the District

#### **IV. ACTION ITEMS**

- A. Consider approval of Wastewater Committee meeting minutes – June 25, 2025

## WASTEWATER COMMITTEE MEETING AGENDA

SEPTEMBER 24, 2025

PAGE 2

- B. Rowlett Creek Regional Wastewater Treatment Plant Administration Building, Project No. 301-0524-19; Tabulation of Bids and Award of Contract
- C. Rowlett Creek Regional Wastewater Treatment Plant Peak Flow Management Improvements, Phase II; Project No. 301-0471-17; Engineering Services Agreement, and Construction Management and Inspection Services
- D. Panther Creek Wastewater Treatment Plant Expansion to 15 MGD; Project No. 307-0493-18; Change Order No. 1
- E. Sister Grove Regional Water Resource Recovery Facility Influent Junction Structure; Project No. 301-0674-25; Engineering Services Agreement
- F. Wilson Creek Regional Wastewater Treatment Plant Primary Clarifiers, Ultraviolet Light and Centrifuge Improvements, Project No. 301-0606-22; Tabulation of Bids, Award of Contract
- G. South Mesquite Creek Regional Wastewater Treatment Plant Peak Flow Management and Expansion, Project No. 301-0525-18; Amendment No. 9, Partial GMP No. 7, Engineering Services During Construction, and Additional Construction Management, Inspection and Material Testing Services

### V. DISCUSSION ITEMS

- A. Buffalo Creek Parallel Interceptor, Phase II, Final Design and Engineering Services Agreement
- B. Wastewater systems overview and key performance indicator highlights
- C. Regulatory compliance update
- D. Opportunity for Committee members to provide feedback on Wastewater Committee meeting or request potential future agenda items

### VI. ADJOURNMENT

#### **REQUIRED LEGAL NOTICES**

***The Wastewater Committee is authorized by the Texas Open Meetings Act to convene in closed or executive session for certain purposes. These purposes include receiving legal advice from its attorney (Section 551.071); discussing real property matters (Section 551.072); discussing gifts and donations (Section 551.073); discussing personnel matters (Section 551.074); or discussing security personnel or devices (Section 551.076). If the Wastewater Committee determines to go into executive session on any item on this agenda, the Presiding Officer will announce that an executive session will be held and will identify the item to be discussed and provision of the Open Meetings Act that authorizes the closed or executive session.***

***Persons with disabilities who plan to attend the NTMWD meeting and who may need auxiliary aids or services are requested to contact Shannon Sauceman in the NTMWD Administrative Offices at (972) 442-5405 as soon as possible. All reasonable efforts will be taken to make the appropriate arrangements.***

***Pursuant to Section 30.05, Penal Code (criminal trespass), a person may not enter this property with a firearm. Pursuant to Section 30.06, Penal Code (trespass by license holder with a concealed handgun), a person licensed under Subchapter H, Chapter 411, Government Code (handgun licensing law), may not enter this property with a concealed handgun. Pursuant to Section 30.07, Penal Code (trespass by license holder with an openly carried handgun), a person licensed under Subchapter H, Chapter 411, Government Code (handgun licensing law), may not enter this property with a handgun that is carried openly.***



NORTH  
TEXAS  
MUNICIPAL  
WATER  
DISTRICT

*Regional. Reliable. Everyday.*

Regional Service Through Unity:  
Meeting Our Region's Needs Today  
And Tomorrow



*Sister Grove Regional Water Resource Recovery Facility*

**WASTEWATER COMMITTEE MEETING**

**SEPTEMBER 24, 2025**



# Agenda

- I. CALL TO ORDER
- II. PUBLIC COMMENTS
- III. OPENING REMARKS
- IV. ACTION ITEMS
- V. DISCUSSION ITEMS
- VI. ADJOURNMENT



# Agenda

## IV. ACTION ITEMS

- A. Consider approval of Wastewater Committee meeting minutes – June 25, 2025
- B. Rowlett Creek Regional Wastewater Treatment Plant Administration Building, Project No. 301-0524-19; Tabulation of Bids and Award of Contract
- C. Rowlett Creek Regional Wastewater Treatment Plant Peak Flow Management Improvements, Phase II; Project No. 301-0471-17; Engineering Services Agreement, and Construction Management and Inspection Services
- D. Panther Creek Wastewater Treatment Plant Expansion to 15 MGD; Project No. 307-0493-18; Change Order No. 1
- E. Sister Grove Regional Water Resource Recovery Facility Influent Junction Structure; Project No. 301-0674-25; Engineering Services Agreement
- F. Wilson Creek Regional Wastewater Treatment Plant Primary Clarifiers, Ultraviolet Light and Centrifuge Improvements, Project No. 301-0606-22; Tabulation of Bids, Award of Contract
- G. South Mesquite Creek Regional Wastewater Treatment Plant Peak Flow Management and Expansion, Project No. 301-0525-18; Amendment No. 9, Partial GMP No. 7, Engineering Services During Construction, and Additional Construction Management, Inspection and Material Testing Services

## V. DISCUSSION ITEMS

- A. Buffalo Creek Parallel Interceptor, Phase II, Final Design and Engineering Services Agreement
- B. Wastewater systems overview and key performance indicator highlights
- C. Regulatory compliance update
- D. Opportunity for Committee members to provide feedback on Wastewater Committee meeting or request potential future agenda items





# Agenda

## IV. ACTION ITEMS

- A. Consider approval of Wastewater Committee meeting minutes – June 25, 2025
- B. Rowlett Creek Regional Wastewater Treatment Plant Administration Building, Project No. 301-0524-19; Tabulation of Bids and Award of Contract
- C. Rowlett Creek Regional Wastewater Treatment Plant Peak Flow Management Improvements, Phase II; Project No. 301-0471-17; Engineering Services Agreement, and Construction Management and Inspection Services
- D. Panther Creek Wastewater Treatment Plant Expansion to 15 MGD; Project No. 307-0493-18; Change Order No. 1
- E. Sister Grove Regional Water Resource Recovery Facility Influent Junction Structure; Project No. 301-0674-25; Engineering Services Agreement
- F. Wilson Creek Regional Wastewater Treatment Plant Primary Clarifiers, Ultraviolet Light and Centrifuge Improvements, Project No. 301-0606-22; Tabulation of Bids, Award of Contract
- G. South Mesquite Creek Regional Wastewater Treatment Plant Peak Flow Management and Expansion, Project No. 301-0525-18; Amendment No. 9, Partial GMP No. 7, Engineering Services During Construction, and Additional Construction Management, Inspection and Material Testing Services

## V. DISCUSSION ITEMS

- A. Buffalo Creek Parallel Interceptor, Phase II, Final Design and Engineering Services Agreement
- B. Wastewater systems overview and key performance indicator highlights
- C. Regulatory compliance update
- D. Opportunity for Committee members to provide feedback on Wastewater Committee meeting or request potential future agenda items

## IV. ACTION ITEMS

- A. Consider approval of Wastewater Committee meeting minutes – June 25, 2025
- B. Rowlett Creek Regional Wastewater Treatment Plant Administration Building, Project No. 301-0524-19; Tabulation of Bids and Award of Contract
- C. Rowlett Creek Regional Wastewater Treatment Plant Peak Flow Management Improvements, Phase II; Project No. 301-0471-17; Engineering Services Agreement, and Construction Management and Inspection Services
- D. Panther Creek Wastewater Treatment Plant Expansion to 15 MGD; Project No. 307-0493-18; Change Order No. 1
- E. Sister Grove Regional Water Resource Recovery Facility Influent Junction Structure; Project No. 301-0674-25; Engineering Services Agreement
- F. Wilson Creek Regional Wastewater Treatment Plant Primary Clarifiers, Ultraviolet Light and Centrifuge Improvements, Project No. 301-0606-22; Tabulation of Bids, Award of Contract
- G. South Mesquite Creek Regional Wastewater Treatment Plant Peak Flow Management and Expansion, Project No. 301-0525-18; Amendment No. 9, Partial GMP No. 7, Engineering Services During Construction, and Additional Construction Management, Inspection and Material Testing Services

## V. DISCUSSION ITEMS

- A. Buffalo Creek Parallel Interceptor, Phase II, Final Design and Engineering Services Agreement
- B. Wastewater systems overview and key performance indicator highlights
- C. Regulatory compliance update
- D. Opportunity for Committee members to provide feedback on Wastewater Committee meeting or request potential future agenda items





# Rowlett Creek Regional Wastewater Treatment Plant Administration Building

## Project Purpose

- Provide an administration building of approximately 6,000 square feet to be constructed on land adjacent to the Rowlett Creek RWWTP to better utilize the existing space of the plant for treatment facilities.

## Project Components

- New administration building with workspaces, control room, break/training room, laboratory, and locker rooms
- Site improvements include driveways, parking, fencing, lighting and landscaping
- New driveway from 14<sup>th</sup> Street
- New 8-inch water lines from 14<sup>th</sup> Street and Los Rios Blvd for fire protection





# Rowlett Creek Regional Wastewater Treatment Plant Administration Building

Bidder	Total Bid	Recommendation
McGough Construction Company, LLC	\$10,497,338	
Key Construction Texas, LLC	\$10,632,000	Best Value Proposer Recommended for Award
MDI, Inc., General Contractors	\$11,146,485	
Pecos Construction, LLC	\$11,146,485	
Archer Western Construction, LLC	\$12,984,320	
Engineer's OPCC	\$12,143,187	

## Construction Management and Inspection Services

- Construction Management and Inspection Services were awarded at the February 2025 NTMWD Board of Directors meeting, Administrative Memorandum No. 25-6113



# Rowlett Creek Regional Wastewater Treatment Plant Administration Building

## Competitive Sealed Proposal Method

Proposals were submitted on Friday, August 8, 2025, and the review committee met on Thursday, August 14, 2025. Key Construction was selected as the best value to the District based on the weighted criteria listed in the request for proposals.

Key Construction excelled in two categories, project approach and project experience/performance, which increased its total score above the low bidder, McGough Construction.

Key Construction's strengths:

- Approach was tailored to this project, not generic, describing each phase of construction.
- Project Experience listed green field projects of similar construction compared to renovation projects submitted by McGough and MDI.
- Past Performance submittal included favorable reference letters from City of Grand Prairie, Grand Prairie Fire Department and Architect.



## Committee Consideration

The Executive Director, NTMWD staff and GSR Andrade Architects recommend the Board of Directors authorize the award of a contract as follows:

Contractor: Key Construction Texas, LLC

Scope: Construction

Project: No. 301-0524-19, Rowlett Creek Regional Wastewater Treatment Plant Administration Building

Amount: \$10,632,000

Funding: Regional Wastewater System Extendable Commercial Paper Program

## IV. ACTION ITEMS

- A. Consider approval of Wastewater Committee meeting minutes – June 25, 2025
- B. Rowlett Creek Regional Wastewater Treatment Plant Administration Building, Project No. 301-0524-19; Tabulation of Bids and Award of Contract
- C. Rowlett Creek Regional Wastewater Treatment Plant Peak Flow Management Improvements, Phase II; Project No. 301-0471-17; Engineering Services Agreement, and Construction Management and Inspection Services
- D. Panther Creek Wastewater Treatment Plant Expansion to 15 MGD; Project No. 307-0493-18; Change Order No. 1
- E. Sister Grove Regional Water Resource Recovery Facility Influent Junction Structure; Project No. 301-0674-25; Engineering Services Agreement
- F. Wilson Creek Regional Wastewater Treatment Plant Primary Clarifiers, Ultraviolet Light and Centrifuge Improvements, Project No. 301-0606-22; Tabulation of Bids, Award of Contract
- G. South Mesquite Creek Regional Wastewater Treatment Plant Peak Flow Management and Expansion, Project No. 301-0525-18; Amendment No. 9, Partial GMP No. 7, Engineering Services During Construction, and Additional Construction Management, Inspection and Material Testing Services

## V. DISCUSSION ITEMS

- A. Buffalo Creek Parallel Interceptor, Phase II, Final Design and Engineering Services Agreement
- B. Wastewater systems overview and key performance indicator highlights
- C. Regulatory compliance update
- D. Opportunity for Committee members to provide feedback on Wastewater Committee meeting or request potential future agenda items



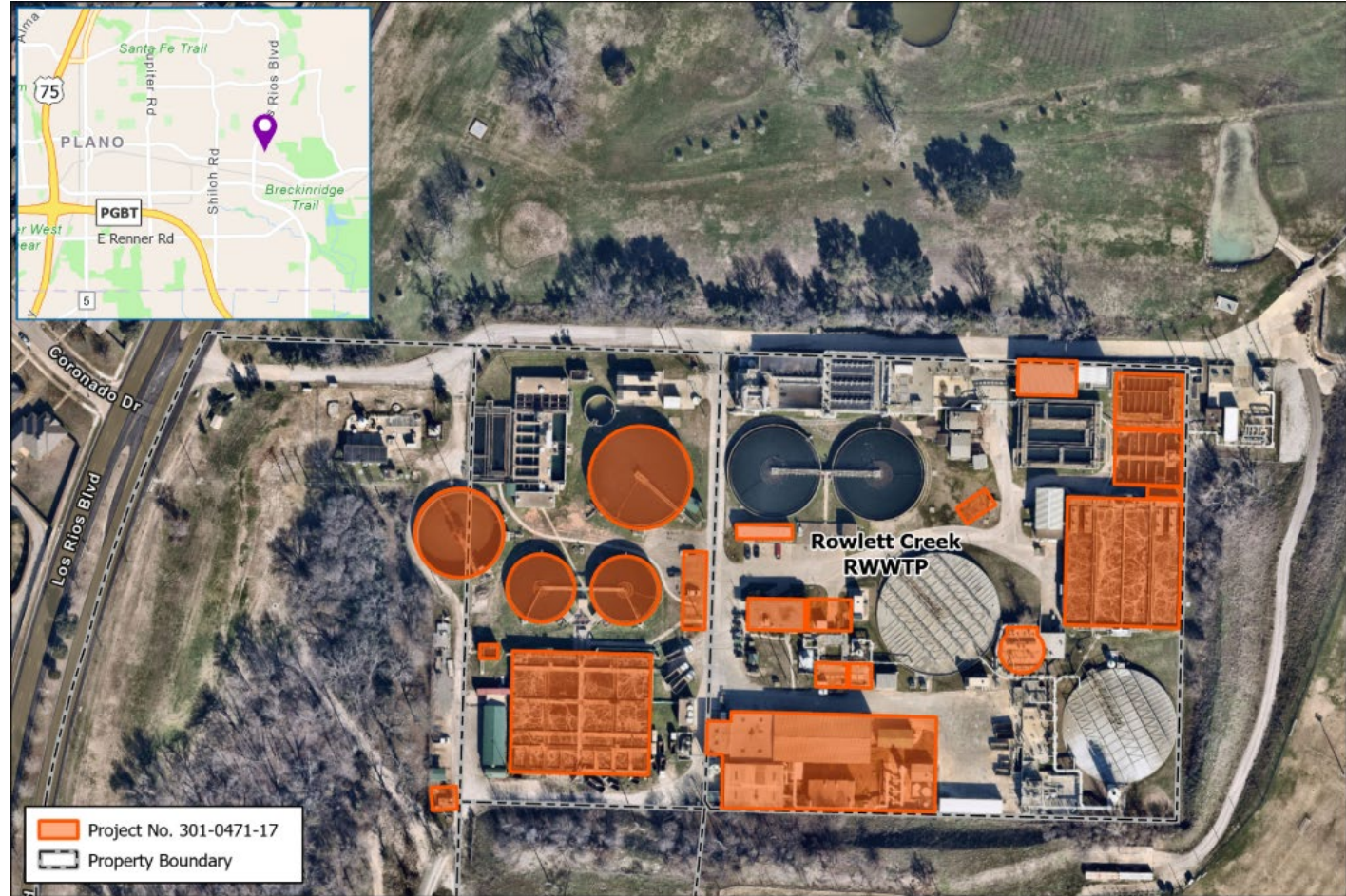
# Rowlett Creek Peak Flow Improvements, Phase II

## Project Purpose

- Expansion of treatment capacity of existing facilities from the current 77.5 MGD peak two-hour flow to 95 MGD peak two-hour flow

## Project Components

- Influent pumping, Train A aeration blowers, conversion to step feed, clarifier improvements, ferric sulfate facility, filtration facility, ultraviolet light (UV) disinfection facility, and plant outfall pipeline
- Electrical and SCADA system improvements and solids handling building



# Rowlett Creek Peak Flow Improvements, Phase II

## **Engineering Services During Construction (Hazen and Sawyer) - \$3,467,000**

- Project management, coordination with CMAR, and meetings for the projected 42 months construction duration
- Construction support services for the initial guaranteed maximum price
- Estimated 600 submittals and 250 RFIs

## **Construction Management and Inspection Services (FNI) - \$3,595,524**

- Outsourced construction management and inspection services to cover all disciplines for 24 months
- Scope includes construction materials testing





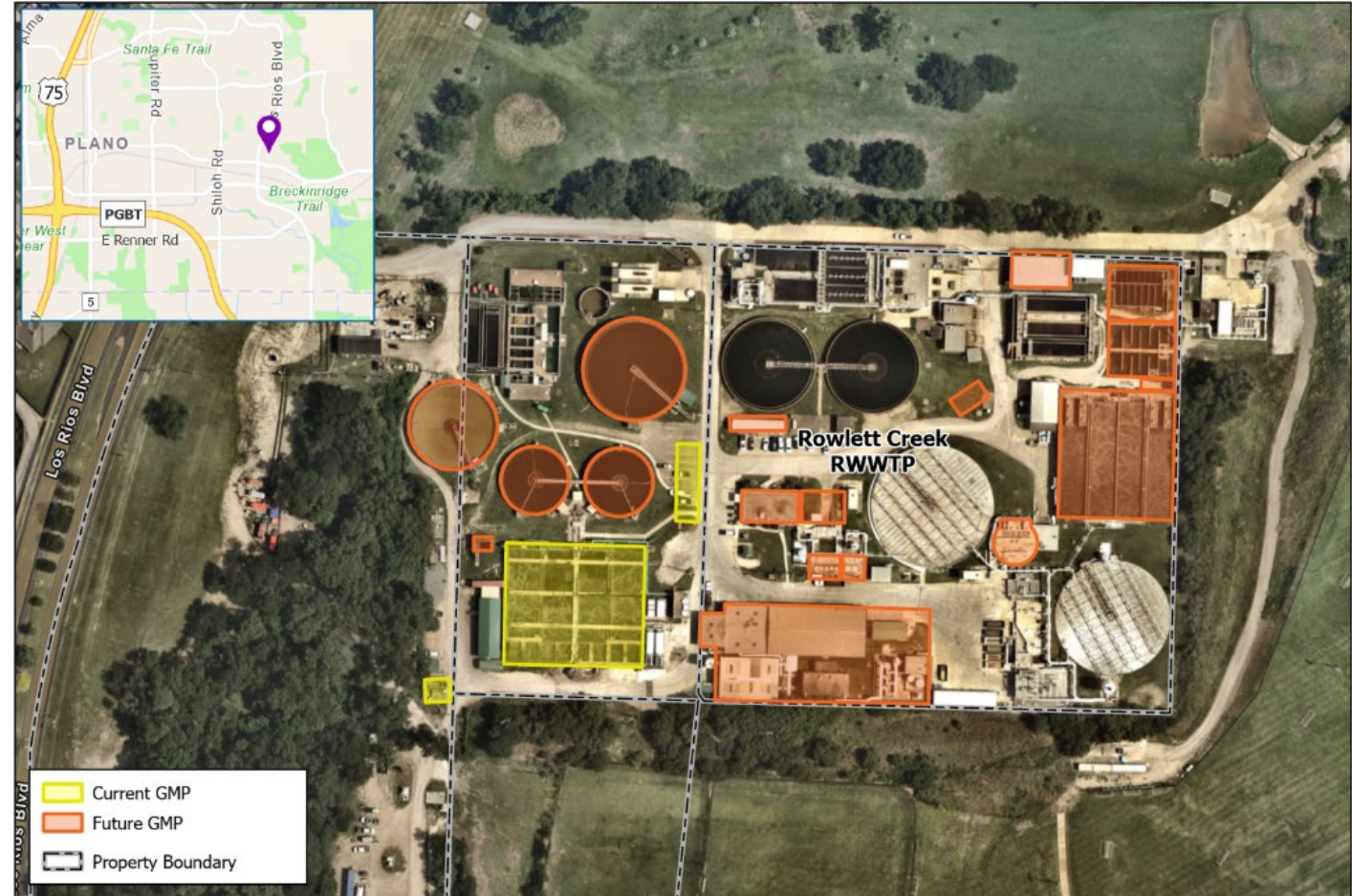
# Rowlett Creek Peak Flow Improvements, Phase II – First Work Authorization Package

## Preliminary CMAR Plan

- Three major milestones
- Nine work authorizations

## Scope of Work GMP 1

- Renewal of Junction Box No. 1 and associated manholes and piping
- Train A Aeration Basin diffusers and structural modifications
- New Train A Blower Building





# Rowlett Creek Peak Flow Improvements, Phase II – Anticipated Future Work Authorizations

## **Project Components for 2026**

- UV, Filter, Solids, and Odor Control Equipment Procurement
- Plant Outfall Pipeline and Structure

## **Project Components for 2027**

- UV, Filter, and Solids Handling Facilities
- Train B Aeration Basin modifications

## **Project Components for 2028**

- Lift Station and Secondary Clarifier Rehabilitation
- Chemical Facilities
- Non-Potable Water Pump Station



## Committee Consideration

The Executive Director and NTMWD staff recommend the Board of Directors authorize the award of a contract as follows:

Consultant: Hazen and Sawyer, Inc.

Construction  
Manager: Freese and Nichols, Inc.

Scope: Engineering Services During Construction, Construction Management and Inspection Services

Project: 301-0471-17; Rowlett Creek Regional WWTP Peak Flow Management Improvements, Phase II

Amount: Engineering Services During Construction: \$3,467,000  
Construction Management and Inspection Services: \$3,595,524

Funding: Regional Wastewater System Extendable Commercial Paper Program

## IV. ACTION ITEMS

- A. Consider approval of Wastewater Committee meeting minutes – June 25, 2025
- B. Rowlett Creek Regional Wastewater Treatment Plant Administration Building, Project No. 301-0524-19; Tabulation of Bids and Award of Contract
- C. Rowlett Creek Regional Wastewater Treatment Plant Peak Flow Management Improvements, Phase II; Project No. 301-0471-17; Engineering Services Agreement, and Construction Management and Inspection Services
- D. Panther Creek Wastewater Treatment Plant Expansion to 15 MGD; Project No. 307-0493-18; Change Order No. 1
- E. Sister Grove Regional Water Resource Recovery Facility Influent Junction Structure; Project No. 301-0674-25; Engineering Services Agreement
- F. Wilson Creek Regional Wastewater Treatment Plant Primary Clarifiers, Ultraviolet Light and Centrifuge Improvements, Project No. 301-0606-22; Tabulation of Bids, Award of Contract
- G. South Mesquite Creek Regional Wastewater Treatment Plant Peak Flow Management and Expansion, Project No. 301-0525-18; Amendment No. 9, Partial GMP No. 7, Engineering Services During Construction, and Additional Construction Management, Inspection and Material Testing Services

## V. DISCUSSION ITEMS

- A. Buffalo Creek Parallel Interceptor, Phase II, Final Design and Engineering Services Agreement
- B. Wastewater systems overview and key performance indicator highlights
- C. Regulatory compliance update
- D. Opportunity for Committee members to provide feedback on Wastewater Committee meeting or request potential future agenda items



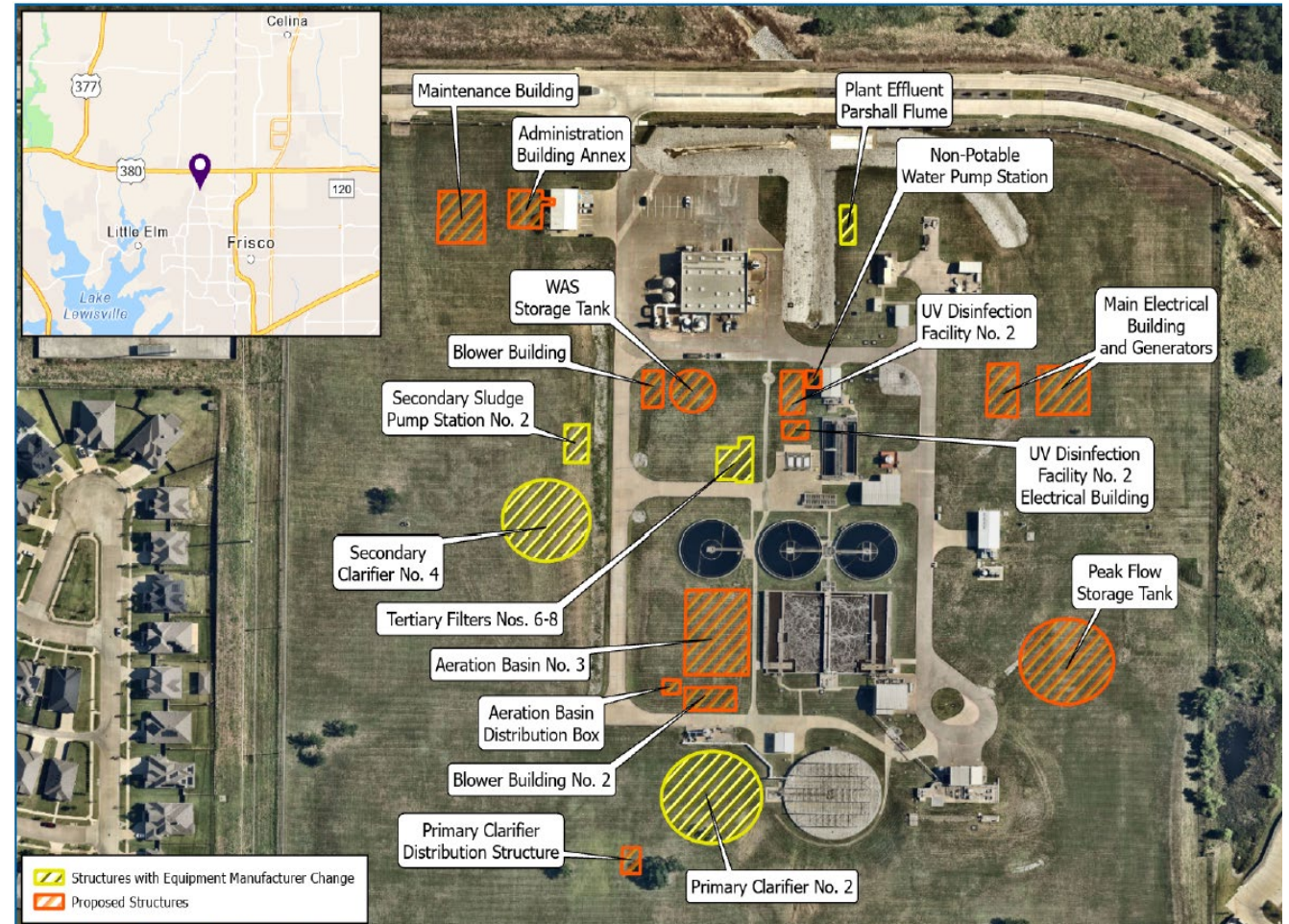
# Panther Creek WWTP Expansion to 15 MGD, CO No. 1

## Project Purpose

- Expand the treatment capacity of the Panther Creek WWTP from the current 10 MGD average daily flow to 15 MGD average daily flow with a peak two-hour flow of 45 MGD.

## Project Components

- Construction of a 5 MGD treatment train including primary clarifier, aeration basin and blower building, secondary clarifier, tertiary filters, UV disinfection facility, peak flow storage tank, secondary sludge pump station, plant water pump station, Parshall flume and increase of solids treatment capacity.
- Associated electrical feed and distribution, and emergency generators.
- Expansion of Administration Building, new Maintenance Building.



## Panther Creek WWTP Expansion to 15 MGD, CO No. 1

### **Equipment Manufacturers Change – (\$575,000) credit**

- Change manufacturers associated with clarifiers, cloth media filters and aluminum covers.
- Contractor received a lower price from equipment manufacturers on bid day but were inadvertently not included in the bid price.

### **Deduct for zinc coating on Ductile Iron Pipe – (\$117,157) credit**

- Change ductile iron pipe zinc coating per the contract documents to bituminous coated with V-bio polyethylene encasement.
- The contractor identified a cost savings for this substitute material. Engineer is in agreement.



# Panther Creek WWTP Expansion to 15 MGD

## **Coordination with the City of Frisco, the engineer, and the contractor on the following proposed change orders for future consideration and credits**

- Removal of meter and vault from IPS force mains
- Deduct for concrete coatings
- Removal of Maintenance Building
- Removal of Administration Building Annex
- Removal of construction permits allowance
- Removal of instrumentation at Primary & Secondary Sludge Pump Stations
- Removal of sidewalk along Fields Parkway
- Potential change of location for excess soil disposal

## **Additional Cost**

- Support of duct bank not shown on contract drawings in conflict with construction of new facility (Parshall flume)





## Committee Consideration

The Executive Director, NTMWD staff and HDR Engineering, Inc. recommend the Board of Directors authorize a change order as follows:

Contractor: Crossland Heavy Contractors, Inc.

Scope: Change Order No. 1

Project: No. 307-0493-18, Panther Creek Wastewater Treatment Plant Expansion to 15 MGD

Amount: *(\$692,157) credit*

## IV. ACTION ITEMS

- A. Consider approval of Wastewater Committee meeting minutes – June 25, 2025
- B. Rowlett Creek Regional Wastewater Treatment Plant Administration Building, Project No. 301-0524-19; Tabulation of Bids and Award of Contract
- C. Rowlett Creek Regional Wastewater Treatment Plant Peak Flow Management Improvements, Phase II; Project No. 301-0471-17; Engineering Services Agreement, and Construction Management and Inspection Services
- D. Panther Creek Wastewater Treatment Plant Expansion to 15 MGD; Project No. 307-0493-18; Change Order No. 1
- E. **Sister Grove Regional Water Resource Recovery Facility Influent Junction Structure; Project No. 301-0674-25; Engineering Services Agreement**
- F. Wilson Creek Regional Wastewater Treatment Plant Primary Clarifiers, Ultraviolet Light and Centrifuge Improvements, Project No. 301-0606-22; Tabulation of Bids, Award of Contract
- G. South Mesquite Creek Regional Wastewater Treatment Plant Peak Flow Management and Expansion, Project No. 301-0525-18; Amendment No. 9, Partial GMP No. 7, Engineering Services During Construction, and Additional Construction Management, Inspection and Material Testing Services

## V. DISCUSSION ITEMS

- A. Buffalo Creek Parallel Interceptor, Phase II, Final Design and Engineering Services Agreement
- B. Wastewater systems overview and key performance indicator highlights
- C. Regulatory compliance update
- D. Opportunity for Committee members to provide feedback on Wastewater Committee meeting or request potential future agenda items



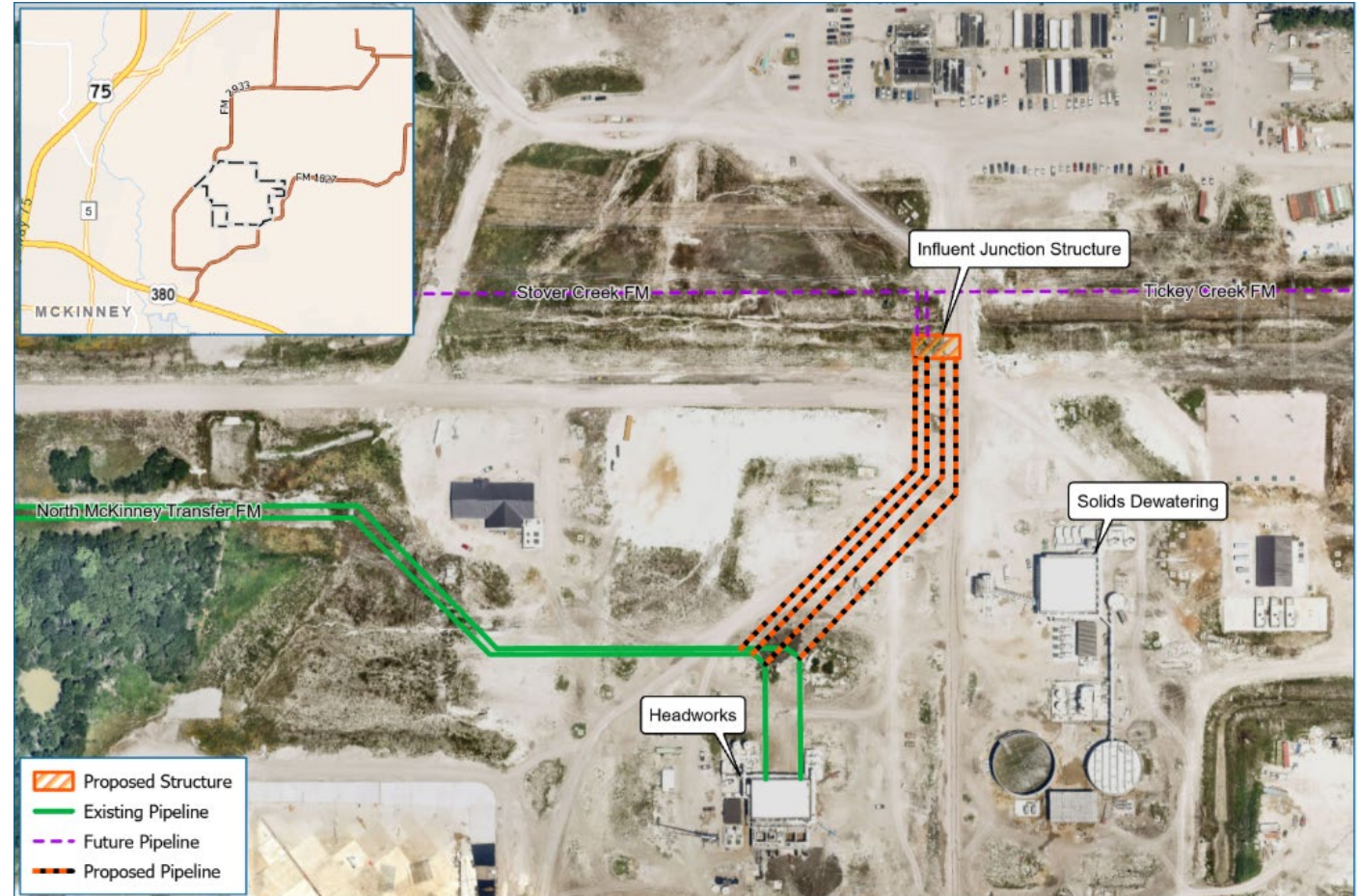
# Sister Grove Regional Water Resource Recovery Facility Influent Junction Structure

## Project Purpose

- New junction structure to reliably manage flow from multiple force mains into the Sister Grove Regional Water Resource Recovery Facility (RWRRF)

## Project Components

- Influent junction structure to handle incoming flows through the expansion to 32 MGD
- Yard piping modifications and stub outs for future force mains
- Isolation gates, electrical, instrumentation, and controls as needed



## Preliminary and Final Engineering (Ardurra)

- Basic Services - \$1,325,000
  - Alternatives assessment and recommendation
  - Project management and coordination
  - Preliminary and final design phase services
  - Bid phase services
- Special Services - \$145,000
  - Geotechnical engineering
  - Topographic survey
  - Physical modeling
- Total Requested Amount - \$1,470,000



## Committee Consideration

The Executive Director and NTMWD staff recommend the Board of Directors authorize the Executive Director to execute an engineering services agreement as follows:

Consultant:     Ardurra Group, Inc.

Scope:           Preliminary and Final Engineering Design

Project:           No. 301-0674-25, Sister Grove Regional Water Resource Recovery  
Facility Influent Junction Structure

Amount:           \$1,470,000

Funding:           Regional Wastewater System Extendable Commercial Paper Program

## IV. ACTION ITEMS

- A. Consider approval of Wastewater Committee meeting minutes – June 25, 2025
- B. Rowlett Creek Regional Wastewater Treatment Plant Administration Building, Project No. 301-0524-19; Tabulation of Bids and Award of Contract
- C. Rowlett Creek Regional Wastewater Treatment Plant Peak Flow Management Improvements, Phase II; Project No. 301-0471-17; Engineering Services Agreement, and Construction Management and Inspection Services
- D. Panther Creek Wastewater Treatment Plant Expansion to 15 MGD; Project No. 307-0493-18; Change Order No. 1
- E. Sister Grove Regional Water Resource Recovery Facility Influent Junction Structure; Project No. 301-0674-25; Engineering Services Agreement
- F. Wilson Creek Regional Wastewater Treatment Plant Primary Clarifiers, Ultraviolet Light and Centrifuge Improvements, Project No. 301-0606-22; Tabulation of Bids, Award of Contract**
- G. South Mesquite Creek Regional Wastewater Treatment Plant Peak Flow Management and Expansion, Project No. 301-0525-18; Amendment No. 9, Partial GMP No. 7, Engineering Services During Construction, and Additional Construction Management, Inspection and Material Testing Services

## V. DISCUSSION ITEMS

- A. Buffalo Creek Parallel Interceptor, Phase II, Final Design and Engineering Services Agreement
- B. Wastewater systems overview and key performance indicator highlights
- C. Regulatory compliance update
- D. Opportunity for Committee members to provide feedback on Wastewater Committee meeting or request potential future agenda items



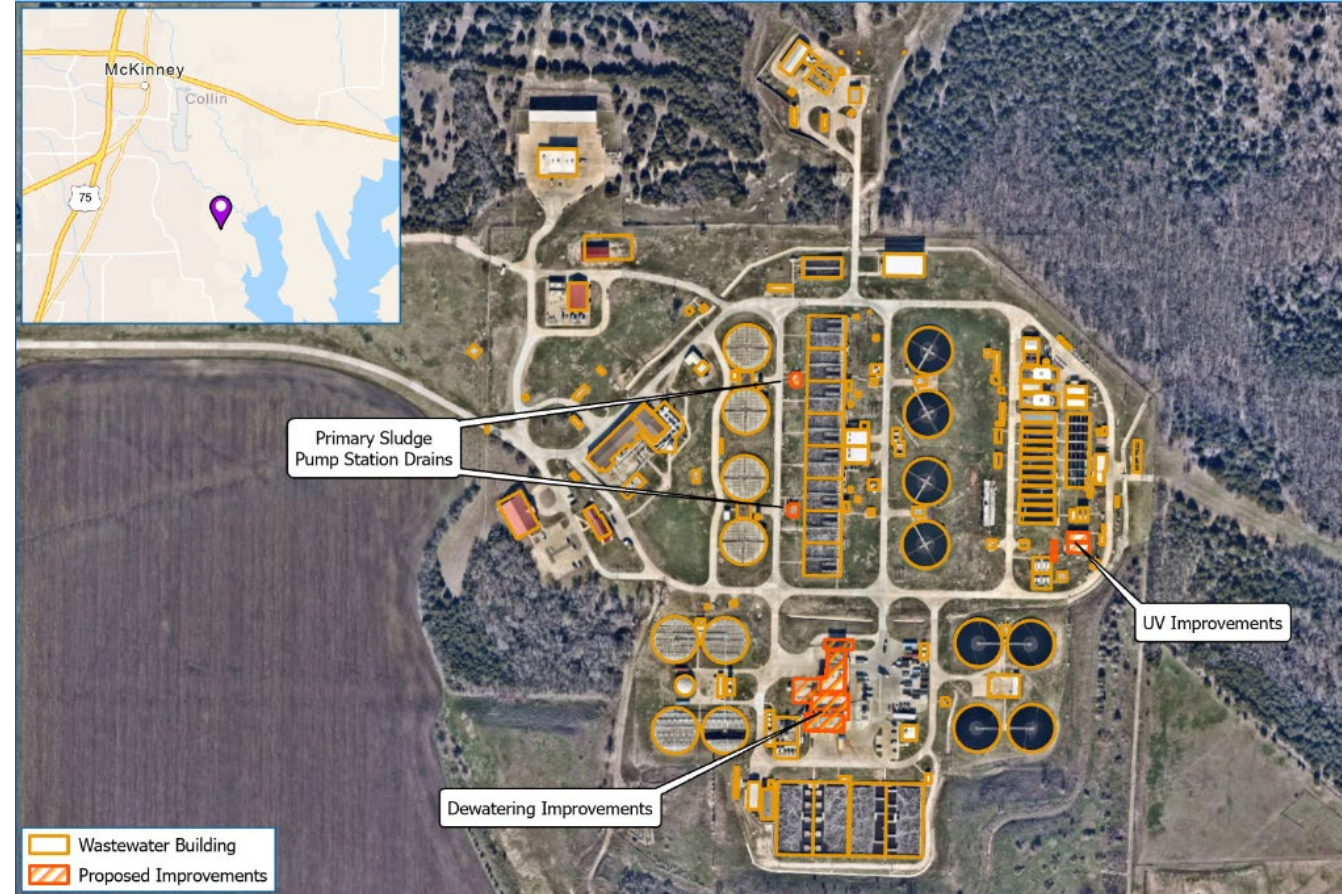
# Wilson Creek Regional Wastewater Treatment Plant Primary Clarifiers, Ultraviolet Light and Centrifuge Improvements

## Project Purpose

- The preliminary design evaluated the recommended improvements and determined additional dewatering centrifuge and UV improvements as high priority improvements to be constructed first.
- The Wilson Creek RWWTP Primary Clarifier, UV, and Centrifuge Improvements project will be split into two projects, and the high priority improvements will be completed first.

## Project Components

- Improvements to the UV disinfection facility and canopy improvements for the UV system
- Addition of one new centrifuge and ancillary support systems such as feed pump, sludge grinder, polymer system, and mixing system for bulk polymer storage tanks
- Replacement of drains from the primary sludge pump station nos. 1 and 2 to the plant drain manholes
- Electrical and supervisory control and data acquisition (SCADA) improvements for scoped facilities







# Wilson Creek Regional Wastewater Treatment Plant Primary Clarifiers, Ultraviolet Light and Centrifuge Improvements

Bidder	Total Bid	Recommendation
Urban Infraconstruction	\$11,995,000	Lowest Responsible Bidder Recommended for Award
Felix Construction	\$13,359,000	
Zachry Corporation	\$14,128,034	
Engineer's OPCC	\$15,072,626	

## Engineering Services During Construction & Inspection Services

- Engineering services during construction and inspection services to support the construction are currently being negotiated and will be recommended to the board for consideration in October 2025
- Construction support services will be on a planned 24-month construction duration
- Anticipate combination of outsourced electrical and SCADA inspection and internal civil inspection



## Committee Consideration

The Executive Director and NTMWD staff recommend the Board of Directors authorize the award of a contract as follows:

Contractor: Urban Infraconstruction, LLC

Consultant: Brown and Caldwell, Inc.

Scope: Construction Contract

Project: No. 301-0606-22; Wilson Creek RWWTP Primary Clarifiers, Ultraviolet Light and Centrifuge Improvements.

Amount: Construction Contract: \$11,995,000

Funding: Regional Wastewater System Extendable Commercial Paper Program

## IV. ACTION ITEMS

- A. Consider approval of Wastewater Committee meeting minutes – June 25, 2025
- B. Rowlett Creek Regional Wastewater Treatment Plant Administration Building, Project No. 301-0524-19; Tabulation of Bids and Award of Contract
- C. Rowlett Creek Regional Wastewater Treatment Plant Peak Flow Management Improvements, Phase II; Project No. 301-0471-17; Engineering Services Agreement, and Construction Management and Inspection Services
- D. Panther Creek Wastewater Treatment Plant Expansion to 15 MGD; Project No. 307-0493-18; Change Order No. 1
- E. Sister Grove Regional Water Resource Recovery Facility Influent Junction Structure; Project No. 301-0674-25; Engineering Services Agreement
- F. Wilson Creek Regional Wastewater Treatment Plant Primary Clarifiers, Ultraviolet Light and Centrifuge Improvements, Project No. 301-0606-22; Tabulation of Bids, Award of Contract
- G. South Mesquite Creek Regional Wastewater Treatment Plant Peak Flow Management and Expansion, Project No. 301-0525-18; Amendment No. 9, Partial GMP No. 7, Engineering Services During Construction, and Additional Construction Management, Inspection and Material Testing Services

## V. DISCUSSION ITEMS

- A. Buffalo Creek Parallel Interceptor, Phase II, Final Design and Engineering Services Agreement
- B. Wastewater systems overview and key performance indicator highlights
- C. Regulatory compliance update
- D. Opportunity for Committee members to provide feedback on Wastewater Committee meeting or request potential future agenda items



# South Mesquite Creek Regional Wastewater Treatment Plant Peak Flow Management and Expansion and Buffalo Creek Parallel Force Main

## Project Purpose

- Capacity Assessment Study of the southern services area show the South Mesquite Creek RWWTP needs expansion by 2028
  - From 33 MGD to 41 MGD average daily flow
  - Increase wet weather treatment capacity to 102.5 MGD
  - Meets growth projections through 2033
- Early peak flow relief adding 3.5 million gallons of storage was completed in August 2024

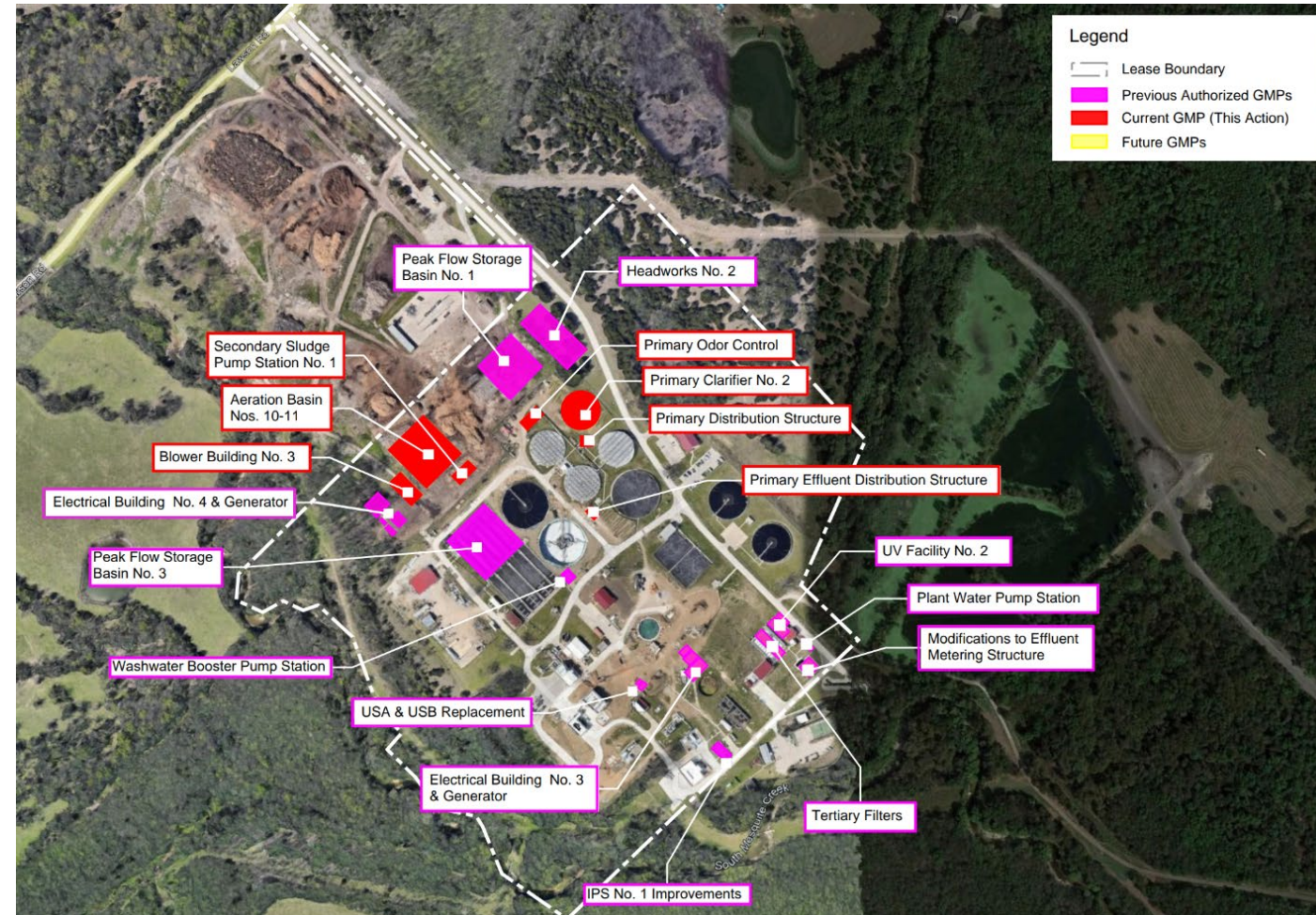


# South Mesquite Creek Regional Wastewater Treatment Plant Peak Flow Management and Expansion and Buffalo Creek Parallel Force Main

## Program Components

The program is divided into three parts:

- I. Early Peak Flow Relief
  - Repurposed abandoned secondary clarifier as Peak Flow Storage Basin No. 3
- II. Peak Flow Improvements
  - Headworks No. 2
  - Peak Flow Storage Basin No. 1
  - Buffalo Creek Parallel Force Main
  - Electrical Buildings and Gear for Peak Flow and Expansion
- III. **Expansion to 41 MGD**
  - **Primary, secondary and tertiary treatment improvements (Current Request)**







# South Mesquite Creek Regional Wastewater Treatment Plant Peak Flow Management and Expansion and Buffalo Creek Parallel Force Main

## South Mesquite Creek Regional Wastewater Treatment Plant Peak Flow Management and Expansion, 301-0525-18; Partial Guaranteed Maximum Price (GMP) No. 7

Major Scope of Work Description – Partial GMP No. 7	Lump Sum Amount
Bid Package 12 – Received 3 bid package proposals	\$86,417,007.00
<b>Total Construction Cost</b>	<b>\$86,417,007.00</b>
General Conditions (@8.5% of the Estimated Construction Costs)	\$7,345,446.00
Total Cost of Work	\$93,762,453.00
CMAR Fees (@6.5% of the Cost of Work)	\$6,094,560.00
CMAR Contingency (@1.5% of the Cost of Work)	\$0.00
<b>Partial Guaranteed Maximum Price No. 7 (Sum of Total Cost of Work and CMAR Fees)</b>	<b>\$99,857,013.00</b>



# South Mesquite Creek Regional Wastewater Treatment Plant Peak Flow Management and Expansion and Buffalo Creek Parallel Force Main

CMAR Contract Amendment Summary		
South Mesquite Creek Regional Wastewater Treatment Plant and Buffalo Creek Parallel Force Main		
Description	Status	Amount
Original Agreement - Partial Pre-Construction and Procurement Services Fee	Board Approved	\$1,250,000.00
Amendment No. 1 – Partial GMP No. 1 Materials & Site Prep.	Board Approved	\$11,944,463.24
Amendment No. 2 – Partial GMP No. 2 Early Peak Flow Relief	Board Approved	\$8,556,427.36
Change Order No. 1 – Reinforced concrete pipe encasement	Board Approved	\$48,117.51
Amendment No. 3 – Partial GMP No. 3 Electrical Procurement	Board Approved	\$16,788,604.77
Amendment No. 4 – Partial GMP No. 4 Headworks & Peak Flow Basin	Board Approved	\$110,349,109.09
Amendment No. 5 – (CO No. 2) Reduction of GMP 1&2 now complete	Board Approved	(\$1,553,954.45)
Amendment No. 6 – BCPFM CMAR Services and Partial GMP No. 5 for Electrical Building No. 3 and Non-potable water pumps procurement	Board Approved	\$21,370,610.27
Amendment No. 7 – Partial GMP No. 6 Expansion to 41 MGD Components: UV, 42-inch force mains, filters, non-potable water, solids improvements, Maintenance and Storage Facility	Board Approved	\$49,650,787.00
Amendment No. 8 – BCPFM Partial GMP No. 1 Valve Procurement	Board Approved	\$936,308.00
<b>Amendment No. 9 – Partial GMP No. 7 Primary and Secondary Treatment</b>	<b>Current Request</b>	<b>\$99,857,013.00</b>
<b>Total Contract Price</b>		<b>\$319,197,485.79</b>





# South Mesquite Creek Regional Wastewater Treatment Plant Peak Flow Management and Expansion and Buffalo Creek Parallel Force Main

- Engineering Services Agreement (ESA)
  - The ESA with Carollo Engineers, Inc. is for engineering services during construction for work related to Partial GMP No. 7 for the South Mesquite RWWTP Peak Flow Management and Expansion.
  - Estimated 600 submittals and 250 RFIs.
  - Recommended Amount for Authorization \$2,035,500.
- Additional Construction Management, Inspection and Material Testing
  - Additional services with AECOM Technical Services, Inc. for construction management, inspection and material testing services for work related to Fiscal Year (FY) 26.
  - Additional funds will be requested for FY27 and FY28.
  - Recommended Amount for Authorization: \$2,612,589.



## Committee Consideration

The Executive Director and NTMWD staff recommend the Board of Directors authorize the Executive Director to execute Amendment No. 9 to the Construction Manager At-Risk, Engineering Services Agreement, and authorize the award of contract as follows:

CMAR:	Archer Western Construction, LLC
Consultant:	Carollo Engineers, Inc.
Construction Manager:	AECOM Technical Services, Inc.
Scope:	Construction, Partial GMP No. 7; Engineering Services During Construction for GMP No. 7; Additional Construction Management, Inspection Services, and Construction Material Testing
Project:	No. 301-0525-18, South Mesquite Creek Regional Wastewater Treatment Plant Peak Flow Management and Expansion
Amount:	\$99,857,013 to Archer Western Construction, LLC \$2,035,500 to Carollo Engineers, Inc. \$2,612,589 to AECOM Technical Services, Inc.
Funding:	Regional Wastewater System Extendable Commercial Paper Program

## IV. ACTION ITEMS

- A. Consider approval of Wastewater Committee meeting minutes – June 25, 2025
- B. Rowlett Creek Regional Wastewater Treatment Plant Administration Building, Project No. 301-0524-19; Tabulation of Bids and Award of Contract
- C. Rowlett Creek Regional Wastewater Treatment Plant Peak Flow Management Improvements, Phase II; Project No. 301-0471-17; Engineering Services Agreement, and Construction Management and Inspection Services
- D. Panther Creek Wastewater Treatment Plant Expansion to 15 MGD; Project No. 307-0493-18; Change Order No. 1
- E. Sister Grove Regional Water Resource Recovery Facility Influent Junction Structure; Project No. 301-0674-25; Engineering Services Agreement
- F. Wilson Creek Regional Wastewater Treatment Plant Primary Clarifiers, Ultraviolet Light and Centrifuge Improvements, Project No. 301-0606-22; Tabulation of Bids, Award of Contract
- G. South Mesquite Creek Regional Wastewater Treatment Plant Peak Flow Management and Expansion, Project No. 301-0525-18; Amendment No. 9, Partial GMP No. 7, Engineering Services During Construction, and Additional Construction Management, Inspection and Material Testing Services

## V. DISCUSSION ITEMS

- A. Buffalo Creek Parallel Interceptor, Phase II, Final Design and Engineering Services Agreement
- B. Wastewater systems overview and key performance indicator highlights
- C. Regulatory compliance update
- D. Opportunity for Committee members to provide feedback on Wastewater Committee meeting or request potential future agenda items



# Buffalo Creek Parallel Interceptor, Phase II, Engineering Services Agreement, Final Engineering

## Project Purpose

- 2021 Buffalo Creek Interceptor System Capacity Assessment and Assurance report recommends improvements to meet flow projections due to population growth in the cities of Forney, Heath, and Rockwall.
  - A new parallel interceptor to increase conveyance capacity, reduce existing surcharges, and provide redundancy and resiliency.
  - In Phase 1, a parallel interceptor extended from the Buffalo Creek Wastewater Treatment Plant (WWTP) to just north of F.M. 740 and is in-service.
  - Phase 2 continues the parallel interceptor from north of F.M. 740 to Buffalo Creek Lift Station.
- Completion of this project is needed to decommission the Buffalo Creek WWTP.



# Buffalo Creek Parallel Interceptor, Phase II, Engineering Services Agreement, Final Engineering

## Project Components

- 32,000 linear feet of 60-inch parallel interceptor including odor control canisters.
- One permanent billing flow meter parallel to the existing Heath 740 Meter Station
- Manhole rehabilitation of approximately 83 manholes on the existing Buffalo Creek Interceptor
- Access improvements across existing drainages to facilitate maintenance along the interceptor system







# Buffalo Creek Parallel Interceptor, Phase II, Engineering Services Agreement, Final Engineering

## BASIC SERVICES

- Project management, coordination, and design review workshop
- Final engineering design services
- Bid phase services

## SPECIAL SERVICES

- Permitting and stakeholder coordination
- Geotechnical engineering
- Subsurface utility engineering
- Environmental services

Total Budget Amount: \$3,280,000  
Final fee amount under negotiation

## IV. ACTION ITEMS

- A. Consider approval of Wastewater Committee meeting minutes – June 25, 2025
- B. Rowlett Creek Regional Wastewater Treatment Plant Administration Building, Project No. 301-0524-19; Tabulation of Bids and Award of Contract
- C. Rowlett Creek Regional Wastewater Treatment Plant Peak Flow Management Improvements, Phase II; Project No. 301-0471-17; Engineering Services Agreement, and Construction Management and Inspection Services
- D. Panther Creek Wastewater Treatment Plant Expansion to 15 MGD; Project No. 307-0493-18; Change Order No. 1
- E. Sister Grove Regional Water Resource Recovery Facility Influent Junction Structure; Project No. 301-0674-25; Engineering Services Agreement
- F. Wilson Creek Regional Wastewater Treatment Plant Primary Clarifiers, Ultraviolet Light and Centrifuge Improvements, Project No. 301-0606-22; Tabulation of Bids, Award of Contract
- G. South Mesquite Creek Regional Wastewater Treatment Plant Peak Flow Management and Expansion, Project No. 301-0525-18; Amendment No. 9, Partial GMP No. 7, Engineering Services During Construction, and Additional Construction Management, Inspection and Material Testing Services

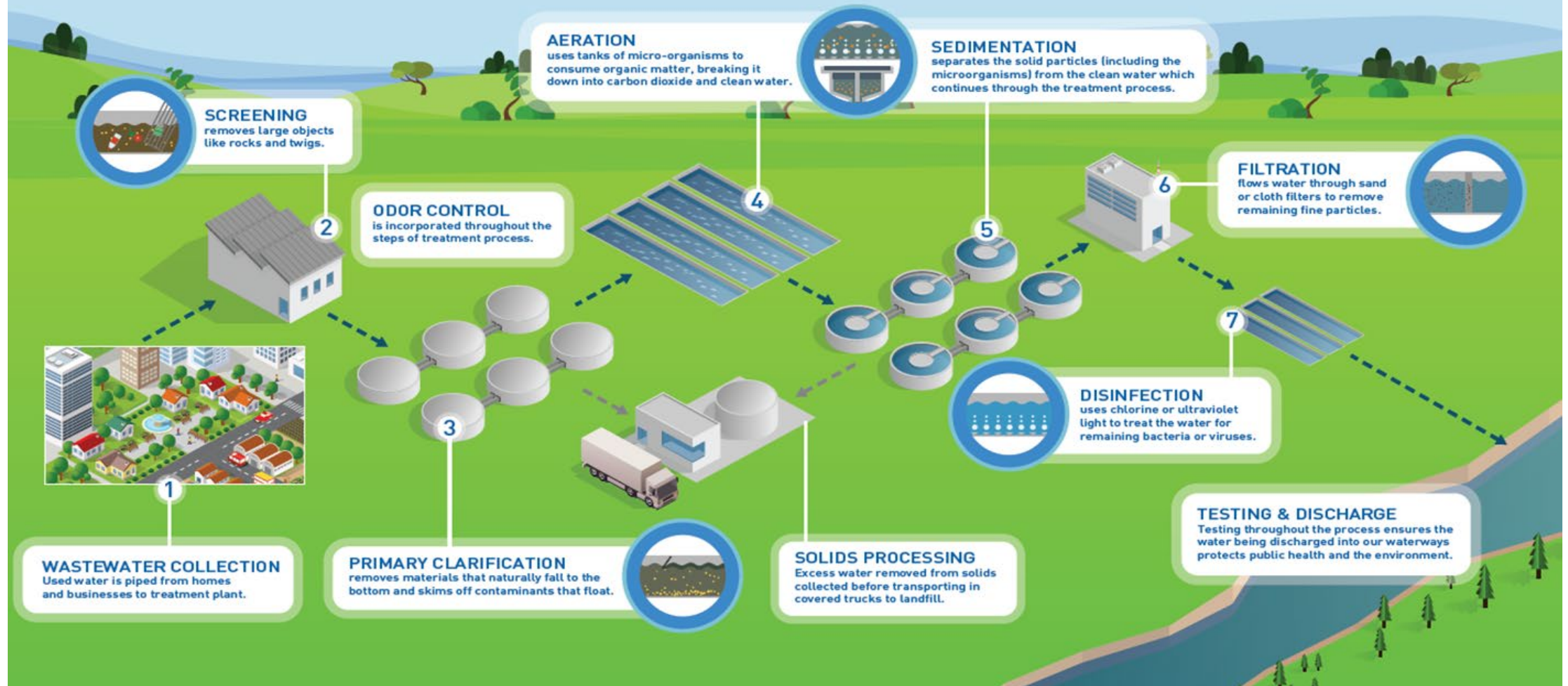
## V. DISCUSSION ITEMS

- A. Buffalo Creek Parallel Interceptor, Phase II, Final Design and Engineering Services Agreement
- B. **Wastewater systems overview and key performance indicator highlights**
- C. Regulatory compliance update
- D. Opportunity for Committee members to provide feedback on Wastewater Committee meeting or request potential future agenda items

# Wastewater System Overview



## 7 Steps to Clean Water





# Wastewater System At a Glance

## Communities Served

- 22 Member and Customer Communities
- Approximately 1.6 million North Texas residents
- 50 Billion Gallons of Annual Wastewater Flow

## Regional Wastewater System

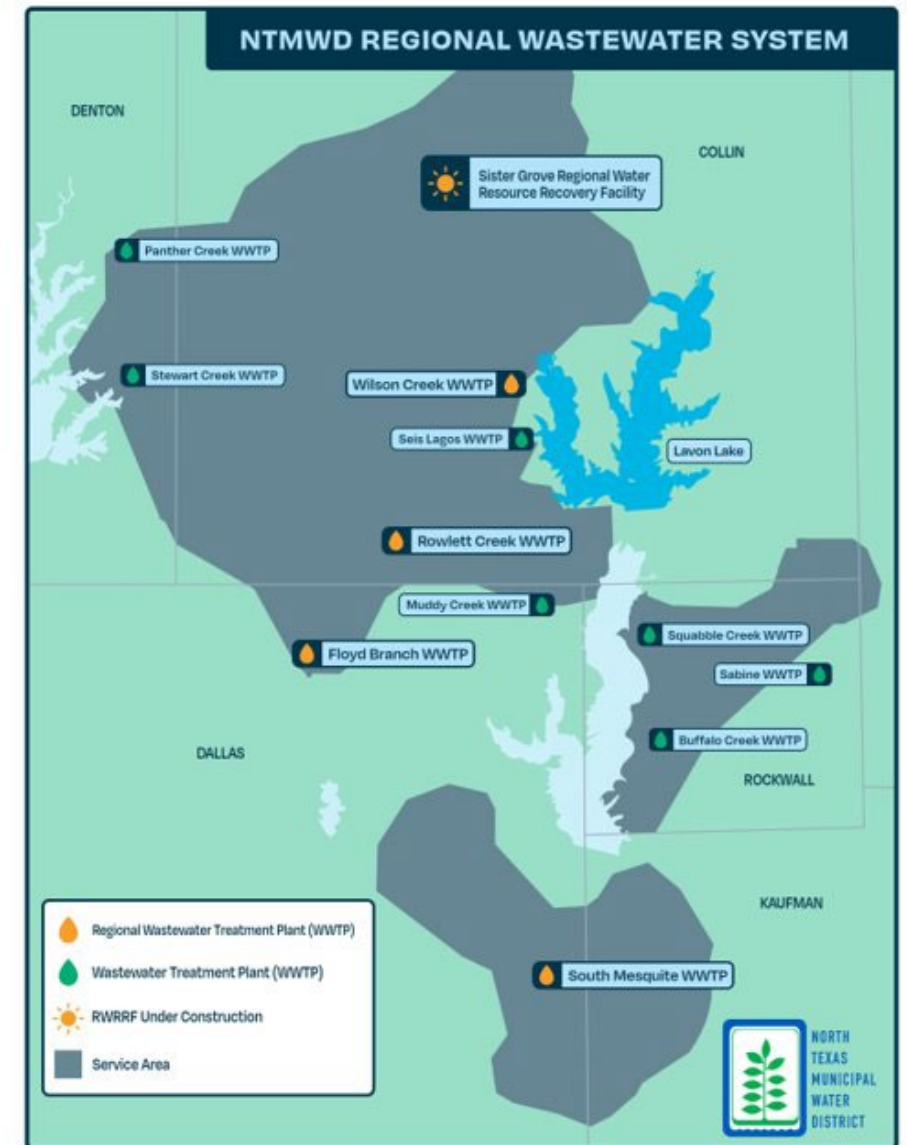
- Wilson Creek RWWTP 64.00 MGD
- South Mesquite RWWTP 33.00 MGD
- Rowlett Creek RWWTP 24.00 MGD
- Sister Grove RWRRF 16.00 MGD
- Floyd Branch RWWTP 4.75 MGD
- TOTAL 141.75 MGD

## Sewer System Plants

- Six Sewer System Plants with 39.7 MGD Total Capacity
- Each plant has separate independent systems and contracts

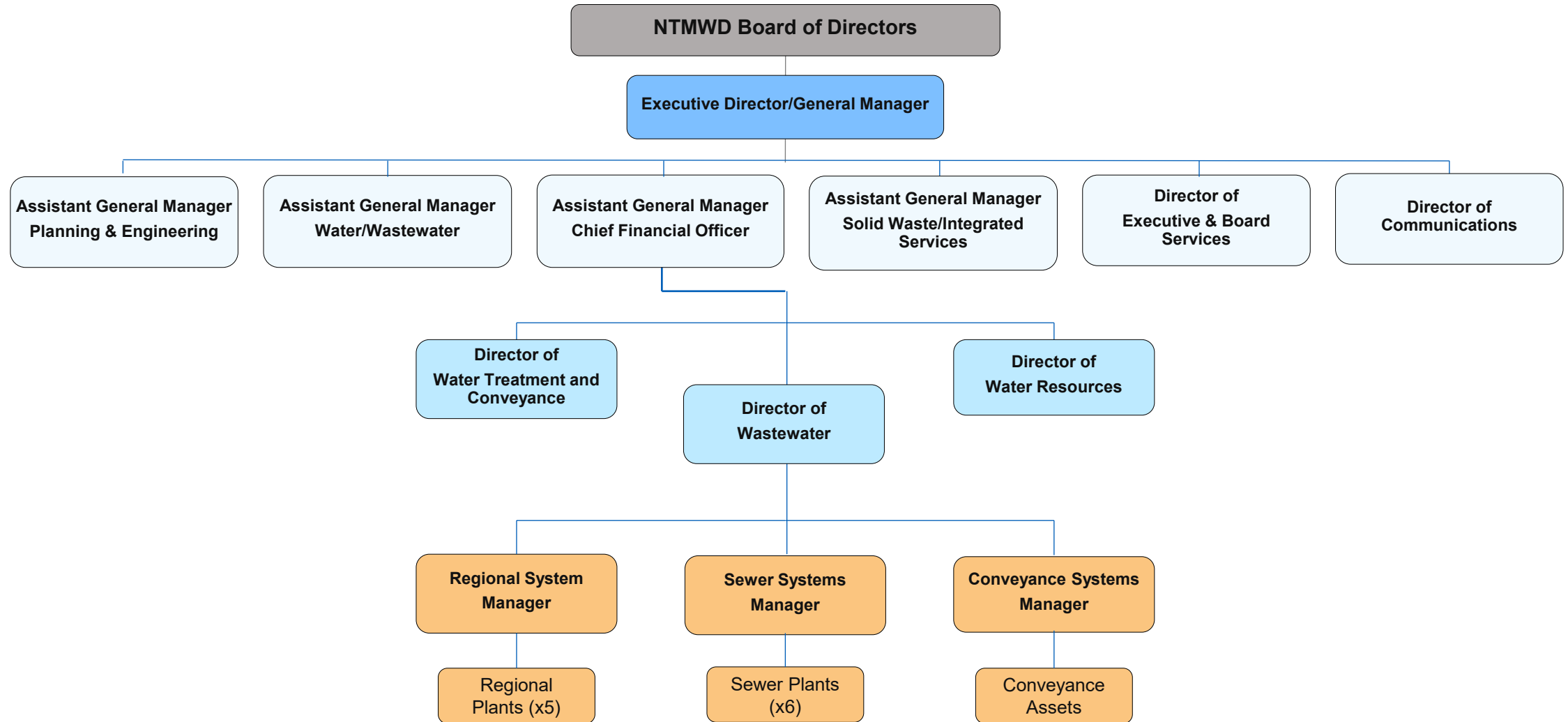
## Conveyance Systems

- Miles of large diameter pipe 242+
- Lift Stations – 25
- Odor Control Systems – 35+





# Wastewater Organization







# System Members and Customers

## Regional Wastewater System Members

- Share cost proportionally based on percentage of total flow contributed to system in fiscal year

## Regional Wastewater System Customers

- Billed for unit cost of flow sent to system. Budget rate 20% above member cost

## Sewer System Participants

- If one community contributes, that community pays full cost
- If multiple communities contribute, cost shared proportionally based on flow contributed

Regional WW Members	Regional WW Customers	Sewer System Participants
Allen	Anna	Fate
Forney	Fairview	Frisco
Frisco	Lucas	Murphy
Heath	Parker	Rockwall
McKinney		Royse City
Mesquite		Seis Lagos UD
Melissa		Wylie
Plano		
Princeton		
Prosper		
Richardson		
Rockwall		
Seagoville		



# Regional Wastewater System

Department (City Location)	Avg. Capacity	No. O&M Positions	FY 25 Budget	Communities Served
Wilson Creek WWTP (Allen, Fairview, Lucas)	64 mgd	65	\$29.5M	Allen, Anna, Fairview, Frisco, Lucas, McKinney, Melissa, Parker, Plano, Princeton, Prosper, Richardson
Rowlett Creek WWTP (East Plano)	24 mgd	30	\$19.5M	
Sister Grove RWRRF (New Hope)	16 mgd (under construction)	22	4.8M	
Floyd Branch WWTP (Richardson)	4.75 mgd	8	\$4.0M	Richardson
Mesquite WWTP (Mesquite)	33 mgd	41	\$17.6M	Forney, Heath, Mesquite, Rockwall, Seagoville
Debt Service			46.3M	
<b>TOTAL</b>		<b>166</b>	<b>\$121.7M</b>	



# Sewer System Plants

Wastewater Treatment Plant (City located)	Avg. Capacity	No. O&M Positions	FY25 Budget	Communities Served
Panther Creek WWTP (Frisco)	10 mgd (construction to 15 mgd)	16.5	\$15.7M	Frisco
Stewart Creek WWTP (Frisco)	10 mgd	17.5	\$12.6M	
Muddy Creek WWTP (Wylie)	10 mgd (construction to 12.5 mgd)	18	\$12.2M	Wylie, Murphy
Sabine Creek WWTP (near Royse City)	7 mgd	14	\$8.2M	Royse City, Fate
Buffalo Creek WWTP (Rockwall)	2.25 mgd		\$2.1M	Rockwall
Seis Lagos WWTP (Wylie)	0.25 mgd		\$473k	Seis Lagos
<b>TOTAL</b>		<b>66</b>	<b>\$51.3M</b>	

- ✓ Farmersville contract terminated 10/2024
- ✓ Bear Creek (Lavon) contract terminated 10/2025
- ✓ Squabble Creek regionalization offline 9/1/2025

Upcoming change:  
Buffalo Creek regionalization decommission ~2030

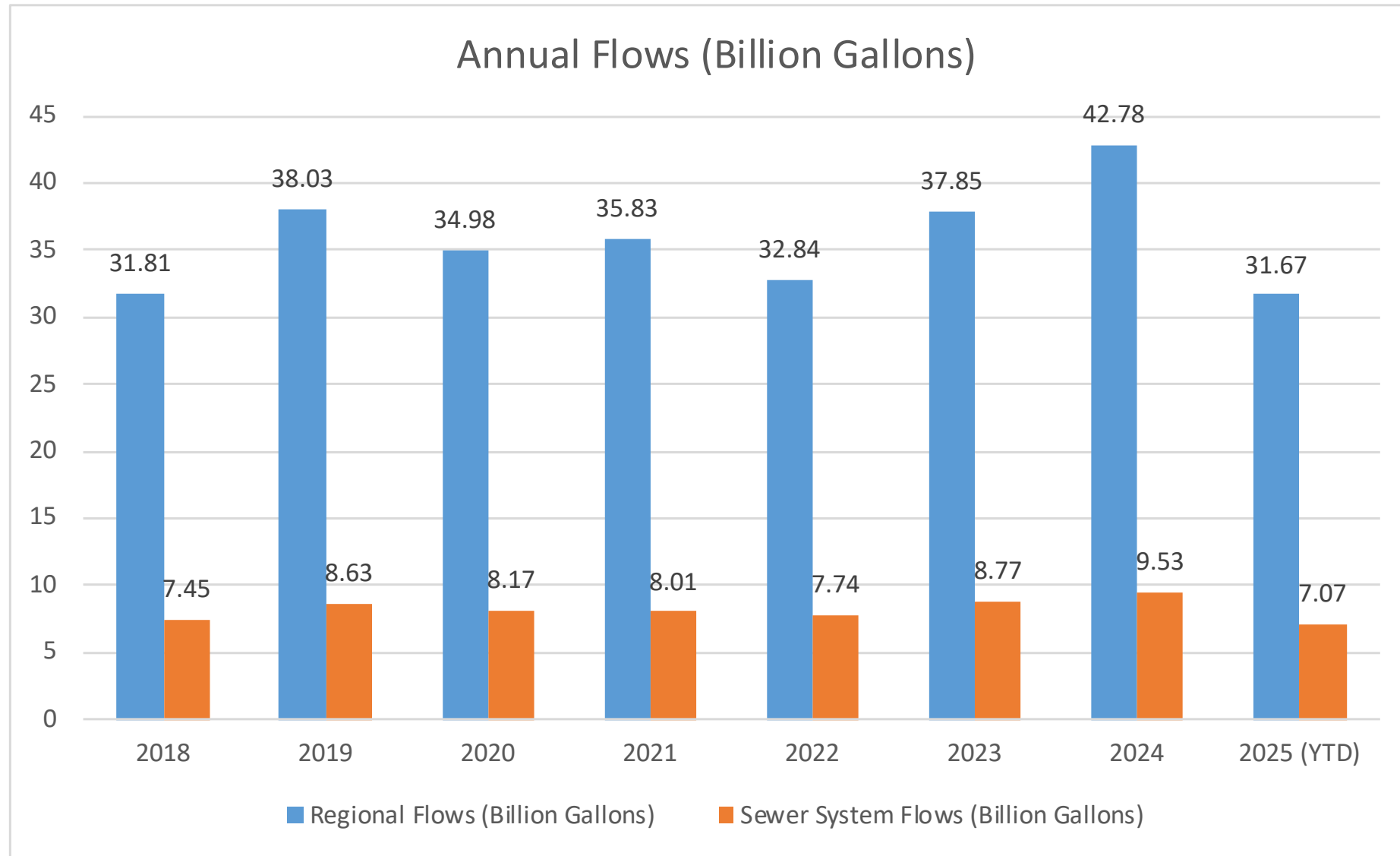


# Wastewater Conveyance System Overview

Department	No. O&M Positions	FY25 Budget	Communities Served
Upper East Fork Interceptor System (UEFIS)	25 Interceptor System Lift Stations Odor Control	\$65.4M	Allen, Anna, Fairview, Frisco, Lucas, McKinney, Melissa, Parker, Plano, Princeton, Prosper, Richardson
Buffalo Creek Interceptor		\$7.1M	Forney, Heath, Rockwall
Mustang Creek Interceptor		\$3.7M	Forney
Lower East Fork Interceptor		\$2.6M	Mesquite, Seagoville
Forney Interceptor		\$765k	Forney
Parker Creek Interceptor		\$404k	Fate, Royse City
Parker Creek Parallel Interceptor		\$260k	Fate
Muddy Creek Interceptor		\$158k	Murphy, Wylie
Sabine Creek Interceptor		\$67k	Royse City
McKinney Interceptor		\$50k	McKinney
<b>TOTAL</b>		<b>\$80.5M</b>	



# Annual Wastewater Flows





## Plant Permit and Environmental Compliance

- Water Quality Report
- Flow Report by Systems
- Plant Capacity Report
- Sanitary Sewer Overflow (SSO) Rate
- Odor Control Tracking



# Key Performance Indicator Layout

- One-page format for each facility
- Table identifies quarterly compliance
- Charted data for primary effluent characteristics

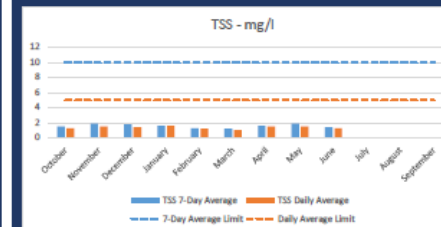


NORTH TEXAS  
MUNICIPAL  
WATER  
DISTRICT

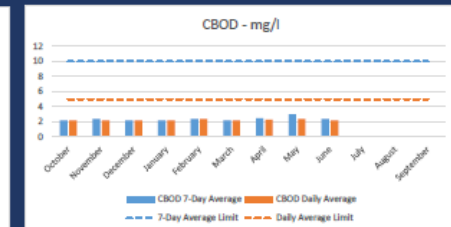
NTMWD - WASTEWATER

NPDES - TCEQ Permit Requirements/ Achievement

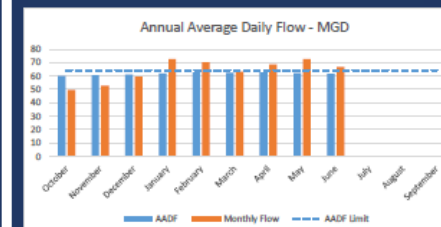
Effluent Characteristics	Frequency	Units	Limits	April	May	June	3rd Quarter Violations	YTD Violations
CBOD5	Daily Average	mg/l	5	<2.3	<2.4	<2.2	0	0
The min detection limit for CBOD5=2.2	7-Day Average	mg/l	10	<2.5	<3	<2.4	0	0
	Daily Max	mg/l	20	<3.3	<6.7	<3.3	0	0
	Single Grab	mg/l	30	-	-	-	0	0
TSS	Daily Average	mg/l	5	1.5	1.5	1.3	0	0
	7-Day Average	mg/l	10	1.6	1.9	1.4	0	0
	Daily Max	mg/l	20	2.2	3.2	1.9	0	0
	Single Grab	mg/l	30	-	-	-	0	0
Ammonia Nitrogen	Daily Average	mg/l	2	<0.2	<0.4	<0.2	0	0
	7-Day Average	mg/l	5	0.2	0.6	0.3	0	0
	Daily Max	mg/l	10	0.8	1.5	1.1	0	0
	Single Grab	mg/l	15	-	-	-	0	0
Total Phosphorus	Daily Average	mg/l	0.5	0.2	0.2	0.2	0	0
	7-Day Average	mg/l	1	0.3	0.3	0.2	0	0
	Daily Max	mg/l	2	0.8	0.5	0.4	0	0
	Single Grab	mg/l	3	-	-	-	0	0
E.coli	Daily Average	col/100mL	126	<2	<2	<3	0	0
Daily Avg = Geomean	Daily Max	col/100mL	399	3.7	132.4	107.8	0	1
pH	Monthly Range	SU	6 to 9	6.4/7.0	6.8/8.0	6.0/7.7	0	0
DO	Monthly Min	mg/l	>5	8.4	7.8	7.9	0	0



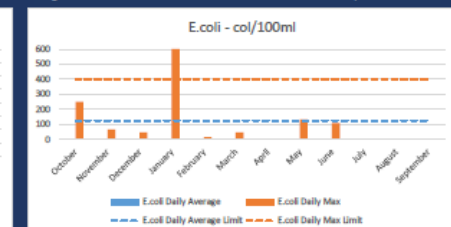
Total Suspended Solids (TSS) in the effluent is a measure of the amount of solids that remain suspended after treatment. All TSS measurements for the 3rd Quarter were within permit limits.



Carbonaceous Biochemical Oxygen Demand (CBOD) is a measure of the amount of dissolved oxygen required for the decomposition of organic materials in the environment. The minimum detection limit for CBOD is 2.2 mg/L. All CBOD measurements for the 3rd Quarter were within permit limits.



Annual average daily flow of the WWTP in MGD, defined as the arithmetic average of all daily flow determinations taken within the preceding 12 consecutive calendar months, and shall not exceed 64 MGD. All AADF measurements for the 3rd Quarter were within permit limits.



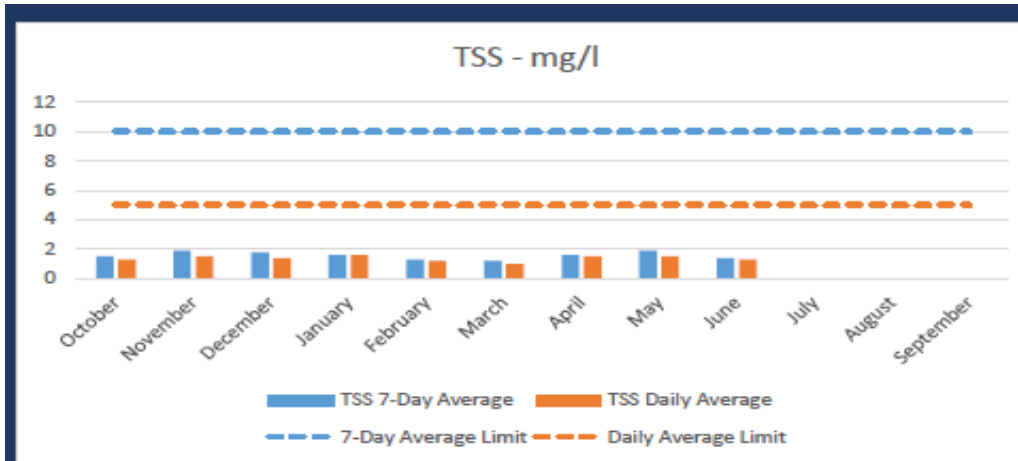
Fecal Coliform is an indicator for the possible presence of pathogens. The levels of these bacteria after disinfection show how effectively the plant is inactivating many forms of disease-causing microorganisms. 2 E.coli measurements for the 3rd Quarter violated permit limits.



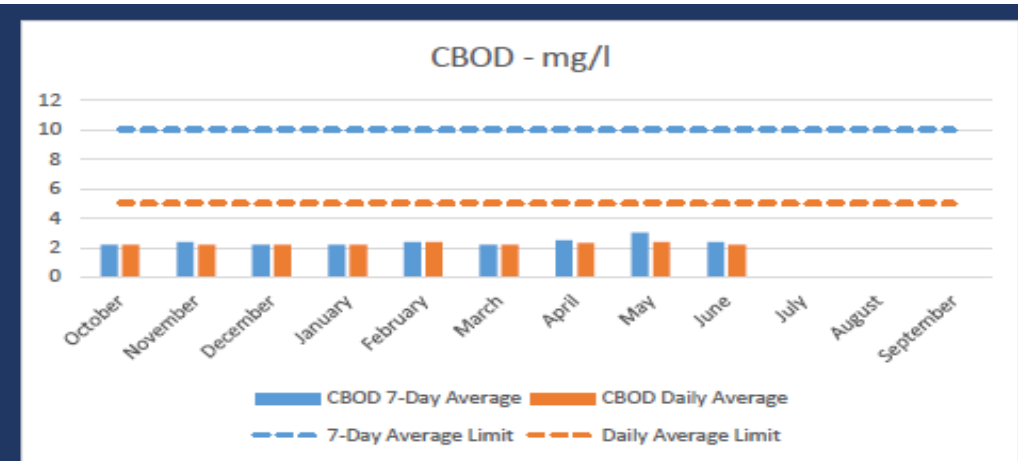
# Fiscal Year 2025 Key Performance Indicator Highlights

Wilson Creek Regional WWTP - NPDES								
Effluent Characteristics	Frequency	Units	Limits		April	May	June	3rd Quarter Violations
CBOD5	Daily Average	mg/l	5		<2.3	<2.4	<2.2	0
The min detection	7-Day Average	mg/l	10		<2.5	<3	<2.4	0
limit for CBOD5=2.2	Daily Max	mg/l	20		<3.3	<6.7	<3.3	0
	Single Grab	mg/l	30		-	-	-	0
TSS	Daily Average	mg/l	5		1.5	1.5	1.3	0
	7-Day Average	mg/l	10		1.6	1.9	1.4	0
	Daily Max	mg/l	20		2.2	3.2	1.9	0
	Single Grab	mg/l	30		-	-	-	0
Ammonia Nitrogen	Daily Average	mg/l	2		<0.2	<0.4	<0.2	0
	7-Day Average	mg/l	5		0.2	0.6	0.3	0
	Daily Max	mg/l	10		0.8	1.5	1.1	0
	Single Grab	mg/l	15		-	-	-	0
Total Phosphorus	Daily Average	mg/l	0.5		0.2	0.2	0.2	0
	7-Day Average	mg/l	1		0.3	0.3	0.2	0
	Daily Max	mg/l	2		0.8	0.5	0.4	0
	Single Grab	mg/l	3		-	-	-	0
E.coli	Daily Average	col/100mL	126		<2	<2	<3	0
Daily Avg = Geomean	Daily Max	col/100mL	399		3.7	132.4	107.8	0
pH	Monthly Range	SU	6 to 9		6.4/7.0	6.8/8.0	6.0/7.7	0
DO	Monthly Min	mg/l	>5		8.6	7.8	7.9	0

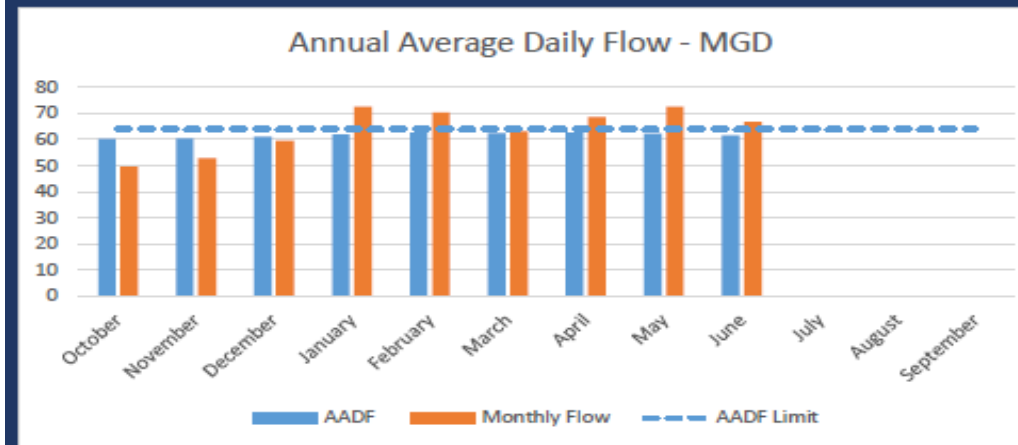
# Fiscal Year 2025 Key Performance Indicator Highlights



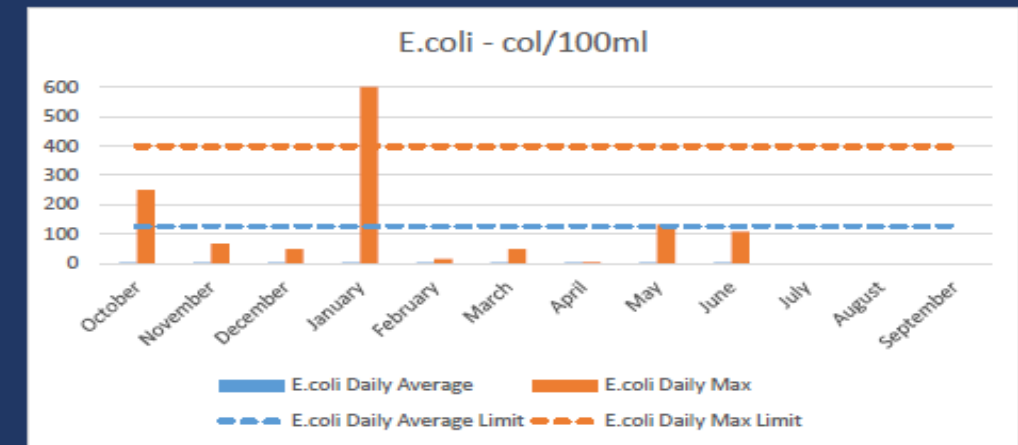
Total Suspended Solids (TSS) in the effluent is a measure of the amount of solids that remain suspended after treatment. All TSS measurements for the 3rd Quarter were within permit limits.



Carbonaceous Biochemical Oxygen Demand (CBOD) is a measure of the amount of dissolved oxygen required for the decomposition of organic materials in the environment. The minimum detection limit for CBOD is 2.2 mg/L. All CBOD measurements for the 3rd Quarter were within permit limits.




Annual average daily flow of the WWTP in MGD, defined as the arithmetic average of all daily flow determinations taken within the preceding 12 consecutive calendar months, and shall not exceed 64 MGD. All AADF measurements for the 3rd Quarter were within permit limits.



Fecal Coliform is an indicator for the possible presence of pathogens. The levels of these bacteria after disinfection show how effectively the plant is inactivating many forms of disease-causing microorganisms. 2 E.coli measurements for the 3rd Quarter violated permit limits.

# Regional System Flow Report

 NORTH TEXAS MUNICIPAL WATER DISTRICT		NTMWD WASTEWATER FLOW SUMMARY BY SYSTEM FISCAL YEAR 2025 (Flows are Reported in 1000 Gallons)												
	OCT	NOV	DEC	JAN	FEB	MAR	APR	MAY	JUN	JUL	AUG	SEP	FYTD	FYTD % Contribution
Regional Wastewater System Member Cities														
Member Cities														
Allen	148,303	163,894	198,761	256,949	210,244	197,050	215,239	236,630	206,588				1,833,657	5.95%
Forney	119,709	123,023	152,958	160,007	165,911	158,030	188,525	195,487	177,688				1,441,338	4.68%
Frisco	163,005	162,995	176,720	195,372	171,189	173,002	182,752	197,500	183,824				1,606,359	5.21%
Heath	63,180	70,241	90,721	100,658	104,624	105,097	90,848	103,988	108,680				838,036	2.72%
McKinney	525,526	527,851	586,838	670,565	603,728	579,793	642,619	718,090	610,940				5,465,951	17.74%
Melissa	60,028	66,227	74,752	82,840	75,358	97,474	89,296	90,612	73,079				709,667	2.30%
Mesquite	354,484	383,805	416,823	450,272	419,634	448,722	474,003	504,041	479,159				3,930,941	12.76%
Plano	771,417	805,745	922,229	1,094,844	958,660	869,495	936,388	1,025,986	962,473				8,347,236	27.09%
Princeton	59,448	64,276	77,463	102,304	82,519	88,371	95,864	106,068	100,306				776,620	2.52%
Prosper	50,895	52,947	58,357	63,286	57,609	59,885	67,257	75,245	64,469				549,951	1.78%
Richardson	354,564	358,765	423,616	482,553	439,188	448,885	423,603	462,961	433,430				3,827,566	12.42%
Rockwall	91,262	94,950	125,288	138,602	123,857	130,529	140,165	153,513	153,906				1,152,072	3.74%
Seagoville*	31,987	31,607	35,718	40,312	35,621	37,648	40,815	42,642	40,090				336,440	1.09%
Totals	2,793,808	2,906,326	3,340,242	3,838,564	3,448,143	3,393,982	3,587,374	3,912,765	3,594,632				30,815,835	100.00%
Upper East Fork Interceptor System (UEFIS) System Member Cities														
(UEFIS) System Member Cities														
Allen	148,303	163,894	198,761	256,949	210,244	197,050	215,239	236,630	206,588				1,833,657	8.24%
Frisco	163,005	162,995	176,720	195,372	171,189	173,002	182,752	197,500	183,824				1,606,359	7.22%
McKinney	525,526	527,851	586,838	670,565	603,728	579,793	642,619	718,090	610,940				5,465,951	24.56%
Melissa	60,028	66,227	74,752	82,840	75,358	97,474	89,296	90,612	73,079				709,667	3.19%
Plano	771,417	805,745	922,229	1,094,844	958,660	869,495	936,388	1,025,986	962,473				8,347,236	37.51%
Princeton	59,448	64,276	77,463	102,304	82,519	88,371	95,864	106,068	100,306				776,620	3.49%
Prosper	50,895	52,947	58,357	63,286	57,609	59,885	67,257	75,245	64,469				549,951	2.47%
Richardson	293,930	292,987	322,106	356,963	320,892	336,408	339,974	360,851	338,901				2,963,012	13.32%
Totals	2,072,553	2,136,922	2,417,225	2,823,123	2,480,200	2,401,480	2,569,388	2,810,982	2,540,580				22,252,453	100.00%
Regional Wastewater System and (UEFIS) Customer Cities														
(UEFIS) Customer Cities														
Anna	48,530	53,188	54,454	74,985	82,268	57,511	76,701	84,307	86,365				618,308	
Fairview	15,203	17,425	16,807	21,206	19,601	13,795	18,276	17,906	18,908				159,126	
Lucas	604	598	665	734	633	1,413	1,631	1,556	1,179				9,012	
Parker	3,447	4,858	5,551	9,019	8,781	6,425	8,612	8,360	8,219				63,271	
Totals	67,784	76,069	77,477	105,943	111,283	79,143	105,219	112,129	114,670				849,717	



# Wastewater Treatment Capacity Report

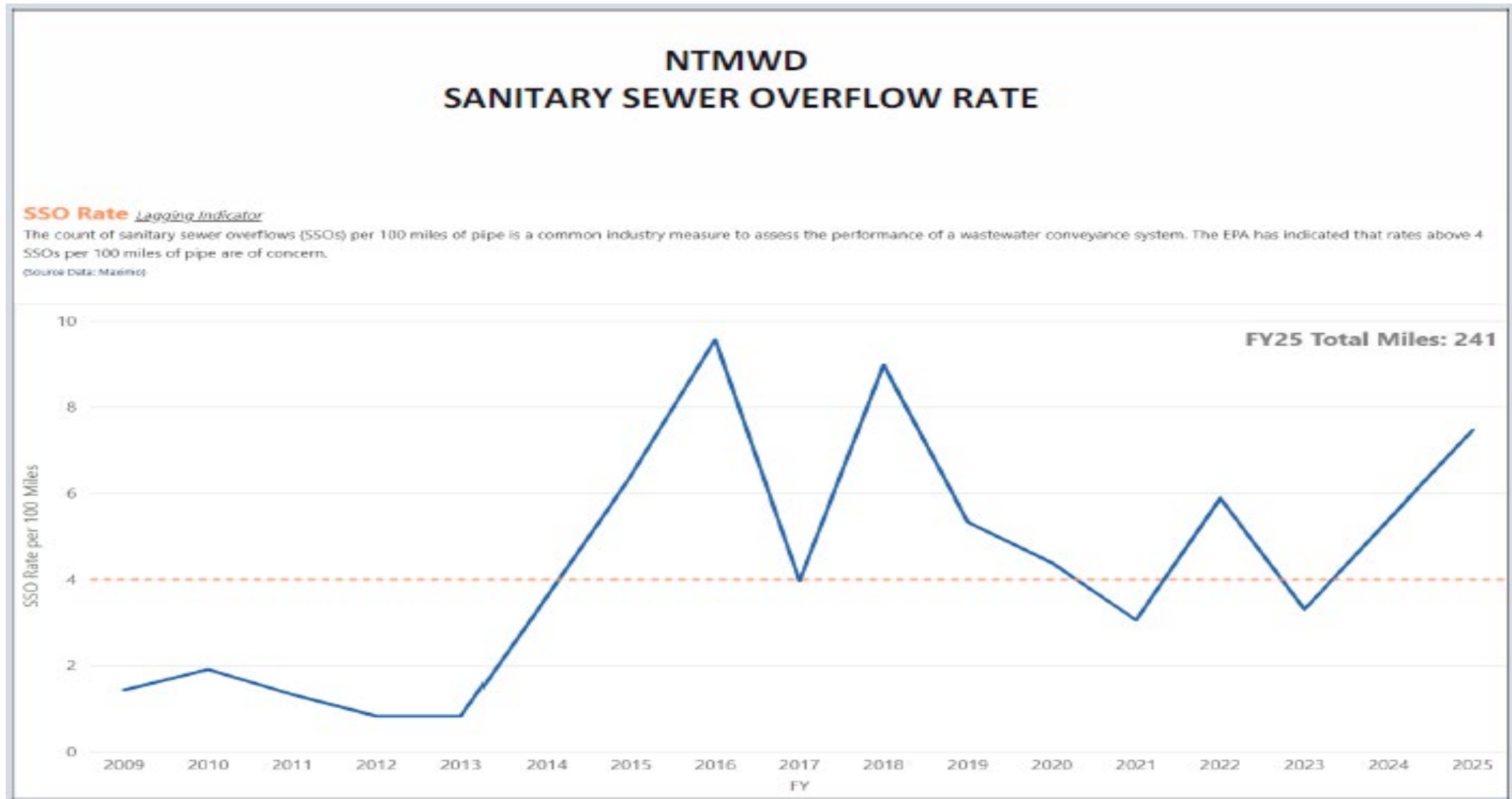


NORTH  
TEXAS  
MUNICIPAL  
WATER  
DISTRICT

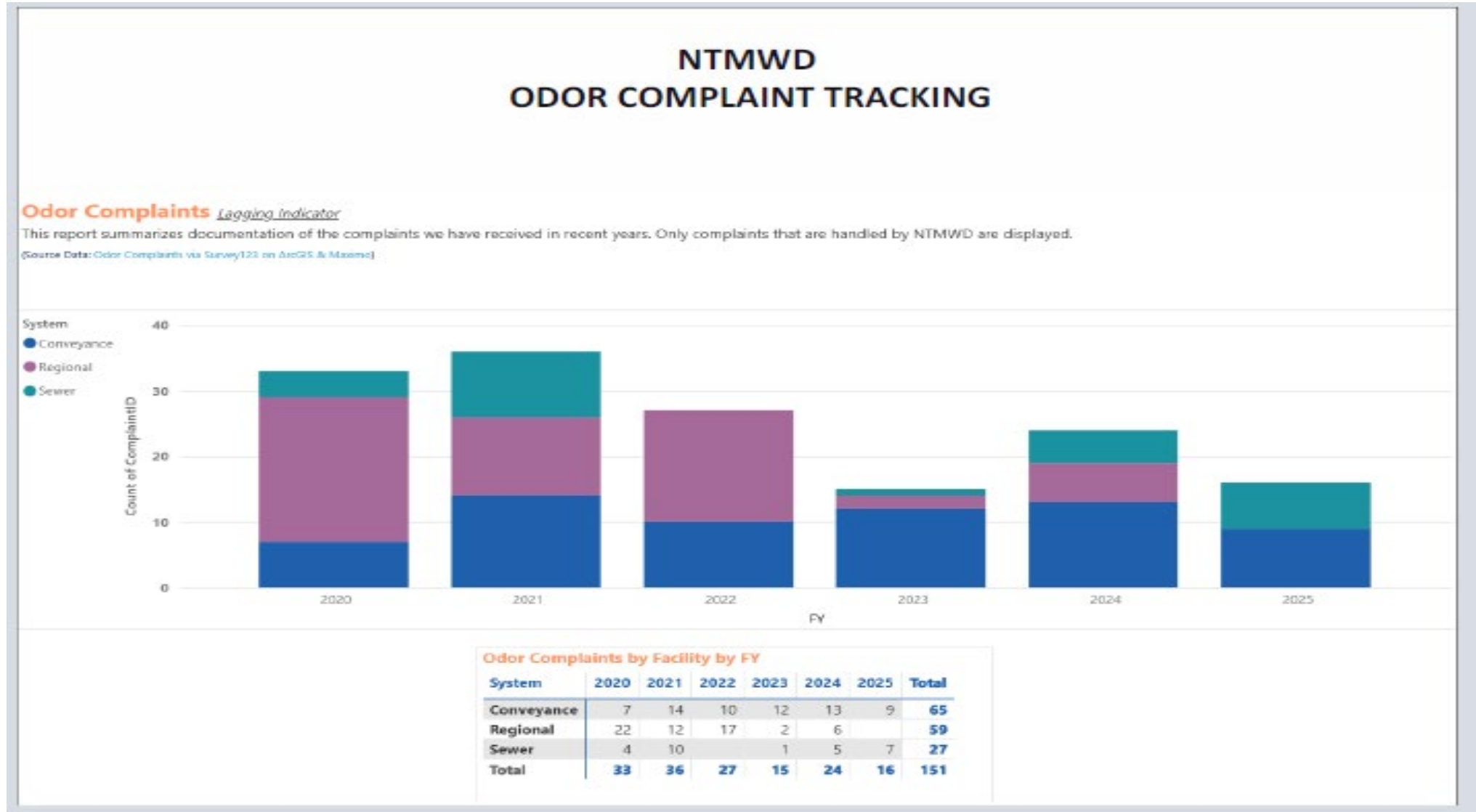
## NTMWD WASTEWATER TREATMENT PLANT CAPACITY REPORT June FY 2025

Wastewater Treatment Plant	Monthly Total Flow MG	Monthly Average Daily Flow MGD	Permitted AADF MGD (Current Design Capacity)	Actual AADF MGD	Permitted Peak 2 Hour MGD	Actual Monthly Peak 2 Hour MGD	FYTD Peak 2 hour MGD	% Capacity (AADF/Permitted AADF)
<b>Regional Wastewater System</b>								
Floyd Branch	94.530	3.151	4.750	2.927	9.999	6.466	14.660	61.6%
Rowlett Creek	676.170	22.539	24.000	20.525	77.500	62.156	78.134	85.5%
South Mesquite	959.523	31.984	33.000	26.918	82.501	79.000	99.927	81.6%
Wilson Creek	2,005.926	66.864	64.000	61.521	224.002	110.844	180.922	96.1%
<b>Sewer System &gt; 1 MGD</b>								
Buffalo Creek	9.148	0.305	2.250	0.547	8.227	0.811	4.785	24.3%
Muddy Creek	285.479	9.516	10.000	8.359	30.000	24.251	31.385	83.6%
Panther Creek	201.587	6.720	10.000	6.316	30.000	15.312	15.312	63.2%
Sabine Creek	110.590	3.686	3.000	3.228	9.000	7.104	9.396	107.6%
Squabble Creek	21.428	0.714	1.200	0.761	3.000	3.881	3.881	63.4%
Stewart Creek	138.190	4.606	10.000	4.576	35.000	8.958	9.369	45.8%
Wastewater Treatment Plant	Monthly Total Flow MG	Monthly Average Daily Flow MGD	Permitted AADF MGD (Current Design Capacity)	Actual AADF MGD	Permitted Peak 2 Hour MGD	Actual Monthly Peak 2 Hour MGD	FYTD Peak 2 hour MGD	% Capacity (AADF/Permitted AADF)
<b>Sewer System &lt; 1 MGD</b>								
Bear Creek	19.563	0.652	0.500	0.641	1.333	2.856	2.969	128.2%
Seis Lagos	6.568	0.219	0.250	0.186	0.720	1.212	1.250	74.4%

# Fiscal Year 2025 Key Performance Indicator Highlights



# Fiscal Year 2025 Key Performance Indicator Highlights



# Agenda

## IV. ACTION ITEMS

- A. Consider approval of Wastewater Committee meeting minutes – June 25, 2025
- B. Rowlett Creek Regional Wastewater Treatment Plant Administration Building, Project No. 301-0524-19; Tabulation of Bids and Award of Contract
- C. Rowlett Creek Regional Wastewater Treatment Plant Peak Flow Management Improvements, Phase II; Project No. 301-0471-17; Engineering Services Agreement, and Construction Management and Inspection Services
- D. Panther Creek Wastewater Treatment Plant Expansion to 15 MGD; Project No. 307-0493-18; Change Order No. 1
- E. Sister Grove Regional Water Resource Recovery Facility Influent Junction Structure; Project No. 301-0674-25; Engineering Services Agreement
- F. Wilson Creek Regional Wastewater Treatment Plant Primary Clarifiers, Ultraviolet Light and Centrifuge Improvements, Project No. 301-0606-22; Tabulation of Bids, Award of Contract
- G. South Mesquite Creek Regional Wastewater Treatment Plant Peak Flow Management and Expansion, Project No. 301-0525-18; Amendment No. 9, Partial GMP No. 7, Engineering Services During Construction, and Additional Construction Management, Inspection and Material Testing Services

## V. DISCUSSION ITEMS

- A. Buffalo Creek Parallel Interceptor, Phase II, Final Design and Engineering Services Agreement
- B. Wastewater systems overview and key performance indicator highlights
- C. **Regulatory compliance update – Executive Session**
- D. Opportunity for Committee members to provide feedback on Wastewater Committee meeting or request potential future agenda items

## Section 551.071, Consultation with Attorney

- Authorizes a government body to consult with its attorney in an Executive Session to seek advice on legal matters regarding pending or contemplated litigation or a settlement offer or on a matter in which the duty of the attorney to the governmental body under the Texas Disciplinary Rules of Professional Conduct of the State Bar of Texas clearly conflicts with the Texas Open Meetings Act.
- A government body may not invoke this Section to convene a closed session and then discuss matters outside of that provision.
- General discussion of policy, unrelated to legal matters, is not permitted under the language merely because an attorney is present.
- Items discussed during Executive Session are privileged and should remain confidential.





# Agenda

## IV. ACTION ITEMS

- A. Consider approval of Wastewater Committee meeting minutes – June 25, 2025
- B. Rowlett Creek Regional Wastewater Treatment Plant Administration Building, Project No. 301-0524-19; Tabulation of Bids and Award of Contract
- C. Rowlett Creek Regional Wastewater Treatment Plant Peak Flow Management Improvements, Phase II; Project No. 301-0471-17; Engineering Services Agreement, and Construction Management and Inspection Services
- D. Panther Creek Wastewater Treatment Plant Expansion to 15 MGD; Project No. 307-0493-18; Change Order No. 1
- E. Sister Grove Regional Water Resource Recovery Facility Influent Junction Structure; Project No. 301-0674-25; Engineering Services Agreement
- F. Wilson Creek Regional Wastewater Treatment Plant Primary Clarifiers, Ultraviolet Light and Centrifuge Improvements, Project No. 301-0606-22; Tabulation of Bids, Award of Contract
- G. South Mesquite Creek Regional Wastewater Treatment Plant Peak Flow Management and Expansion, Project No. 301-0525-18; Amendment No. 9, Partial GMP No. 7, Engineering Services During Construction, and Additional Construction Management, Inspection and Material Testing Services

## V. DISCUSSION ITEMS

- A. Buffalo Creek Parallel Interceptor, Phase II, Final Design and Engineering Services Agreement
- B. Wastewater systems overview and key performance indicator highlights
- C. Regulatory compliance update
- D. Opportunity for Committee members to provide feedback on Wastewater Committee meeting or request potential future agenda items



# Agenda

- I. CALL TO ORDER
- II. PUBLIC COMMENTS
- III. OPENING REMARKS
- IV. ACTION
- V. DISCUSSION
- VI. ADJOURNMENT**