



Panther Creek Wastewater Treatment Plant (Frisco)

WASTEWATER COMMITTEE MEETING

DECEMBER 17, 2025



Agenda

- I. CALL TO ORDER
- II. PUBLIC COMMENTS
- III. OPENING REMARKS
- IV. ACTION ITEMS
- V. DISCUSSION ITEMS
- VI. ADJOURNMENT



Agenda

IV. ACTION ITEMS

- A. Consider approval of Wastewater Committee meeting minutes – September 24, 2025
- B. Floyd Branch Regional Wastewater Treatment Plant Peak Flow and Ultraviolet Improvements; Project No. 301-0610-22; Tabulation of Bids, Award of Contract, Engineering Services Agreement, and Authorize Inspection Services
- C. Rowlett Creek Regional Wastewater Treatment Plant Peak Flow Management Improvements, Phase II; Project No. 301-0471-17; Amendment No. 1 to Construction Manager At-Risk; and Work Authorization No. 1
- D. Trinity East Fork Regional Water Resource Recovery Facility; Project No. 301-0678-25; Buffalo Creek Lift Station and Transfer Force Main Improvements Project No. 507-0679-25; Owner Advisor Services Agreement
- E. Buffalo Creek Lift Station No. 2; Project No. 507-0639-24; Tabulation of Bids, Award of Contract, and Inspection Services
- F. Tickey Creek Force Main; Project No. 501-0637-24; Tickey Creek Lift Station; Project No. 501-0638-24; Engineering Services Agreement, Final Engineering

V. DISCUSSION ITEMS

- A. Sister Grove Regional Water Resource Recovery Facility Phase I Additional Construction Support Services
- B. Sister Grove Regional Water Resource Recovery Facility Expansion to 48 MGD Preliminary Engineering
- C. Sabine Creek Wastewater Treatment Plant Expansion to 11 MGD Preliminary Engineering
- D. Opportunity for Committee members to provide feedback on Wastewater Committee meeting or request potential future agenda items

IV. ACTION ITEMS

- A. Consider approval of Wastewater Committee meeting minutes – September 24, 2025
- B. Floyd Branch Regional Wastewater Treatment Plant Peak Flow and Ultraviolet Improvements; Project No. 301-0610-22; Tabulation of Bids, Award of Contract, Engineering Services Agreement, and Authorize Inspection Services
- C. Rowlett Creek Regional Wastewater Treatment Plant Peak Flow Management Improvements, Phase II; Project No. 301-0471-17; Amendment No. 1 to Construction Manager At-Risk; and Work Authorization No. 1
- D. Trinity East Fork Regional Water Resource Recovery Facility; Project No. 301-0678-25; Buffalo Creek Lift Station and Transfer Force Main Improvements; Project No. 507-0679-25; Owner Advisor Services Agreement
- E. Buffalo Creek Lift Station No. 2; Project No. 507-0639-24; Tabulation of Bids, Award of Contract, and Inspection Services
- F. Tickey Creek Force Main; Project No. 501-0637-24; Tickey Creek Lift Station; Project No. 501-0638-24; Engineering Services Agreement, Final Engineering

V. DISCUSSION ITEMS

- A. Sister Grove Regional Water Resource Recovery Facility Phase I Additional Construction Support Services
- B. Sister Grove Regional Water Resource Recovery Facility Expansion to 48 MGD Preliminary Engineering
- C. Sabine Creek Wastewater Treatment Plant Expansion to 11 MGD Preliminary Engineering
- D. Opportunity for Committee members to provide feedback on Wastewater Committee meeting or request potential future agenda items



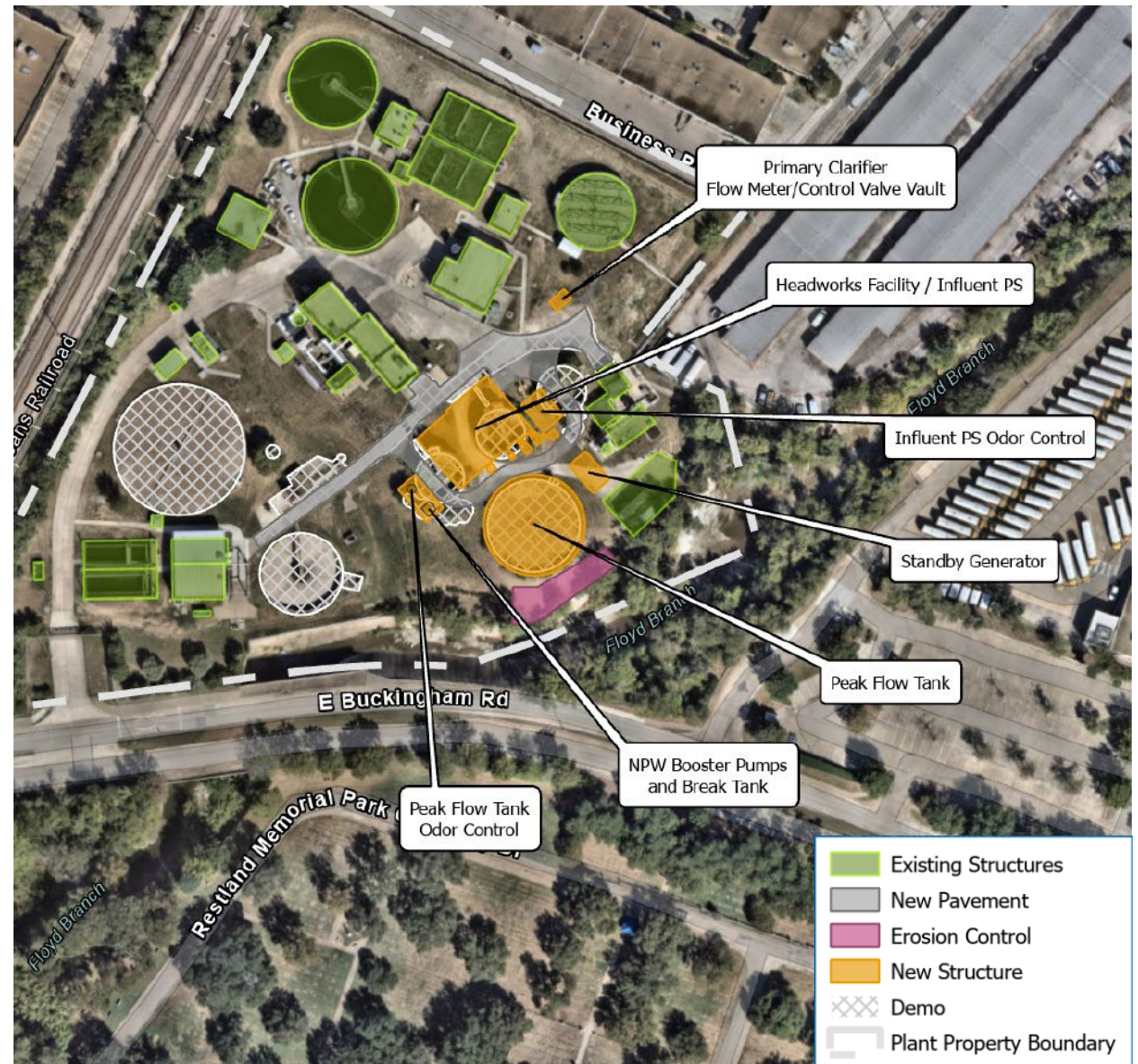
Floyd Branch Regional Wastewater Treatment Plant Peak Flow and UV Improvements

Project Purpose

- Address wet weather events and constraints in the existing facilities to ensure meeting the discharge permit during a peak flow event.
- Project scope was broken into two construction contracts. The UV Improvements contract is nearly complete. Construction of the Peak Flow improvements is now being requested.

Project Components

- New 1.6 mg Peak Flow Tank
- Influent Pump Station Improvements
 - (6) New 70 HP Pumps
- Headworks Improvements
 - New Step Screens
 - Screenings Room
- Demolition of abandoned facilities





Floyd Branch Regional Wastewater Treatment Plant Peak Flow and UV Improvements

Bidder	Total Bid	Recommendation
Felix Construction Company	\$36,981,000	Lowest Responsible Bidder Recommended for Award
Harper Brothers Construction, LLC	\$57,589,000	
Engineer's OPCC	\$38,100,000	

Engineering Services During Construction (CDM Smith) - \$761,868

- Project management, coordination with contractor and meetings over the projected 24-month construction duration
- Review of shop drawing submittals, requests for information, proposed change orders and operation and maintenance manuals
- Participate in factory acceptance testing and functional demonstration testing
- Assistance during startup and substantial and final completion observations

Internal Inspection Services - \$720,540

- NTMWD will utilize its inspection staff to cover all inspection tasks



Committee Consideration

The Executive Director and NTMWD staff recommend the Board of Directors authorize the award of a contract and services as follows:

Contractor:	Felix Construction Company LLC
Consultant:	CDM Smith Inc.
Scope:	Construction Contract, Engineering Services During Construction, and Internal Inspection Services
Project:	No. 301-0610B-22; Floyd Branch Regional Wastewater Treatment Plant Peak Flow and UV Improvements
Amount:	Construction Contract: \$36,981,000 Engineering Services During Construction: \$761,868 Internal Inspection Services: \$720,540
Funding:	Regional Wastewater System Extendable Commercial Paper Program
Drivers:	Redundancy/Resiliency, Operational Efficiency

IV. ACTION ITEMS

- A. Consider approval of Wastewater Committee meeting minutes – September 24, 2025
- B. Floyd Branch Regional Wastewater Treatment Plant Peak Flow and Ultraviolet Improvements, Project No. 301-0610-22; Tabulation of Bids, Award of Contract, Engineering Services Agreement, and Authorize Inspection Services
- C. Rowlett Creek Regional Wastewater Treatment Plant Peak Flow Management Improvements, Phase II; Project No. 301-0471-17 Construction Manager At-Risk Work Authorization No. 1
- D. Trinity East Fork Regional Water Resource Recovery Facility, Project No. 301-0678-25; Buffalo Creek Lift Station and Transfer Force Main Improvements, Project No. 507-0679-25; Owner Advisor Services Agreement
- E. Buffalo Creek Lift Station No. 2; Project No. 507-0639-24; Tabulation of Bids, Award of Contract, and Inspection Services
- F. Tickey Creek Force Main; Project No. 501-0637-24; Tickey Creek Lift Station; Project No. 501-0638-24; Engineering Services Agreement, Final Engineering

V. DISCUSSION ITEMS

- A. Sister Grove Regional Water Resource Recovery Facility Phase I Additional Construction Support Services
- B. Sister Grove Regional Water Resource Recovery Facility Expansion to 48 MGD Preliminary Engineering
- C. Sabine Creek Wastewater Treatment Plant Expansion to 11 MGD Preliminary Engineering
- D. Opportunity for Committee members to provide feedback on Wastewater Committee meeting or request potential future agenda items

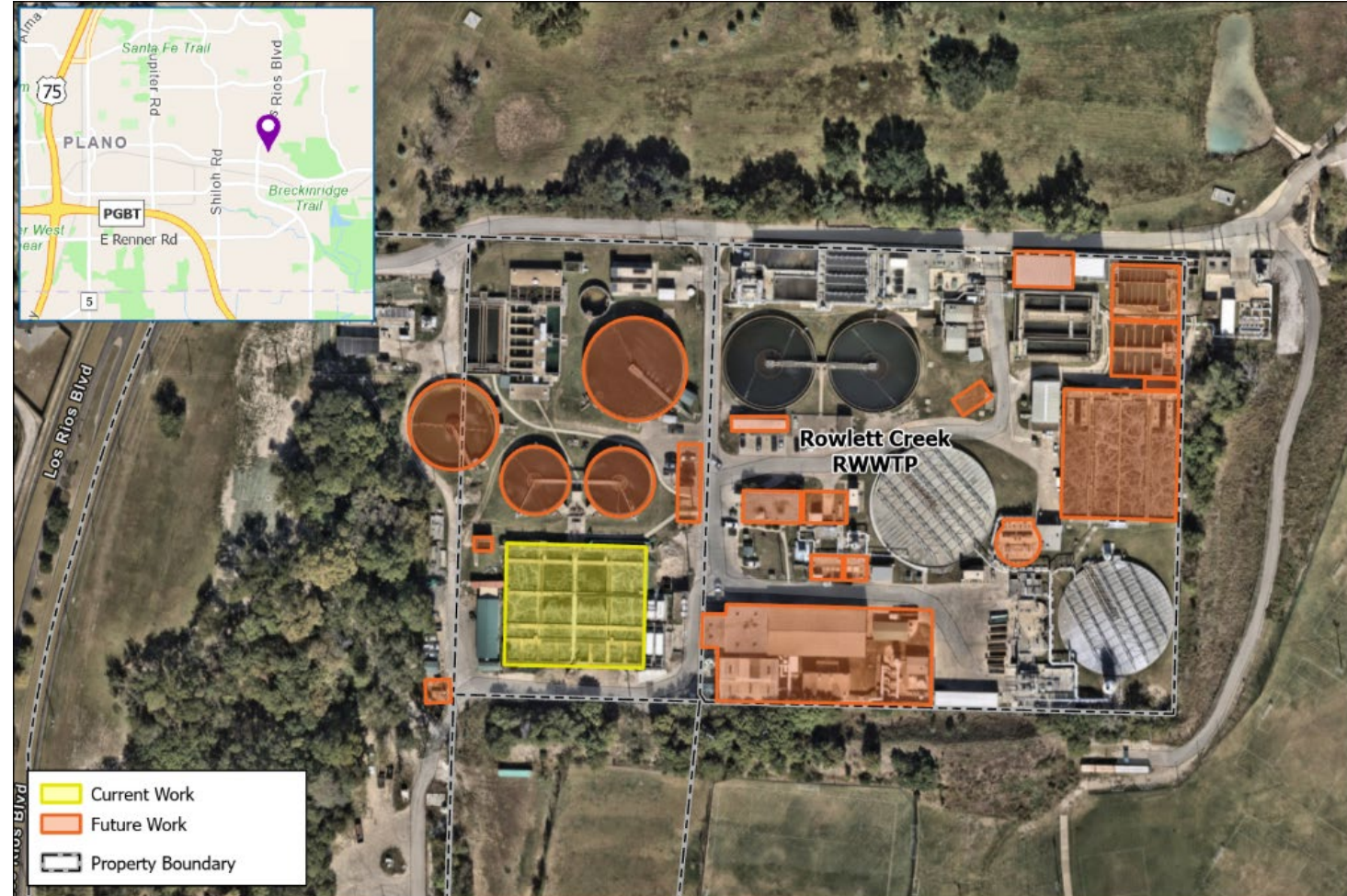
Rowlett Creek Peak Flow Improvements, Phase II

Project Purpose

- Expansion of treatment capacity from 77.5 million gallons per day (MGD) peak two-hour flow to 95 MGD peak two-hour flow

Project Components

- Influent pumping, Train A aeration blowers, conversion to step feed, clarifier improvements, ferric sulfate facility, filtration facility, ultraviolet light (UV) disinfection facility, and plant outfall pipeline
- Electrical and SCADA system improvements and solids handling building
- Estimated GMP of \$300 million





Rowlett Creek Peak Flow CMAR Agreement

- Under the new contracting template – when the initial award of a Construction Manager At Risk contract is presented for award, the Board authorizes the following items:
 - CMAR fee (percent fee applied to cost of work)
 - CMAR Services (previously called Preconstruction and Procurement Services)
 - Estimated CMAR Construction Support Costs (previously embedded in General Conditions)
 - **Fixed Construction Support Costs** (example would be bonds, insurance, miscellaneous taxes, office expenses, site costs that are not time dependent – paid monthly over duration of project)
 - **Time Sensitive Construction Support Costs** (site personnel, trailer, vehicles, office support, toilets, etc. – paid on Time and Material basis) based on a fee schedule proposal submitted during the CMAR Procurement process.
 - At the time of first Work Authorization, the contract stipulates award of Fixed Construction Support Costs for the duration of the 5-year contract period.
- AM-6160 approved in July 2025 awarded the following:
 - 8% CMAR fee (with reduced fee for some equipment purchases)
 - \$2,384,915 for Preconstruction/Procurement Services
 - \$8,123,800 Fixed Construction Support Costs (awarded once at first Work Authorization)
 - \$18,842,118 Time Sensitive Construction Support Costs (5 years of support costs, awarded in partial amounts based on duration of Work Authorization)
 - Assumed \$300M cost of work
 - Assumed 5 years for completion of work



Rowlett Creek Peak Flow Improvements, Phase II

Rowlett Creek Regional Wastewater Treatment Plant Peak Flow Management Improvements, Phase II; Work Authorization No. 1

Major Scope of Work Description – Work Authorization No. 1	Amount
Work Package No. 1 : Train A Diffuser and Air Piping Improvements Cost of Work	\$7,400,000
CMAR Fees (8.0% of the Work Package 1 Cost of Work)	\$592,000
CMAR Contingency for Work Authorization No. 1 (based on Risk Register)	\$249,000
Owner Contingency for Work Authorization No. 1 (based on Risk Register)	\$148,122
Total Cost of Work plus Fees and Contingency	\$8,389,122
Fixed Construction Support Costs (for project estimated cost of \$300M and 5-year duration – one time authorization)	\$8,123,800
Time Sensitive Construction Support Costs (12 months for Work Authorization No. 1)	\$3,768,424
Work Authorization No. 1 (Sum of Total Cost of Work, CMAR Fees, and Construction Support Costs)	\$20,281,346



Committee Consideration

The Executive Director and NTMWD staff recommend the Board of Directors authorize the Executive Director to execute Work Authorization No. 1 to the Construction Manager At-Risk as follows:

CMAR: Archer Western Construction, LLC (Archer Western)

Scope: Construction, Rowlett Creek Regional Wastewater Treatment Plant Work Authorization No. 1

Project: No. 301-0471-17, Rowlett Creek Regional Wastewater Treatment Plant Peak Flow Management Improvements, Phase II

Amount: Work Authorization No. 1: \$20,281,346

Funding: Regional Wastewater System Extendable Commercial Paper Program

Drivers: Regulatory Compliance, Capacity

IV. ACTION ITEMS

- A. Consider approval of Wastewater Committee meeting minutes – September 24, 2025
- B. Floyd Branch Regional Wastewater Treatment Plant Peak Flow and Ultraviolet Improvements; Project No. 301-0610-22; Tabulation of Bids, Award of Contract, Engineering Services Agreement, and Authorize Inspection Services
- C. Rowlett Creek Regional Wastewater Treatment Plant Peak Flow Management Improvements, Phase II; Project No. 301-0471-17; Amendment No. 1 to Construction Manager At-Risk; and Work Authorization No. 1
- D. Trinity East Fork Regional Water Resource Recovery Facility, Project No. 301-0678-25; Buffalo Creek Lift Station and Transfer Force Main Improvements; Project No. 507-0679-25; Owner Advisor Services Agreement**
- E. Buffalo Creek Lift Station No. 2; Project No. 507-0639-24; Tabulation of Bids, Award of Contract, and Inspection Services
- F. Tickey Creek Force Main; Project No. 501-0637-24; Tickey Creek Lift Station; Project No. 501-0638-24; Engineering Services Agreement, Final Engineering

V. DISCUSSION ITEMS

- A. Sister Grove Regional Water Resource Recovery Facility Phase I Additional Construction Support Services
- B. Sister Grove Regional Water Resource Recovery Facility Expansion to 48 MGD Preliminary Engineering
- C. Sabine Creek Wastewater Treatment Plant Expansion to 11 MGD Preliminary Engineering
- D. Opportunity for Committee members to provide feedback on Wastewater Committee meeting or request potential future agenda items



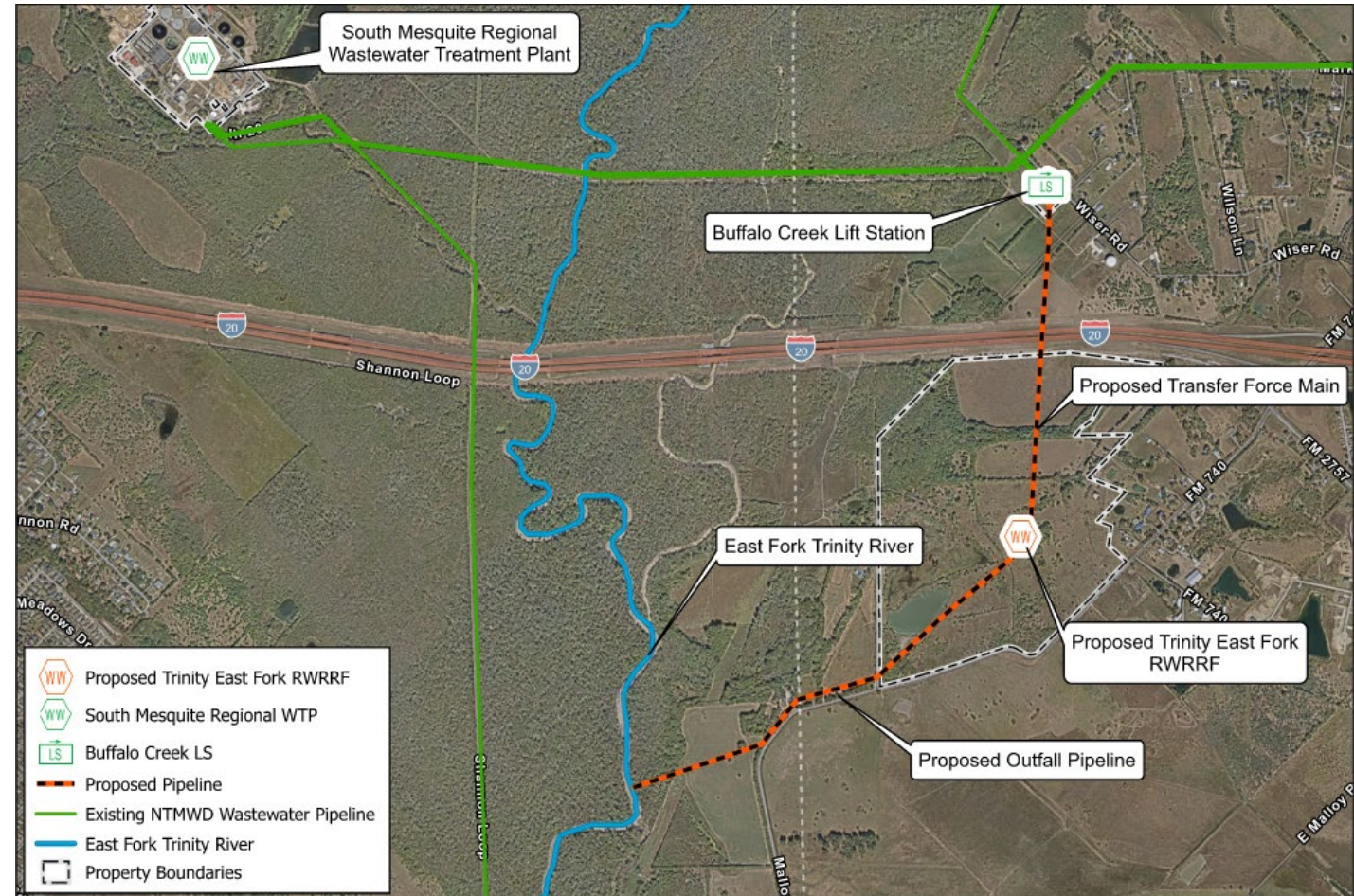
Trinity East Fork Regional Water Resource Recovery Facility Program

Project Purpose

- Trinity East Fork Regional Water Resource Recovery Facility (RWRRF) is needed by 2031 to serve growth in the region beyond the capacity of South Mesquite Creek Regional Wastewater Treatment Plant

Project Components

- A new 12 MGD RWRRF
- An outfall pipe to East Fork Trinity River
- Conveyance improvements for flow diversion:
 - Buffalo Creek Lift Station improvements
 - Transfer force main





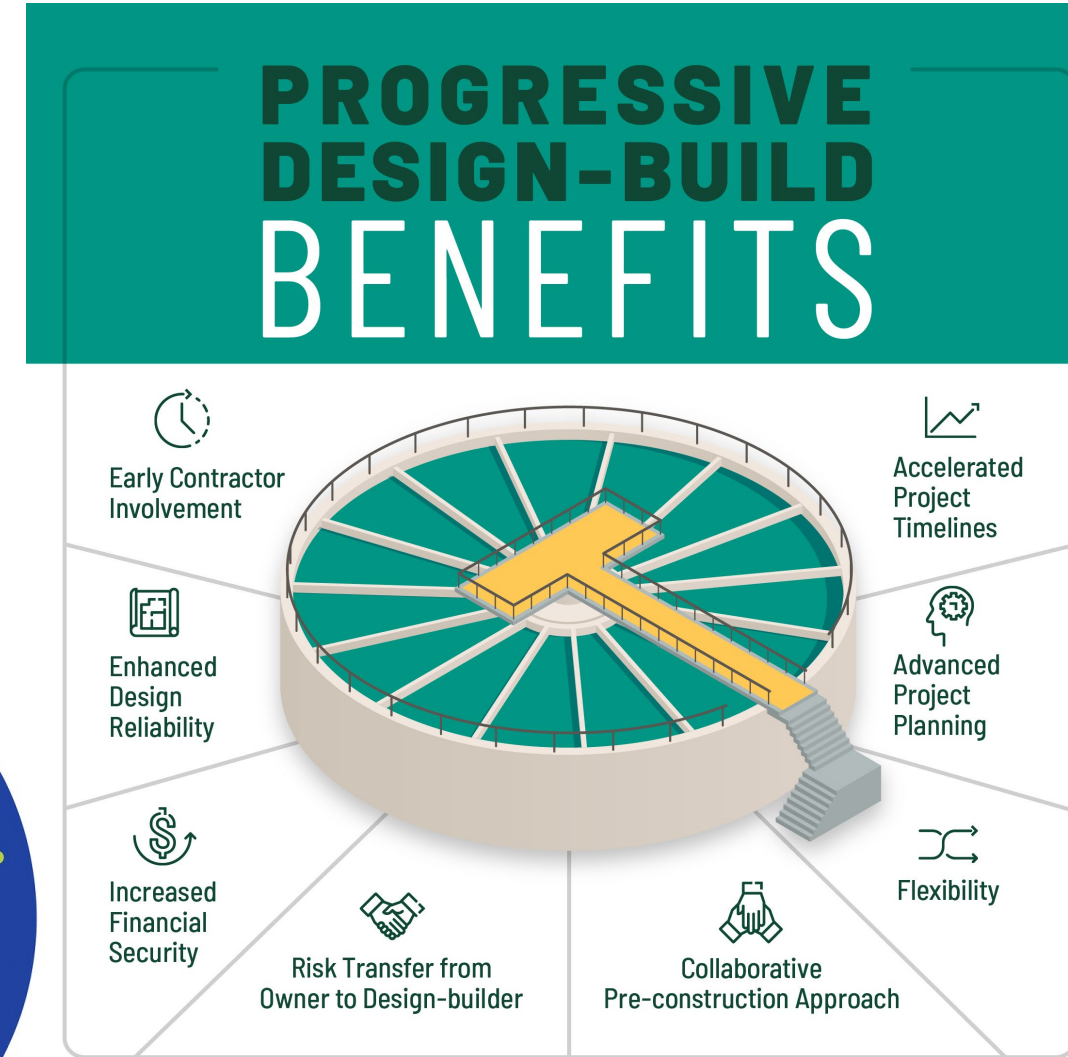
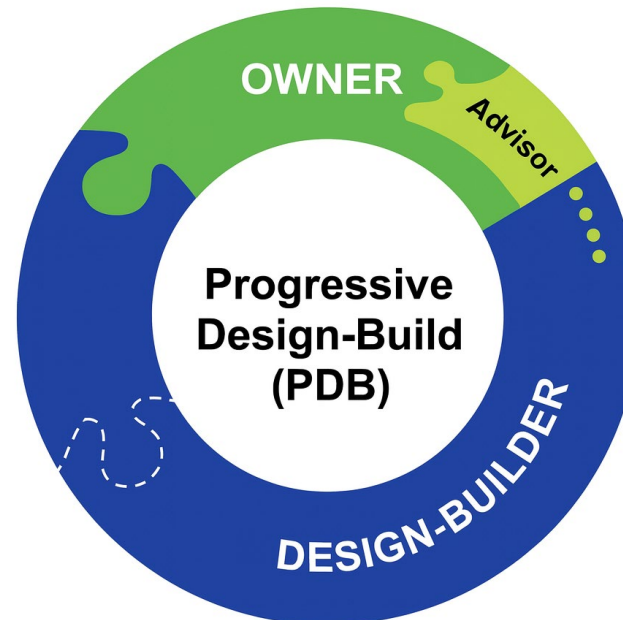
Progressive Design-Build and Owner Advisor

Progressive Design-Build:

- Collaborative project delivery approach
- Owner and design-builder work together from the start
- Define project scope and optimize design
- Manage risk effectively
- Establish cost before construction begins

Owner Advisor will:

- Manage risks and protect our interests
- Maximize value
- Enable informed decisions





Trinity East Fork Regional Water Resource Recovery Facility Program

Owner Advisor Services

- Initial Services in FY 26
 - Regulatory and Permitting Support
 - Project Management Support
 - Planning Phase Support
 - Progressive Design Build Procurement Phase Support
 - Engineering Design Support
 - Special services
- **Total Amount \$7,466,000**
 - AECOM Owner Advisor Services \$5,007,300
 - Subconsulting Services \$1,504,250
 - Contracted Services \$954,450
- Future amendments will cover pre-construction stage services and construction phase services.



Committee Consideration

The Executive Director and NTMWD staff recommend the Board of Directors authorize the Executive Director to execute an owner's advisor services agreement as follows:

Consultant: AECOM Technical Services, Inc.

Scope: Owner Advisor Services

Projects: No. 301-0678-25, Trinity East Fork Regional Water Resource Recovery Facility;
No. 507-0679-25, Buffalo Creek Lift Station and Transfer Force Main Improvements

Amount: \$7,466,000

Funding: Regional Wastewater System Extendable Commercial Paper Program and Buffalo Creek Interceptor System Construction Funds

Drivers: Capacity

IV. ACTION ITEMS

- A. Consider approval of Wastewater Committee meeting minutes – September 24, 2025
- B. Floyd Branch Regional Wastewater Treatment Plant Peak Flow and Ultraviolet Improvements; Project No. 301-0610-22; Tabulation of Bids, Award of Contract, Engineering Services Agreement, and Authorize Inspection Services
- C. Rowlett Creek Regional Wastewater Treatment Plant Peak Flow Management Improvements, Phase II; Project No. 301-0471-17; Amendment No. 1 to Construction Manager At-Risk; and Work Authorization No. 1
- D. Trinity East Fork Regional Water Resource Recovery Facility; Project No. 301-0678-25; Buffalo Creek Lift Station and Transfer Force Main Improvements; Project No. 507-0679-25; Owner Advisor Services Agreement
- E. Buffalo Creek Lift Station No. 2; Project No. 507-0639-24; Tabulation of Bids, Award of Contract, and Inspection Services
- F. Tickey Creek Force Main; Project No. 501-0637-24; Tickey Creek Lift Station; Project No. 501-0638-24; Engineering Services Agreement, Final Engineering

V. DISCUSSION ITEMS

- A. Sister Grove Regional Water Resource Recovery Facility Phase I Additional Construction Support Services
- B. Sister Grove Regional Water Resource Recovery Facility Expansion to 48 MGD Preliminary Engineering
- C. Sabine Creek Wastewater Treatment Plant Expansion to 11 MGD Preliminary Engineering
- D. Opportunity for Committee members to provide feedback on Wastewater Committee meeting or request potential future agenda items



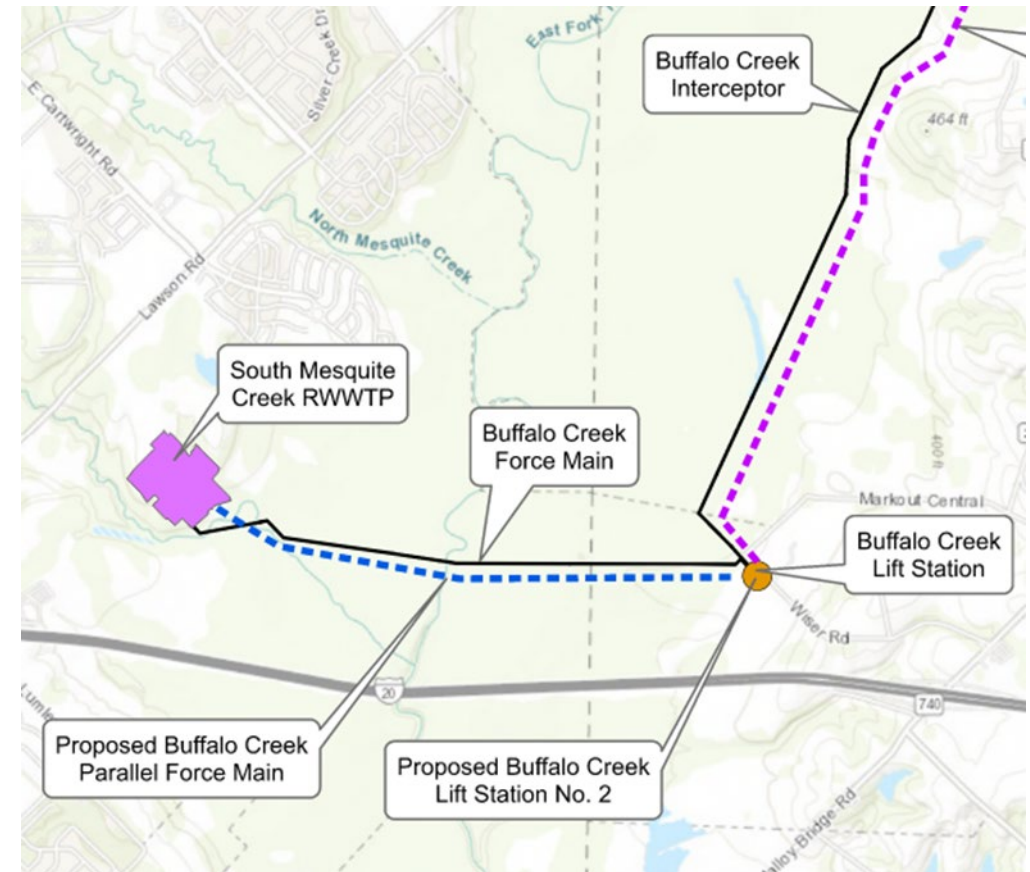
Buffalo Creek Lift Station No. 2, Tabulation of Bids and Award of Contract, and Inspection Services

Background

- The 2021 Buffalo Creek Interceptor System Capacity Assessment & Assurance report validated previous studies that identified the need for additional capacity in the Buffalo Creek Interceptor System to accommodate growth in Forney, Heath, and Rockwall.
- A 2023 Feasibility Analysis for Conveyance Alternatives Report recommended improvements to increase the system's pumping and conveyance capacity and manage peak weather flows at the treatment plant.

Project Purpose

- Add 32 MGD pumping capacity and force main to convey flows from the Buffalo Creek Interceptor System to South Mesquite Creek Regional Wastewater Treatment Plant

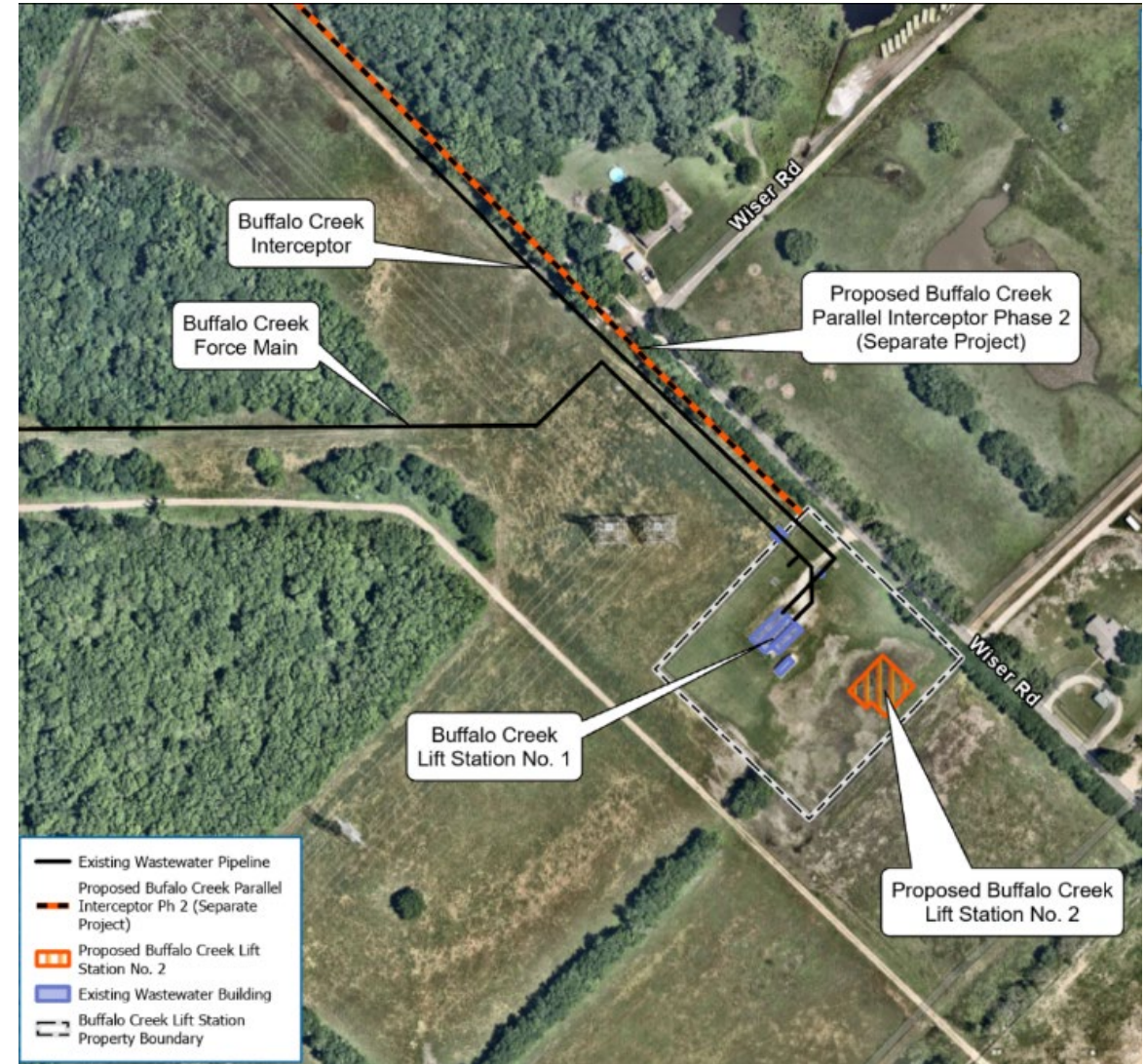




Buffalo Creek Lift Station No. 2, Tabulation of Bids and Award of Contract, and Inspection Services

Project Components

- New 32 MGD capacity lift station on the existing Buffalo Creek Lift Station site
- Early electrical equipment procurement package for long lead time items authorized by Board in July 2025
- Construction substantial completion anticipated in November 2027





Buffalo Creek Lift Station No. 2, Tabulation of Bids and Award of Contract, and Inspection Services

Tabulation of Bids

Bidder	Total Bid	Recommendation
Urban Infraconstruction, LLC	\$32,219,360	Lowest responsible bid Recommended for Award
Archer Western Construction, LLC	\$34,857,718	
BAR Constructors, Inc.	\$38,560,438	
Crescent Constructors, Inc.	\$49,584,959	
Thalle Construction Co., Inc.	\$60,772,500	
Engineer's OPCC	\$41,800,000	



Committee Consideration

The Executive Director, NTMWD staff and Carollo Engineers, Inc recommend the Board of Directors authorize the award of a contract as follows:

Contractor: Urban Infraconstruction, LLC

Scope: Construction Contract and Internal Inspection Services

Project: No. 507-0639-24, Buffalo Creek Lift Station No. 2

Amount: Construction Contract: \$32,219,360
Internal Inspection Services: \$ 805,560

Funding: Buffalo Creek Interceptor System Clean Water State Revolving Fund Program and Internal Inspection will be funded through Buffalo Creek Interceptor System Construction Funds

Drivers: Capacity, Redundancy/Resiliency

IV. ACTION ITEMS

- A. Consider approval of Wastewater Committee meeting minutes – September 24, 2025
- B. Floyd Branch Regional Wastewater Treatment Plant Peak Flow and Ultraviolet Improvements, Project No. 301-0610-22; Tabulation of Bids, Award of Contract, Engineering Services Agreement, and Authorize Inspection Services
- C. Rowlett Creek Regional Wastewater Treatment Plant Peak Flow Management Improvements, Phase II; Project No. 301-0471-17; Amendment No. 1 to Construction Manager At-Risk; and Work Authorization No. 1
- D. Trinity East Fork Regional Water Resource Recovery Facility, Project No. 301-0678-25; Buffalo Creek Lift Station and Transfer Force Main Improvements, Project No. 507-0679-25; Owner Advisor Services Agreement
- E. Buffalo Creek Lift Station No. 2; Project No. 507-0639-24; Tabulation of Bids, Award of Contract, and Inspection Services
- F. Tickey Creek Force Main; Project No. 501-0637-24; Tickey Creek Lift Station; Project No. 501-0638-24; Engineering Services Agreement, Final Engineering

V. DISCUSSION ITEMS

- A. Sister Grove Regional Water Resource Recovery Facility Phase I Additional Construction Support Services
- B. Sister Grove Regional Water Resource Recovery Facility Expansion to 48 MGD Preliminary Engineering
- C. Sabine Creek Wastewater Treatment Plant Expansion to 11 MGD Preliminary Engineering
- D. Opportunity for Committee members to provide feedback on Wastewater Committee meeting or request potential future agenda items

Tickey Creek Lift Station and Force Main

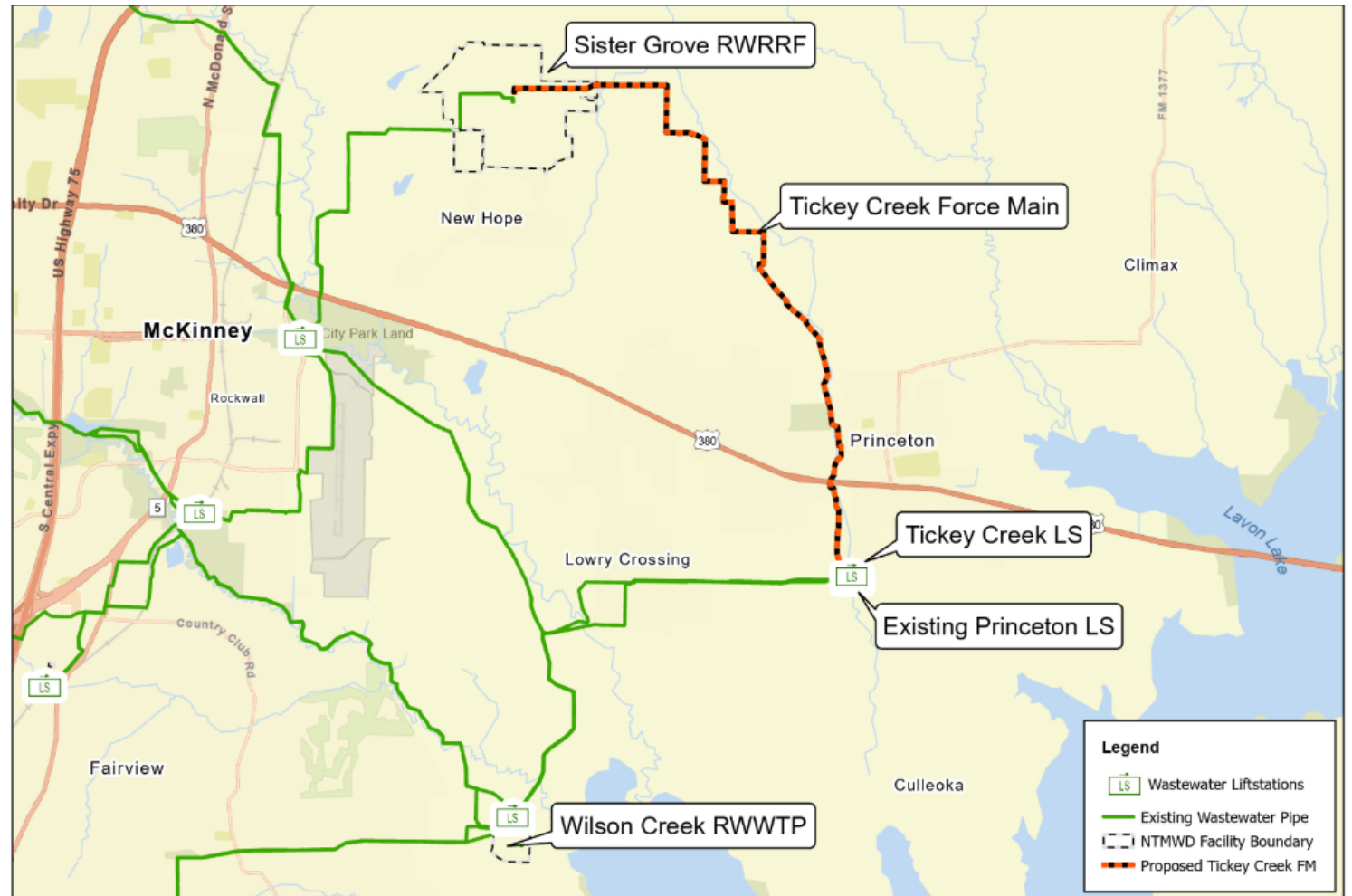
Background & Project Purpose

- The UEFIS Regional Capacity Assessment and Assurance Study identified the need for a new lift station and force main to serve projected growth in Princeton
- All flows entering the Tickey Creek Lift Station and Force Main are to be conveyed and treated at the Sister Grove Regional Water Resource Recovery Facility (SGRWRRF)
- A future lift station expansion and parallel force main will provide additional capacity as Princeton flows increase and will be under a separate project
- Planning Level Estimated Construction Cost is \$78,000,000 for the lift station and \$61,000,000 for the force main

Tickey Creek Lift Station and Force Main

Project Components

- 40 million gallons per day (MGD) lift station with odor control
- Flow diversion structures and discharge meter vault
- Floodplain mitigation
- 42,000 linear feet of 42-inch force main located near the Princeton LS to the SGRWRRF





Tickey Creek Lift Station and Force Main

Final Engineering Design (AECOM)

- Basic Services
 - Project management, coordination and design review workshops
 - Hydraulic modeling, physical modeling and floodplain study
 - Final design services for the lift station and force main
 - Bid phase services
- Special Services
 - Topographic and tree survey
 - Subsurface utility engineering
 - Geotechnical engineering
 - FEMA map revision
 - Radio path study
 - Additional environmental evaluation
- Final engineering fee is \$3,501,100 for the lift station and \$3,537,800 for the force main



Committee Consideration

The Executive Director and NTMWD staff recommend the Board of Directors authorize the Executive Director to execute an engineering services agreement (ESA) as follows:

Consultant: AECOM Technical Services, Inc.

Scope: Final Engineering Design

Project: No. 501-0637-24, Tickey Creek Force Main
No. 501-0638-24, Tickey Creek Lift Station

Amount: \$3,537,800, Tickey Creek Force Main
\$3,501,100, Tickey Creek Lift Station

Funding: Upper East Fork Interceptor System Construction Funds

Drivers: Capacity

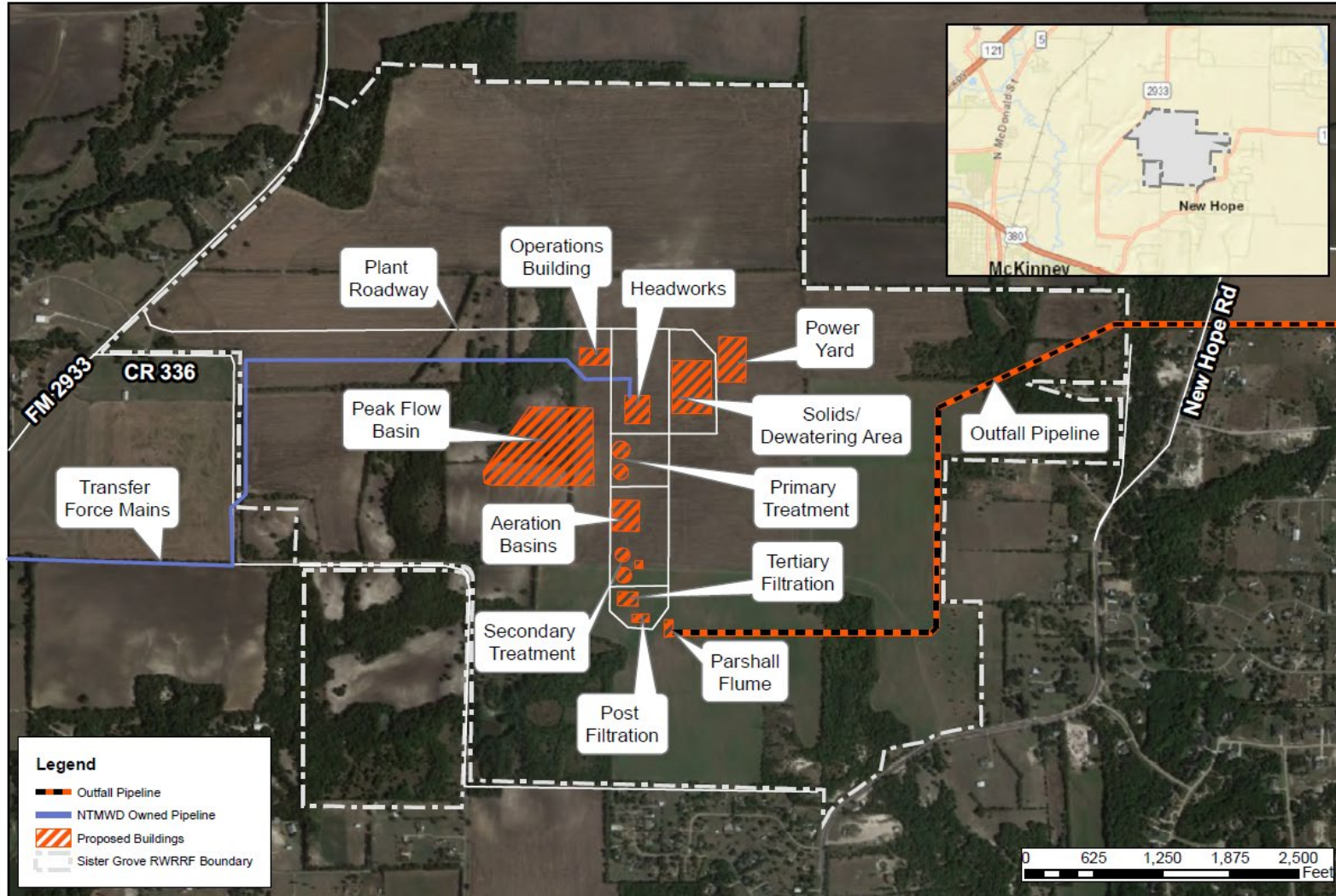
IV. ACTION ITEMS

- A. Consider approval of Wastewater Committee meeting minutes – September 24, 2025
- B. Floyd Branch Regional Wastewater Treatment Plant Peak Flow and Ultraviolet Improvements; Project No. 301-0610-22; Tabulation of Bids, Award of Contract, Engineering Services Agreement, and Authorize Inspection Services
- C. Rowlett Creek Regional Wastewater Treatment Plant Peak Flow Management Improvements, Phase II; Project No. 301-0471-17; Amendment No. 1 to Construction Manager At-Risk; and Work Authorization No. 1
- D. Trinity East Fork Regional Water Resource Recovery Facility; Project No. 301-0678-25; Buffalo Creek Lift Station and Transfer Force Main Improvements; Project No. 507-0679-25; Owner Advisor Services Agreement
- E. Buffalo Creek Lift Station No. 2; Project No. 507-0639-24; Tabulation of Bids, Award of Contract, and Inspection Services
- F. Tickey Creek Force Main; Project No. 501-0637-24; Tickey Creek Lift Station; Project No. 501-0638-24; Engineering Services Agreement, Final Engineering

V. DISCUSSION ITEMS

- A. Sister Grove Regional Water Resource Recovery Facility Phase I Additional Construction Support Services
- B. Sister Grove Regional Water Resource Recovery Facility Expansion to 48 MGD Preliminary Engineering
- C. Sabine Creek Wastewater Treatment Plant Expansion to 11 MGD Preliminary Engineering
- D. Opportunity for Committee members to provide feedback on Wastewater Committee meeting or request potential future agenda items

Sister Grove RWRRF Phase I



Background & Project Purpose

- New 16 MGD annual average day with a peak two-hour 64 MGD treatment facility
- Accommodate growth in the Upper East Fork Interceptor System and reduce loads on Wilson Creek RWWTP and Rowlett Creek RWWTP

Additional Services

- Engineering
- Program Management
- Construction Management
- Inspection

Sister Grove RWRRF Phase I

Additional Engineering Services (CDM Smith)

- Extend services during construction through April 2026 including construction meetings, progress meetings, and office engineering services
- Extended services for one senior full-time resident engineer
- \$400,000

Additional Program Management & Inspection Services (Freese and Nichols)

- Supplement NTMWD staff for program management, construction management, and administrative resources through April 2026
- Anticipate the need for three inspectors through April 2026
- \$750,000

Additional Internal Inspection Services

- Supplement outsourced SCADA inspection tasks with two full-time internal inspectors
- \$25,000

IV. ACTION ITEMS

- A. Consider approval of Wastewater Committee meeting minutes – September 24, 2025
- B. Floyd Branch Regional Wastewater Treatment Plant Peak Flow and Ultraviolet Improvements; Project No. 301-0610-22; Tabulation of Bids, Award of Contract, Engineering Services Agreement, and Authorize Inspection Services
- C. Rowlett Creek Regional Wastewater Treatment Plant Peak Flow Management Improvements, Phase II; Project No. 301-0471-17; Amendment No. 1 to Construction Manager At-Risk; and Work Authorization No. 1
- D. Trinity East Fork Regional Water Resource Recovery Facility; Project No. 301-0678-25; Buffalo Creek Lift Station and Transfer Force Main Improvements; Project No. 507-0679-25; Owner Advisor Services Agreement
- E. Buffalo Creek Lift Station No. 2; Project No. 507-0639-24; Tabulation of Bids, Award of Contract, and Inspection Services
- F. Tickey Creek Force Main; Project No. 501-0637-24; Tickey Creek Lift Station; Project No. 501-0638-24; Engineering Services Agreement, Final Engineering

V. DISCUSSION ITEMS

- A. Sister Grove Regional Water Resource Recovery Facility Phase I Additional Construction Support Services
- B. **Sister Grove Regional Water Resource Recovery Facility Expansion to 48 MGD Preliminary Engineering**
- C. Sabine Creek Wastewater Treatment Plant Expansion to 11 MGD Preliminary Engineering
- D. Opportunity for Committee members to provide feedback on Wastewater Committee meeting or request potential future agenda items



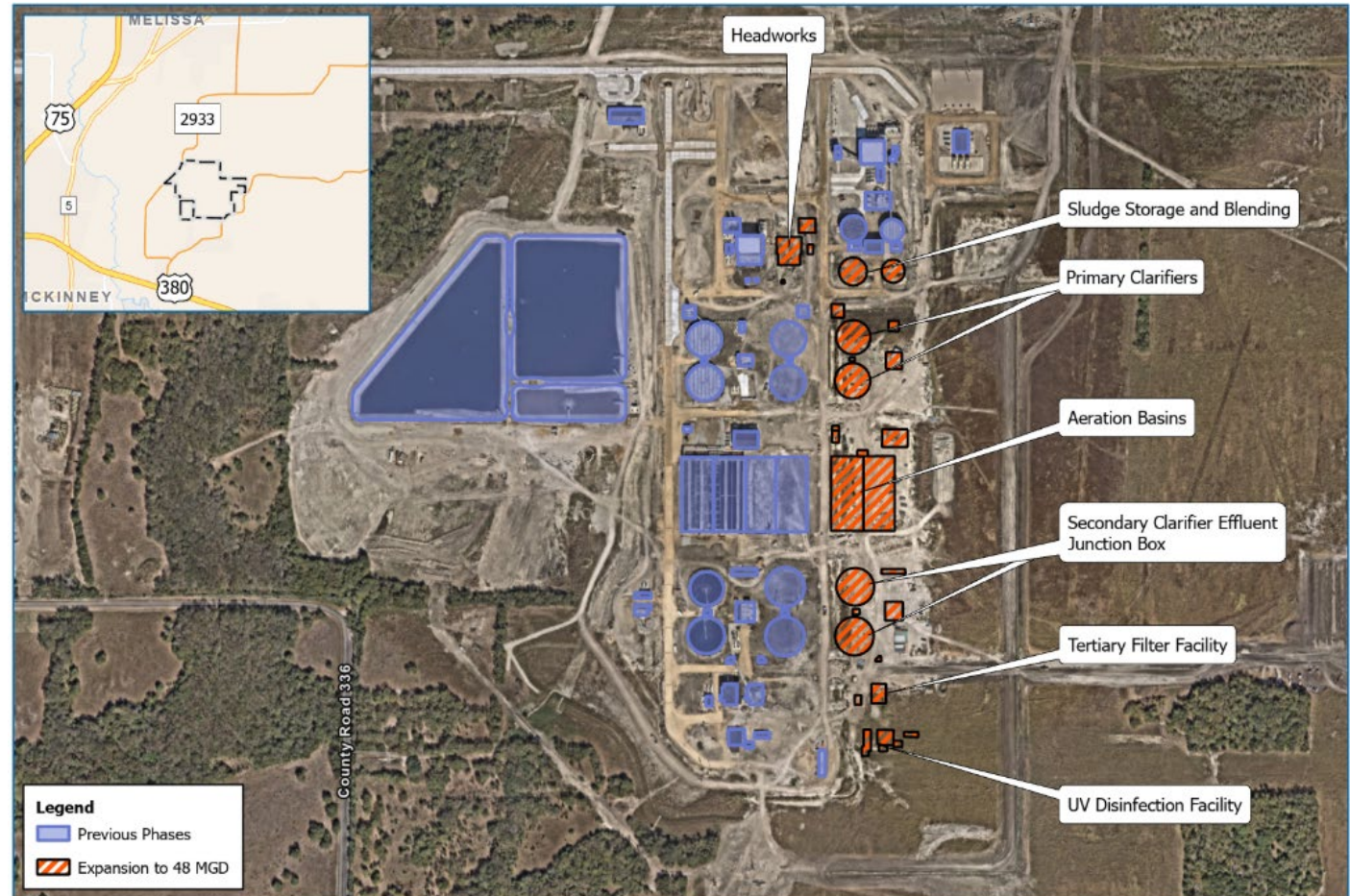
Sister Grove Regional Water Resource Recovery Facility (RWRRF) Expansion to 48 MGD

Project Purpose

- Expansion of treatment capacity of existing facilities from the current 32 MGD annual average daily flow to 48 MGD annual average daily flow with a peak two-hour flow of 192 MGD

Project Components

- 16 MGD treatment train including headworks, primary clarification, secondary treatment, tertiary filtration, and an ultraviolet light (UV) disinfection system
- Additional process equipment for solids handling facility and sludge storage
- Planning level estimated construction cost is \$600 million





Sister Grove RWRRF Expansion to 48 MGD

Preliminary Engineering (Garver)

- **Basic Services**
 - Evaluations assessment and recommendation
 - Project management and coordination
 - Preliminary design phase services
- **Special Services**
 - Geotechnical engineering
 - Topographic survey
 - Environmental services
- **Total Budget Amount: \$7,686,000**
- **Final fee amount under negotiation**

IV. ACTION ITEMS

- A. Consider approval of Wastewater Committee meeting minutes – September 24, 2025
- B. Floyd Branch Regional Wastewater Treatment Plant Peak Flow and Ultraviolet Improvements; Project No. 301-0610-22; Tabulation of Bids, Award of Contract, Engineering Services Agreement, and Authorize Inspection Services
- C. Rowlett Creek Regional Wastewater Treatment Plant Peak Flow Management Improvements, Phase II; Project No. 301-0471-17; Amendment No. 1 to Construction Manager At-Risk; and Work Authorization No. 1
- D. Trinity East Fork Regional Water Resource Recovery Facility; Project No. 301-0678-25; Buffalo Creek Lift Station and Transfer Force Main Improvements; Project No. 507-0679-25; Owner Advisor Services Agreement
- E. Buffalo Creek Lift Station No. 2; Project No. 507-0639-24; Tabulation of Bids, Award of Contract, and Inspection Services
- F. Tickey Creek Force Main; Project No. 501-0637-24; Tickey Creek Lift Station; Project No. 501-0638-24; Engineering Services Agreement, Final Engineering

V. DISCUSSION ITEMS

- A. Sister Grove Regional Water Resource Recovery Facility Phase I Additional Construction Support Services
- B. Sister Grove Regional Water Resource Recovery Facility Expansion to 48 MGD Preliminary Engineering
- C. **Sabine Creek Wastewater Treatment Plant Expansion to 11 MGD Preliminary Engineering**
- D. Opportunity for Committee members to provide feedback on Wastewater Committee meeting or request potential future agenda items



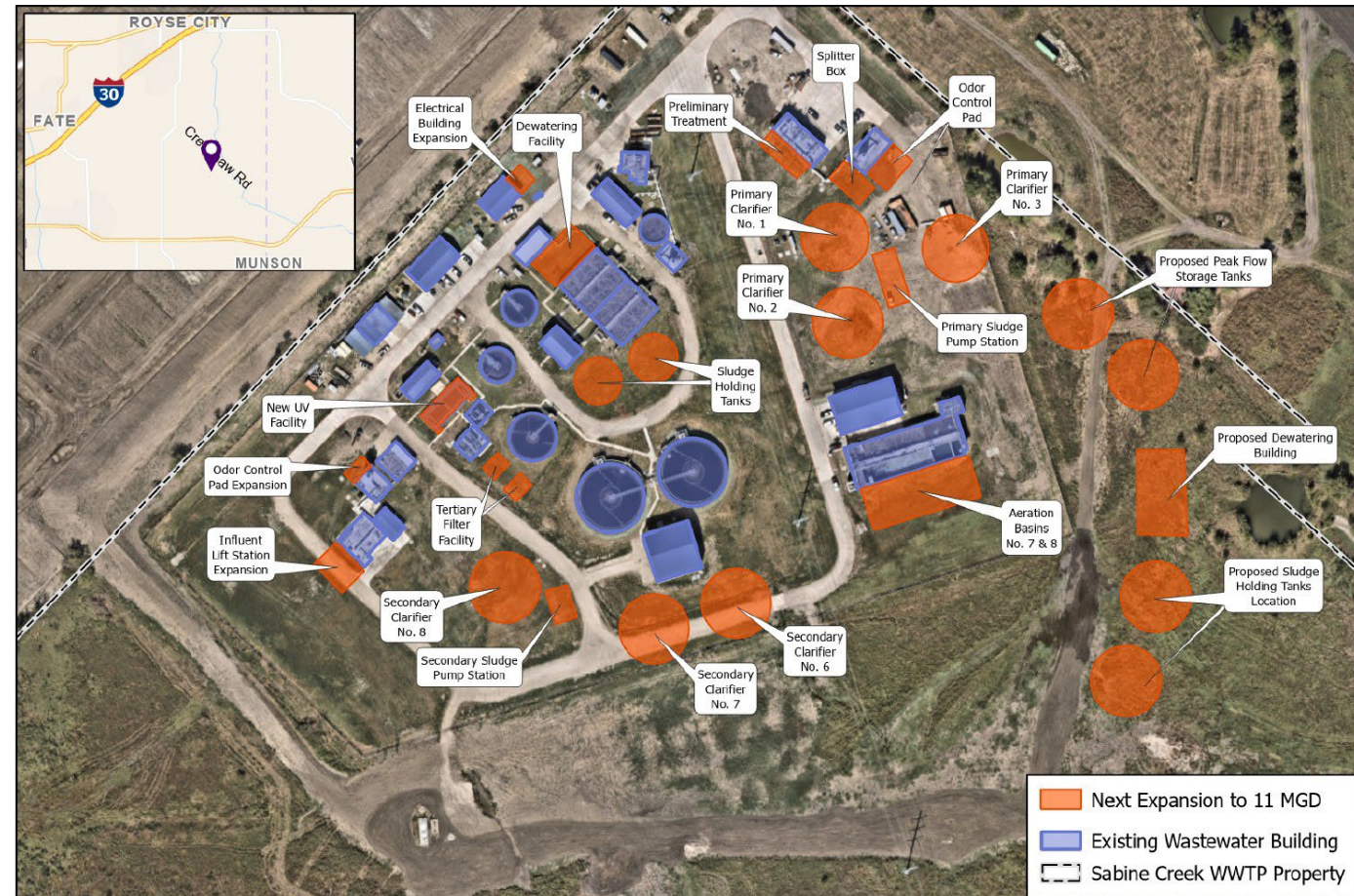
Sabine Creek Wastewater Treatment Plant Expansion to 11 MGD; Preliminary Engineering

Project Purpose

Current growth projections within the Sabine Creek WWTP service area indicate system demand will exceed plant capacity by the year 2031. Plant expansion is needed to serve the rapidly growing service area.

Project Components

- Evaluate and Recommend Improvements to:
 - Peak Flow management
 - Influent Lift Station No. 2, Rehabilitation of Influent Junction Box
 - Emergency Backup Power, Electrical and SCADA improvements
 - Preliminary, Biological, Secondary and Tertiary Treatment
 - Solids and Dewatering
 - UV Disinfection
 - Operations Building, Road and ancillary site improvements, potable water supply
- Planning level construction cost: \$145 M





Sabine Creek Wastewater Treatment Plant Expansion to 11 MGD; Preliminary Engineering

Preliminary Engineering Services (Brown & Caldwell) -

- **Basic Services:**

- Project management plan and coordination
- Preliminary design phase services
 - Develop basic design criteria including flows, loads and TCEQ regulations
 - Develop model of treatment processes
 - Monthly design progress meetings
 - Nine design workshops
- Preliminary design report
 - 10% design drawings with construction cost estimate

- **Special Services:**

- Drafting/Modeling of existing structures

- **Total Budget Amount: \$1,545,000**

- **Final fee amount under negotiation**



Agenda

IV. ACTION ITEMS

- A. Consider approval of Wastewater Committee meeting minutes – September 24, 2025
- B. Floyd Branch Regional Wastewater Treatment Plant Peak Flow and Ultraviolet Improvements; Project No. 301-0610-22; Tabulation of Bids, Award of Contract, Engineering Services Agreement, and Authorize Inspection Services
- C. Rowlett Creek Regional Wastewater Treatment Plant Peak Flow Management Improvements, Phase II; Project No. 301-0471-17; Amendment No. 1 to Construction Manager At-Risk; and Work Authorization No. 1
- D. Trinity East Fork Regional Water Resource Recovery Facility; Project No. 301-0678-25; Buffalo Creek Lift Station and Transfer Force Main Improvements; Project No. 507-0679-25; Owner Advisor Services Agreement
- E. Buffalo Creek Lift Station No. 2; Project No. 507-0639-24; Tabulation of Bids, Award of Contract, and Inspection Services
- F. Tickey Creek Force Main; Project No. 501-0637-24; Tickey Creek Lift Station; Project No. 501-0638-24; Engineering Services Agreement, Final Engineering

V. DISCUSSION ITEMS

- A. Sister Grove Regional Water Resource Recovery Facility Phase I Additional Construction Support Services
- B. Sister Grove Regional Water Resource Recovery Facility Expansion to 48 MGD Preliminary Engineering
- C. Sabine Creek Wastewater Treatment Plant Expansion to 11 MGD Preliminary Engineering
- D. Opportunity for Committee members to provide feedback on Wastewater Committee meeting or request potential future agenda items



Agenda

- I. CALL TO ORDER
- II. PUBLIC COMMENTS
- III. OPENING REMARKS
- IV. ACTION
- V. DISCUSSION
- VI. ADJOURNMENT**