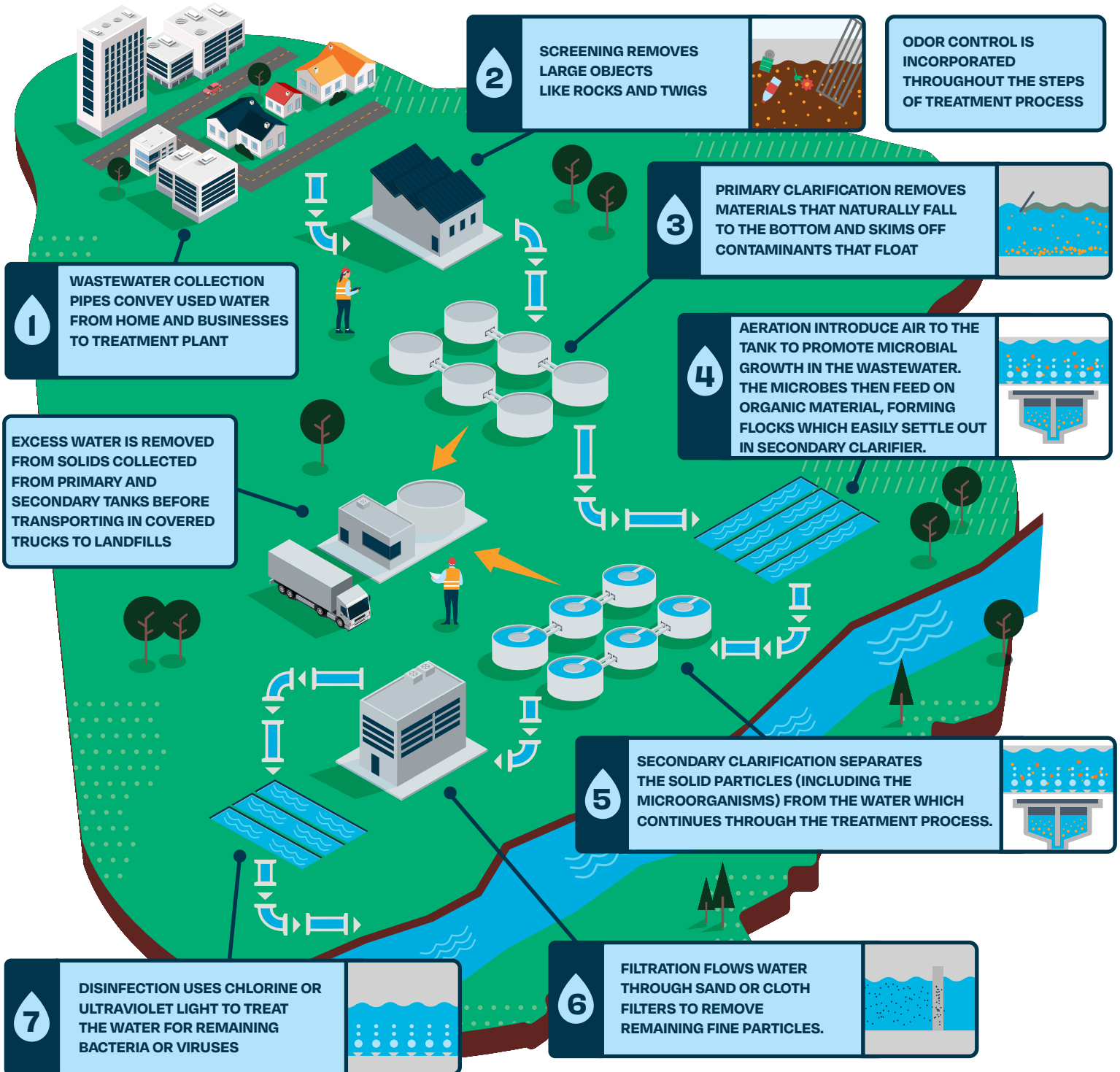




NORTH
TEXAS
MUNICIPAL
WATER
DISTRICT

7 STEPS TO CLEAN WATER



**FAST
FACTS**

 **13**
WASTEWATER
TREATMENT PLANTS

 **163+** MGD
(MILLION GALLONS/DAY)
WASTEWATER
TREATMENT CAPACITY
ANNUAL AVERAGE

 **242**
MILES OF LARGE-DIAMETER
WASTEWATER PIPELINES