



NORTH  
TEXAS  
MUNICIPAL  
WATER  
DISTRICT



# SISTER GROVE REGIONAL WATER RESOURCE RECOVERY FACILITY

REGIONAL SERVICE THROUGH UNITY... MEETING OUR REGION'S NEEDS TODAY AND TOMORROW



**WATER  
SERVICES**



**WASTEWATER  
SERVICES**



**SOLID WASTE  
SERVICES**

**North Texas Municipal  
Water District**

501 East Brown St.  
Wylie, TX 75098

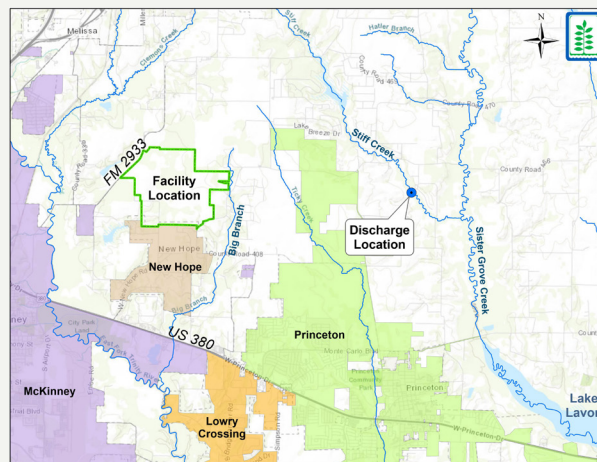
972.442.5405

[www.ntmwd.com](http://www.ntmwd.com)

The North Texas Municipal Water District (NTMWD) provides wholesale wastewater treatment services to over 1.6 million people across 24 communities in the North Texas region. Some of the **fastest growing communities in the nation** are located in the northern part of the NTMWD service area. To continue reliably serving these thriving communities, **we must plan for the future.**

To meet the growing needs in the northern part of our regional system, the **Sister Grove Regional Water Resource Recovery Facility (RWRRF) is being constructed.** Following a thorough evaluation to identify a suitable location for the facility in 2016 and 2017, NTMWD purchased 1,000 acres of land near the FM 2933 and County Road 336 intersection. In February of 2020, the Texas Water Development Board (TWDB) approved \$459 million in low-interest state funding for the Sister Grove RWRRF. The TWDB Clean Water State Revolving Fund (CWSRF) Program financing is expected to save \$212.8 million in interest costs on this project. In April of 2020, NTMWD received its discharge permit from the Texas Commission on Environmental Quality (TCEQ). Construction began in Fall 2020.

## SISTER GROVE REGIONAL WATER RESOURCE RECOVERY FACILITY MAP



# WHAT IS A WATER RESOURCE RECOVERY FACILITY?

Water Resource Recovery Facilities provide continuous wastewater treatment to meet water quality limits stated in the TCEQ issued permit prior to discharging into a body of water. These facilities are a critical element in maintaining the health of our watersheds and the public. NTMWD is voluntarily implementing a watershed protection plan to further safeguard the Lavon Lake watershed with increasing urbanization in the area. Learn more about the watershed protection plan at [ntmwd.com/watershed](https://ntmwd.com/watershed).

## WHY DO WE NEED THE NEW SISTER GROVE RWRRF?

**CURRENTLY  
700K+  
PEOPLE ARE SERVED**

in our northern service area by two existing facilities and projected growth will exceed the existing facilities serving Collin County in the very near future.

## SISTER GROVE RWRRF AT A GLANCE:

- Located on 1,000 acres near the FM 2933 and CR 336 intersection
- \$459 million low-interest funding from the TDWB; Expected to save \$212.8 million in debt service for NTMWD and those we serve
- NTMWD received TCEQ permit in April 2020
- Currently permitted to 64 million gallons per day (MGD) annual average daily flow (AADF)
- Phase I construction/operations includes 16 MGD AADF and 64 MGD peak flows
- Phase II construction to expand to 32 MGD AADF and 128 MGD peak flows began in September 2025
- Includes advanced treatment and odor control technologies
- A discharge location was identified based on proximity and operational factors



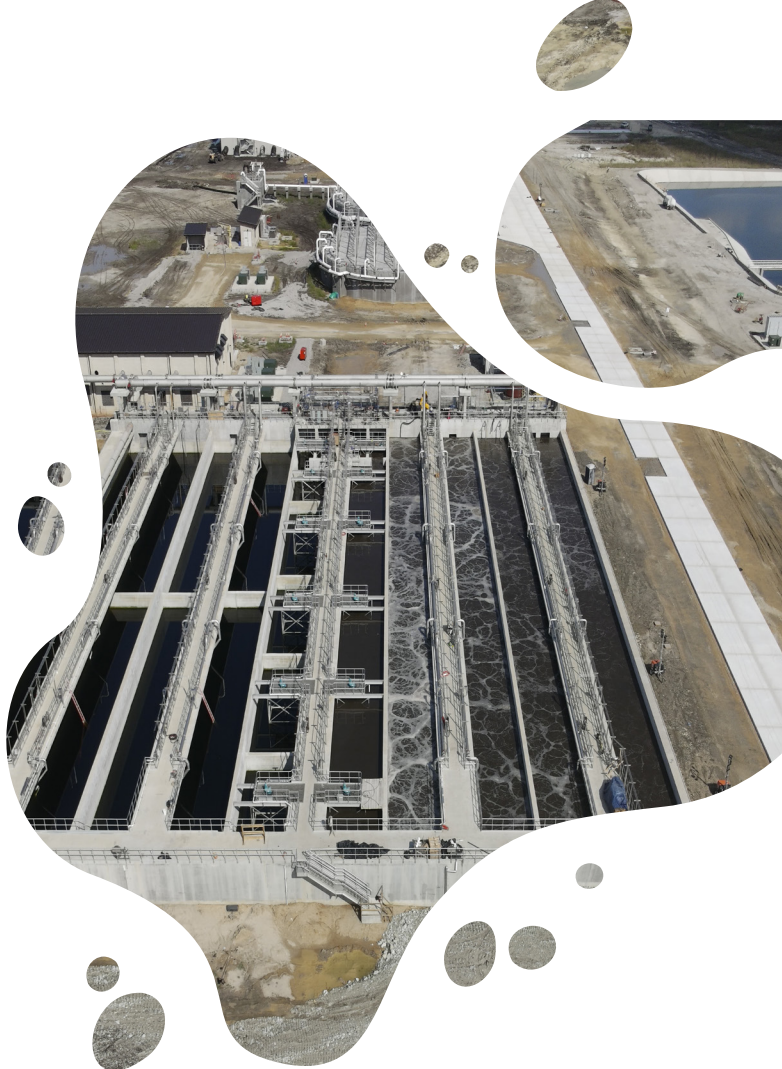


# A PART OF THE SURROUNDING COMMUNITY

NTMWD is building the new Sister Grove RWRRF to serve one of the fastest growing areas in the country. As part of our commitment to being a good neighbor to our northern service area, the plant is centrally located within the 1,000-acre site with additional screening of visible structures and facilities with landscaping and berms. The plant is also designed to **mitigate and minimize local impacts to odor, noise or light** from the facility.

Advanced treatment and odor control technologies will be implemented, and noise will be addressed through the use of sound enclosures or dedicated buildings around specific equipment and processes.

The facility's lighting plan will incorporate modern LED technology, specifically warm-white lighting, downward-facing fixtures, and motion-activated noncritical lighting, all aimed at minimizing the impact of lighting on the surrounding areas.



## PROTECTING & MITIGATING ENVIRONMENTAL IMPACTS

Protecting water resources and preserving the natural environment is a high priority. Similar NTMWD facilities operate in this same manner and **discharged water is typically of higher quality than naturally existing water** in creeks and streams. As our team determined the location of the facility and its outfall location, a site was selected to minimize impacts on area streams and Lavon Lake. The Sister Grove RWRRF facility is being built to maintain the natural surroundings at the outfall location.

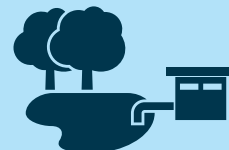
## AS THE PROJECT CONTINUES, NTMWD WILL:



**MEET OR EXCEED ALL  
LOCAL, STATE AND  
FEDERAL ENVIRONMENTAL  
PROTECTION  
REQUIREMENTS FROM  
DESIGN THROUGH  
OPERATIONS**



**ENGAGE AND INFORM  
AREA COMMUNITIES  
THROUGHOUT FACILITY  
PLANNING, CONSTRUCTION  
AND OPERATION**

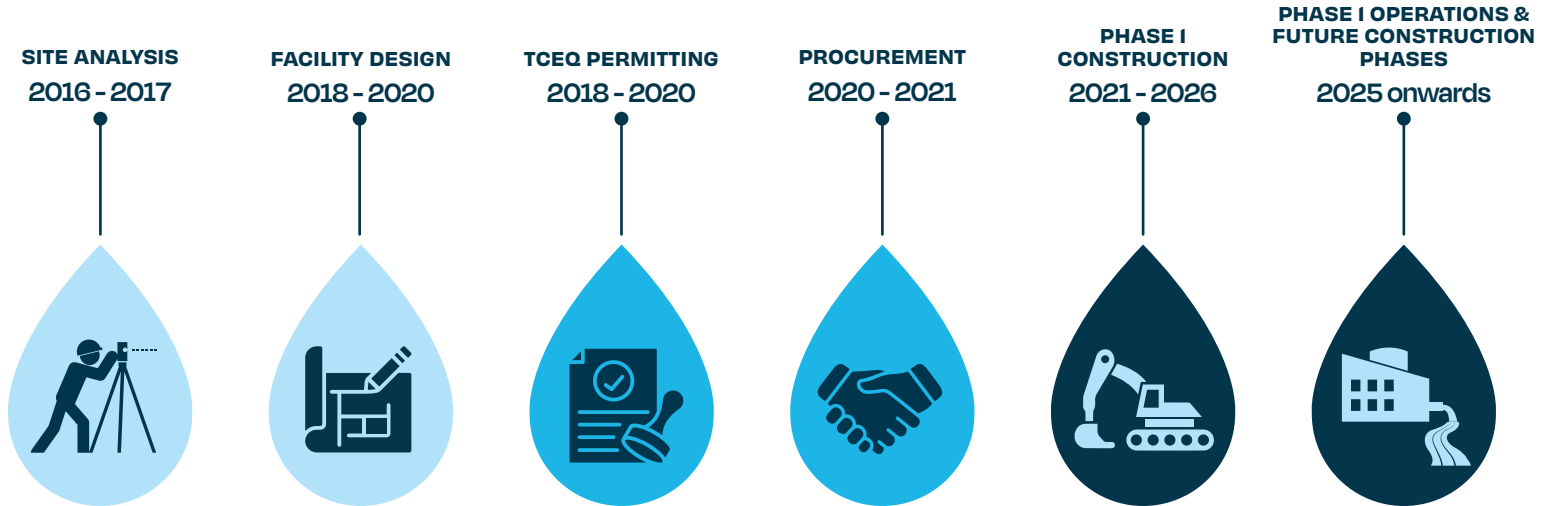


**TREAT RECOVERED  
WATER RESOURCES  
TO HIGH QUALITY IN  
COMPLIANCE WITH  
TCEQ REQUIREMENTS**

# PROJECT TIMELINE

NTMWD's Sister Grove RWRRF is undergoing the extensive start-up process. Start-up operations are not typical of normal operations which is realized after all systems are full tested and construction is complete. Construction is ongoing as crews continue working across the site, finishing out the facilities, testing equipment, finalizing electrical work, instrumentation, and roadwork paving. As part of the start-up process, the plant began receiving wastewater flows in late August 2025 and discharged its first treated effluent into Stiff Creek by mid-September. The plant's effluent meets or exceeds regulatory requirements.

Phase 1 of Sister Grove RWRRF is anticipated to **be fully operational in Spring 2026**. The following timeline shows approximate dates of completion for various project phases.



## COMMUNICATION & PROGRESS UPDATES

NTMWD held two public meetings on this project, and District staff spoke about the project at both McKinney and New Hope city council meetings. NTMWD continues to provide public updates during all steps of this project, from construction through operations.

### OUR TEAM CONTINUES TO:

#### OBJECTIVE 1

**WORK WITH  
COMMUNITY MEMBERS  
TO PLAN FOR AND  
REDUCE IMPACTS DUE  
TO CONSTRUCTION**

#### OBJECTIVE 2

**COMMUNICATE  
REGULARLY  
ON PLANNING  
CONSTRUCTION AND  
OPERATIONS**

#### OBJECTIVE 3

**PROVIDE UPDATES  
ON THE NTMWD  
WEBSITES AND  
SOCIAL MEDIA  
CHANNELS**

### HAVE QUESTIONS?

Contact us at 972-442-5405 or [projects@ntmwd.com](mailto:projects@ntmwd.com)