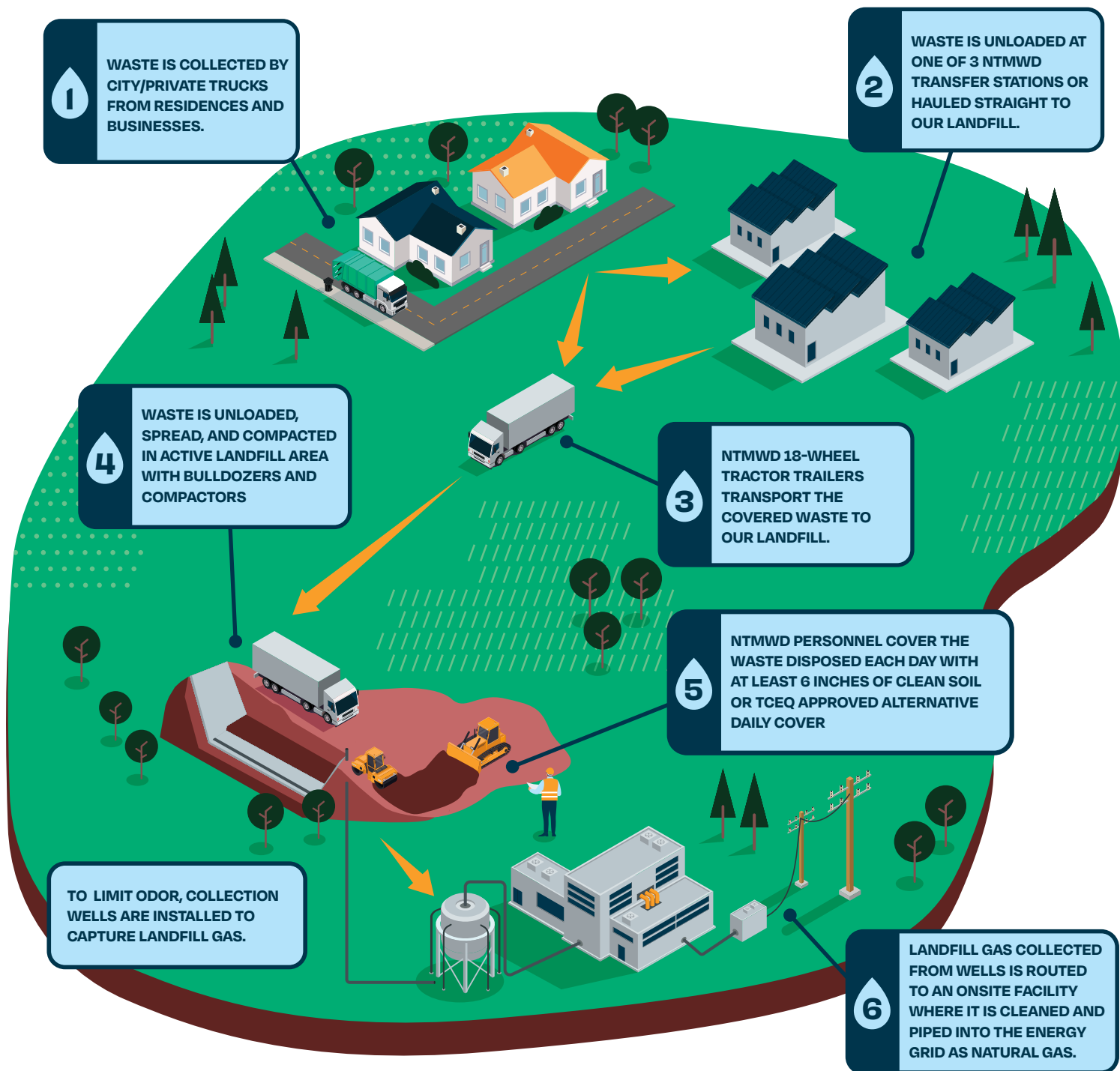




NORTH
TEXAS
MUNICIPAL
WATER
DISTRICT

TAKING CARE OF WASTE FROM HOME TO DISPOSAL




FAST FACTS

 | **3**
TRANSFER STATIONS
PERMITTED TO PROCESS

UP
TO

4,100 TONS
OF SOLID WASTE
PER DAY

*Beginning Jan. 2, 2025, permitted tonnage up to 4,125.

OVER
 | **1** MILLION TONS
OF SOLID WASTE
DISPOSED EACH YEAR