

PROJECT PIPELINE



#MORETHANWATER

SNAPSHOT OF ACTIVE PROJECTS

Total number of active projects by service as of Dec. 31

84



WATER

44



WASTEWATER

9



SOLID WASTE

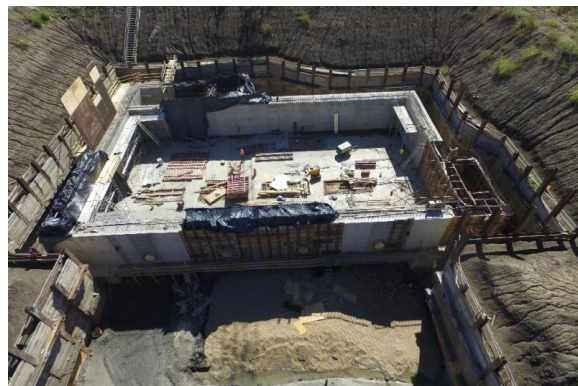
Project Highlights



SCADA System Upgrades

WHY: To replace obsolete or discontinued hardware and equipment

WHAT: New radio systems with cellular backup to improve communications from remote sites back to the control rooms at the Wylie Water Treatment Plant and the Wilson Creek Regional Wastewater Treatment Plant.



Main Stem Pump Station & Pipeline Update

WHY: To increase the capacity of the wetland (East Fork Water Reuse Project) by diverting water from the "main stem" of the Trinity River. The naturally filtered water is then pumped 44 miles to Lavon Lake to supplement our water supplies.

The control rooms will also have a new Human Machine Interface (HMI) to improve operations. Through the HMI, an operator can see schematics of the systems and turn switches and pumps on or off, for example.

WHERE: Remote sites on the transmission and raw water system as well as the Upper East Fork Interceptor System

WHEN: Design began on the transmission and raw water system in December 2013. Construction began in March 2016. Anticipated completion is June 2018. For the Upper East Fork Interceptor System, design began in April 2015. Construction began in February 2016. Anticipated completion is February 2018.

HOW MUCH: \$12.7 million for construction of both systems



Stewart Creek West Wastewater Treatment Plant

WHY: To expand the plant average capacity from 5 MGD to 10 MGD, increase peak capacity from 15.5 MGD to 35 MGD, and implement new treatment processes to remove phosphorus

WHAT: Plant expansion includes a new consolidated influent pump station, headworks with screening and grit removal equipment, covered primary clarifier, and Biological Nutrient Removal (BNR) system with two aeration basins with anaerobic, anoxic and aerobic zones for phosphorous and nitrogen removal. Also, two new secondary clarifiers, cloth-media disk filters, UV disinfection system, and post-aeration treatment. New solids handling building is also in construction with two new belt filter presses with lime conditioning for odor control. Entire plant will have new odor control systems, new

WHAT: The project, a 100 MGD pump station and 17-mile/72-inch diameter pipeline, is well underway and making significant progress. The pumps are delivered, the coffer dam that will be used to install the river intake screens has been completed, and micro-tunneling the river intake pipes through the riverbank has begun. All pipe is delivered with 64% already installed. The vertical turbine pumps for the conveyance pump station (CPS) are being tested with delivery expected in late February, and the existing expansion pump cans at the CPS have been cleaned in preparation for installation of the new pumps. The weir box structure at the East Fork Wetland is complete and in operation.

WHERE: West of Hwy 34 south of Kaufman near the town of Scurry

WHEN: Completion expected in 2019

HOW MUCH: \$120 million



South Mesquite Creek Regional Wastewater Treatment Plant Filter & Ultraviolet Disinfection Improvements

WHY: To increase our filtration capacity and convert from chlorine disinfection to ultraviolet (UV) disinfection to meet regulatory requirements and improve plant safety.

WHAT: Plant improvements include addition of three new cloth-media disc filters in place of older filter technology to remove suspended solids; demolition of out of service secondary clarifiers to make room for the new UV basin; construction of the new UV basin and install of the new UV equipment to disinfect the treated water, and construction of a new electrical building to house the power source for the new equipment.

WHEN: The start of the project was June 2017 and will be complete January 2019.

chemical systems and a power generation facility.

WHERE: In Frisco on 4th Army Memorial Drive north of Lebanon Drive between Teel Parkway and Legacy Drive

WHEN: Construction started in October 2015 and is expected to be completed on August 2018.

HOW MUCH: \$62 Million

[\[READ MORE +\]](#)



White Rock Creek Lift Stations Improvements

WHY: Perform station equipment upgrades to increase firm capacity from 12 MGD to 19 MGD.

WHAT: Replace all six station pumps, motors, adjustable frequency drives, piping and valves. Replace electrical systems equipment, add climate controlled electrical building, and install larger backup generator. Improve lift station odor control and update instrumentation such as wet well level indicators and flow meters, system programming, operating controls and monitoring.

WHERE: North of E. Campbell Road between Greenville Avenue and N. Plano Road

WHEN: Design began in 2016. Construction started in October 2017. Anticipated completion in October 2018.

HOW MUCH: \$5.7M

WHERE: East of Lawson Road, north of I-20 in Mesquite

HOW MUCH: \$10 million



121 Regional Disposal Facility Leachate Pump Station & Gravity Sewer Project

WHY: To eliminate the need to haul leachate liquid captured in the landfill (250,000 gallons weekly) to an off-site location; Convert the Fleet Maintenance Shop, Heavy Equipment Shop and Scale House from aerobic septic systems to a gravity sewer system to support future growth at the landfill

WHAT: Installed leachate pump station and force main to remove and discharge up to 100,000 gallons per day of leachate into the Melissa sanitary sewer system; Installed a gravity sewer line connected to the City of he Melissa sanitary sewer pipeline south of the 121 RDF landfill; Removed and disposed of existing aerobic septic systems;

WHERE: Located at the 121 Regional Disposal Facility in Melissa

WHEN: Projects began in May 2017 and will end January 2018.

HOW MUCH: \$1.8 million

Recently Completed Projects



Lookout Drive Transfer Station

The Lookout Drive Transfer Station in Richardson is complete and operational as of August 2017. We are already seeing significant operational benefits from the new state-of-the-art facility. The top-load design allows for larger loads which reduces the number of trips to the landfill, fuel costs, emissions and vehicle wear and tear.

[\[READ MORE +\]](#)

New Clearwell Installed

The new 10 million gallon clearwell at the Wylie Water Treatment Plant complex is operational as of May 2017 and is expected to be completed by March 2018. Take a look at this project from start to finish to see the scope of this installation.

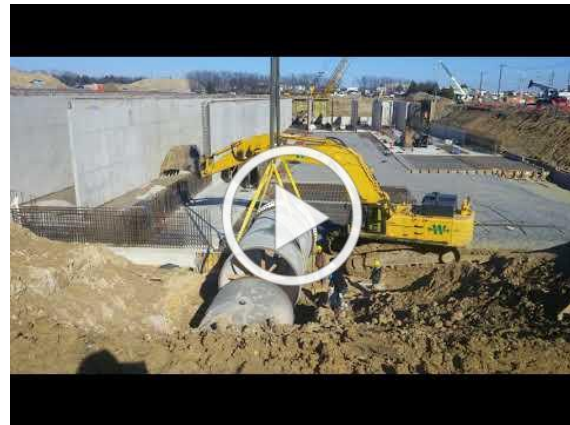


Gas to Energy Plant

Our new gas-to-energy plant is now up and running. This remarkable project, a partnership with Morrow Renewables, allows us to filter out the methane in landfill gas and convert it to renewable natural gas. The revenues from this project will help to offset the operational costs of the landfill.

[\[READ MORE +\]](#)

[\[Dallas Morning News Article\]](#)



Solid Waste System Highlights

Our solid waste system, which serves five Member Cities and other customers throughout Collin County and the surrounding area, is designed to process and dispose of waste safely and reliably while protecting both the environment and water quality. Our solid waste facilities are located, designed, operated and monitored in

By The Numbers

- 1** LANDFILL
- 2** COMPOSTING FACILITIES
- 3** TRANSFER STATIONS
- 4** CONVENIENCE CENTERS
- 5** MEMBER CITIES
- 101** SOLID WASTE EMPLOYEES
- 3,900** TONS OF WASTE DAILY
- 50,000** TONS OF YARD WASTE COMPOSTED ANNUALLY
- 1 MILLION +** TONS OF WASTE

full compliance with regulations set forth
by TCEQ and the EPA.

ACCEPTED EACH YEAR

[\[READ MORE +\]](#)

Doing Business with North Texas

NTMWD invites talented, experienced and ethical contractors, consultants, and suppliers to bid on design and construction projects that align with their experience and expertise. Visit the [Business Opportunities](#) page of our website to learn more.



CORE VALUES - ITRUST

Integrity | Trust | Respect | Unity | Safety | Teamwork

STAY CONNECTED

