



NORTH  
TEXAS  
MUNICIPAL  
WATER  
DISTRICT

North Texas Municipal Water District

# THE VALUE OF WATER #MoreThanWater

REGIONAL SERVICE THROUGH UNITY...MEETING OUR REGION'S NEEDS TODAY AND TOMORROW

## North Texas Municipal Water District

Administration Building  
501 East Brown St.  
P.O. Box 2408  
Wylie, TX 75098

972.442.5405  
[www.NTMWD.com](http://www.NTMWD.com)

## WATER IS ESSENTIAL

For the quality of life we enjoy in North Texas, water is critical for communities to thrive, businesses to operate, and is necessary for public health and safety.

Getting clean, safe water to about 1.7 million people in nearly 80 North Texas communities is no easy task, but it's one that the North Texas Municipal Water District (NTMWD) takes very seriously.

Our mission is to provide high quality water and the most dependable service at the lowest possible cost.



SERVE  
about  
**80** COMMUNITIES

Service area of 2,200  
square miles in 10 counties

Serving 1.7 million people in one  
of the fastest-growing regions  
in the country



WATER PUMP  
STATIONS



WATER TREATMENT PLANTS  
806+ MGD Capacity  
(million gallons/day)



WATER TRANSMISSION  
PIPELINES



WATER



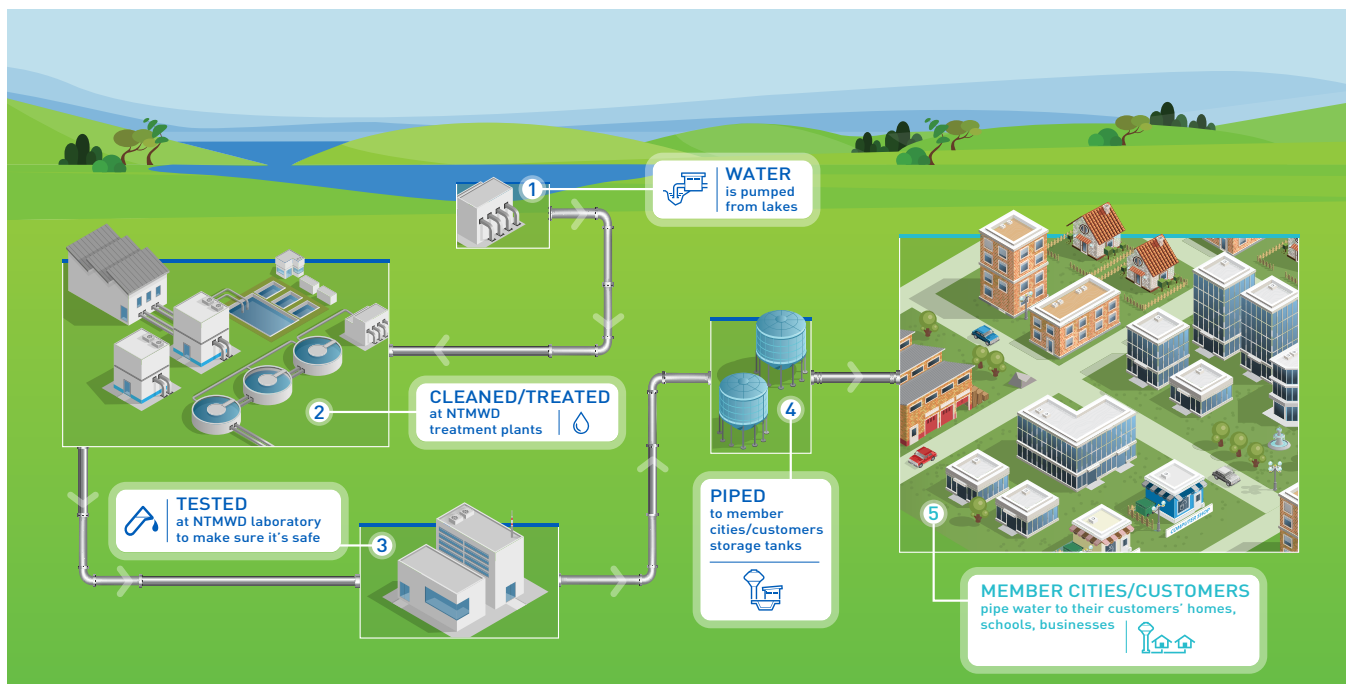
WASTEWATER



SOLID WASTE

# GETTING WATER TO YOU

Shared Regional Systems Serves nearly 80 North Texas Communities

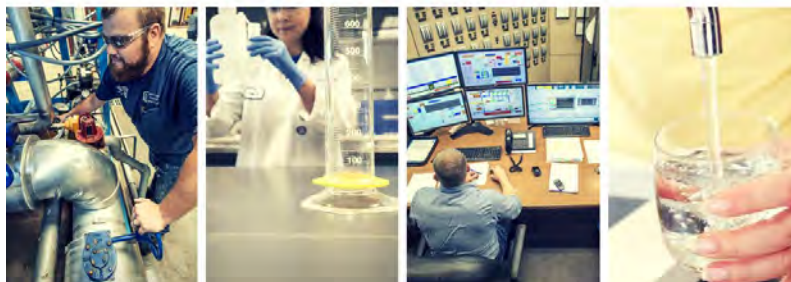


Our complex water system requires hundreds of miles of pipes and many pump stations to transport the water from lakes to our treatment plants, where it is cleaned, treated and tested to make sure it's safe.

Once it's treated for drinking, our distribution systems deliver water to local communities 24/7.



From lake to tap, water rates pay for **#MoreThanWater**



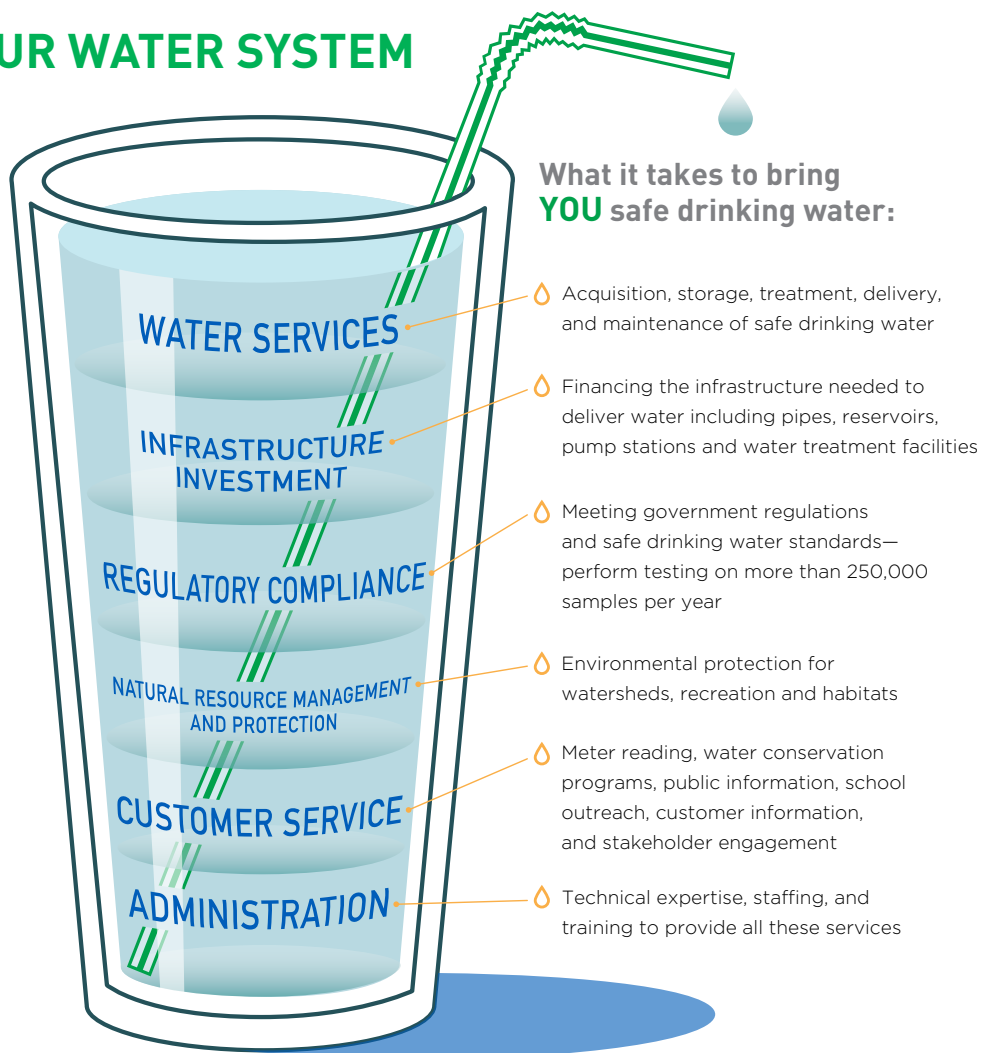
## MORE THAN WATER

The rates we charge for water fund more than water. The communities we serve are paying for the costs of the shared regional system.

You may wonder why rates need to increase if you are conserving water. While the best way to manage your monthly bill is by using water efficiently, **overall water rates are not set by how much water is used.**

Water delivery is a **service** and the District's wholesale rate must cover all the steps needed to operate, maintain and expand the water system, as well as to repay money borrowed to build existing and future infrastructure. Repairing and replacing aging infrastructure and adhering to new government regulations also contribute to rising water costs.

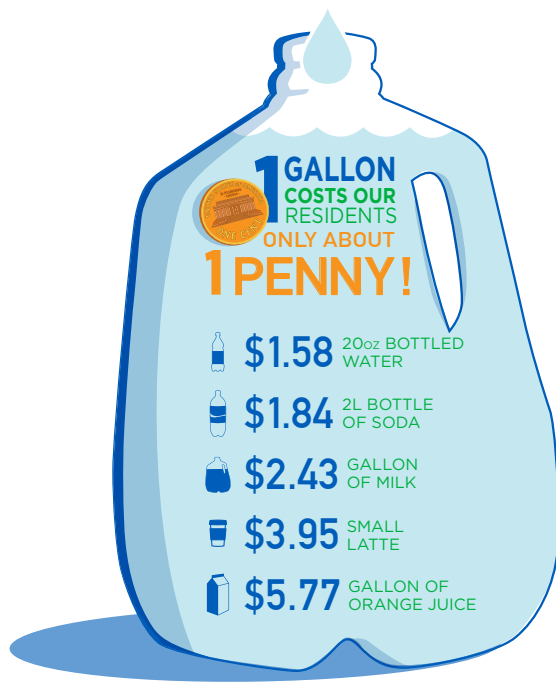
## YOUR WATER SYSTEM



## WATER: A GOOD VALUE

NTMWD charges Member Cities \$2.78 per 1,000 gallons of treated water and customer entities pay \$2.83 per 1,000 gallons. This amounts to about one-quarter of a penny for a gallon of treated water delivered to the communities we serve. Our wholesale water rates are lower or comparable to similar water suppliers in Texas. Nationally, our costs are lower than average for combined services like water and sewer.

Compared to other household expenses—mobile phones, Internet, cable television—water is an exceptionally good deal and has historically been one of the lowest-cost utility services. Water is the one utility service no one can live without.



*\*Estimated cost to consumers covering NTMWD and city rates. Actual city rates vary.*

**The costs of other drinks are significantly higher than water.** If tap water and soda were to cost the same, your water bill would skyrocket more than 10,000 percent.

As a wholesale water provider, NTMWD makes no profits and collects no property or sales taxes to fund the water system. The revenues collected from the communities we serve allow us to fund the projects and programs required to ensure safe and reliable water today and tomorrow.

## OUR FUTURE DEPENDS ON WATER

**North Texas is one of the fastest growing regions in the country and the population is expected to double over the next 50 years. It is imperative that we plan now to meet the growing needs of our communities and businesses.**

We all benefit from the planning done by previous generations for the water we use today—and future generations will depend on us to plan and invest wisely. New water projects require upfront investment—sometimes years before consumers experience the benefit. The availability of water is critical to sustaining our economy and to continuing to attract employers to the area. While water conservation is essential to help meet future needs by stretching our existing supplies, NTMWD cannot meet this demand without new water supplies and a reliable water system.

### For more facts about NTMWD water rates:

Visit [www.NTMWD.org](http://www.NTMWD.org) and follow us on social media for updates on how water rates pay for **#MoreThanWater**.