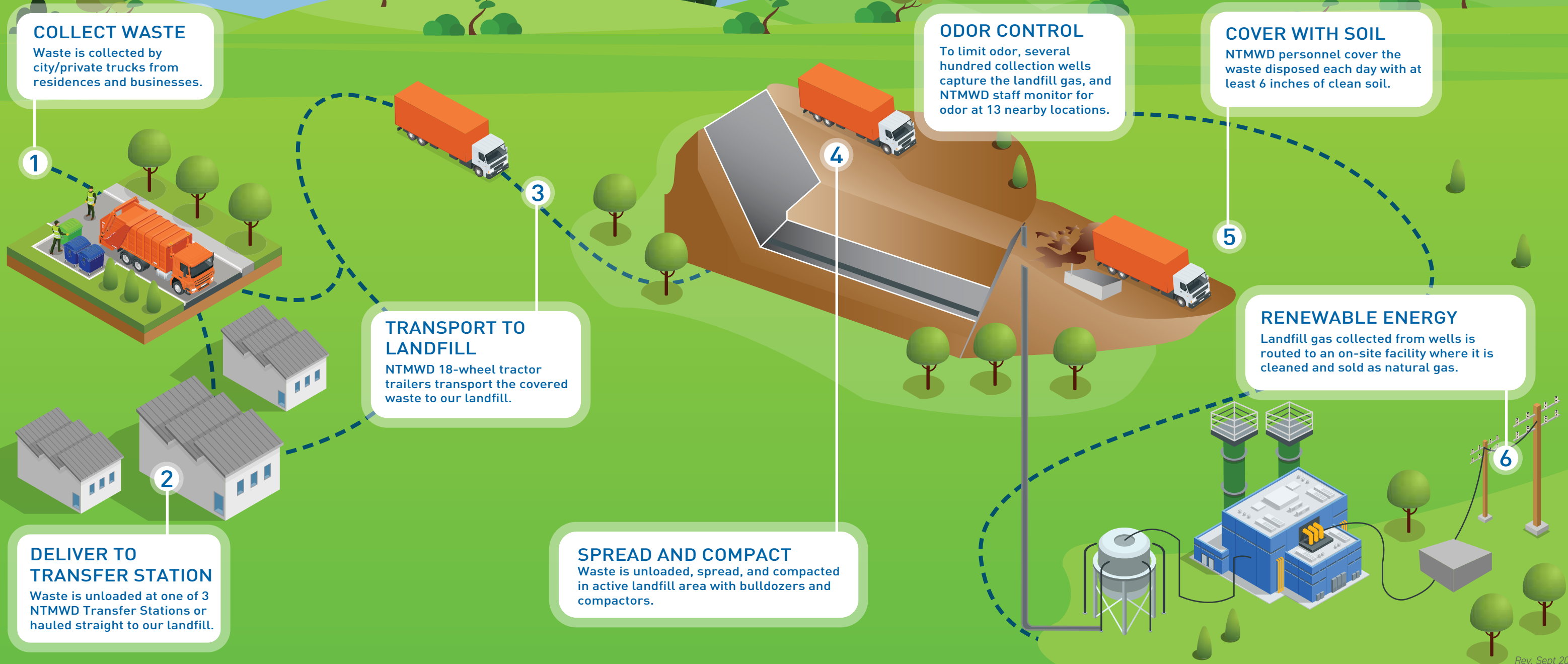


Taking Care of Waste - From Home to Disposal



COLLECT WASTE

Waste is collected by city/private trucks from residences and businesses.

1

TRANSPORT TO LANDFILL

NTMWD 18-wheel tractor trailers transport the covered waste to our landfill.

3

DELIVER TO TRANSFER STATION

Waste is unloaded at one of 3 NTMWD Transfer Stations or hauled straight to our landfill.

2

ODOR CONTROL

To limit odor, several hundred collection wells capture the landfill gas, and NTMWD staff monitor for odor at 13 nearby locations.

4

COVER WITH SOIL

NTMWD personnel cover the waste disposed each day with at least 6 inches of clean soil.

5

RENEWABLE ENERGY

Landfill gas collected from wells is routed to an on-site facility where it is cleaned and sold as natural gas.

6

SPREAD AND COMPACT

Waste is unloaded, spread, and compacted in active landfill area with bulldozers and compactors.