

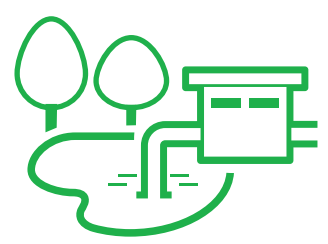
Temporary Change in Water Treatment Process

RAW WATER
PUMPED

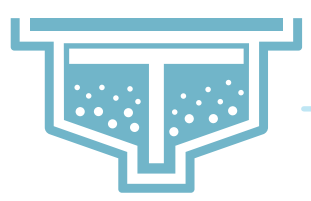
WATER
TREATED

TREATED WATER
DELIVERED

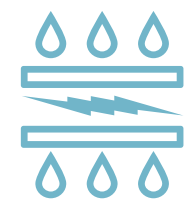
LAKE WATER
PUMPED TO PLANT



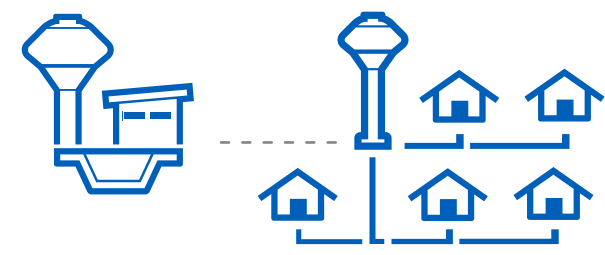
SEDIMENT AND
DEBRIS REMOVED



OZONE
DISINFECTION



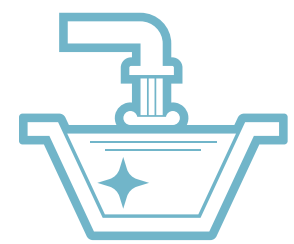
WATER DISTRIBUTED BY
CITIES TO CUSTOMERS



CHLORINE
DISINFECTION



FINAL PARTICLES
FILTERED



~~AMMONIA
ADDED~~



DURING NTMWD'S ANNUAL, 28-DAY CHANGE IN DISINFECTANT:

AMMONIA IS REMOVED FROM THE DISINFECTION PROCESS. WITHOUT AMMONIA, THE CHLORINE IN THE WATER MAY BE MORE NOTICEABLE, BUT THE AMOUNT IS CONSISTENT WITH LEVELS YEAR ROUND.



CHLORINE



AMMONIA

FLUSHING FROM FIRE HYDRANTS CAN BE AN IMPORTANT PART OF MAINTAINING THE WATER SYSTEM AND HIGH WATER QUALITY. CITIES MAY FLUSH TO MOVE WATER THROUGH PIPES MORE QUICKLY.



TESTING IS CONTINUALLY CONDUCTED THROUGHOUT TO ENSURE WATER QUALITY. RESULTS ARE POSTED ON CITY AND NTMWD WEBSITES.

