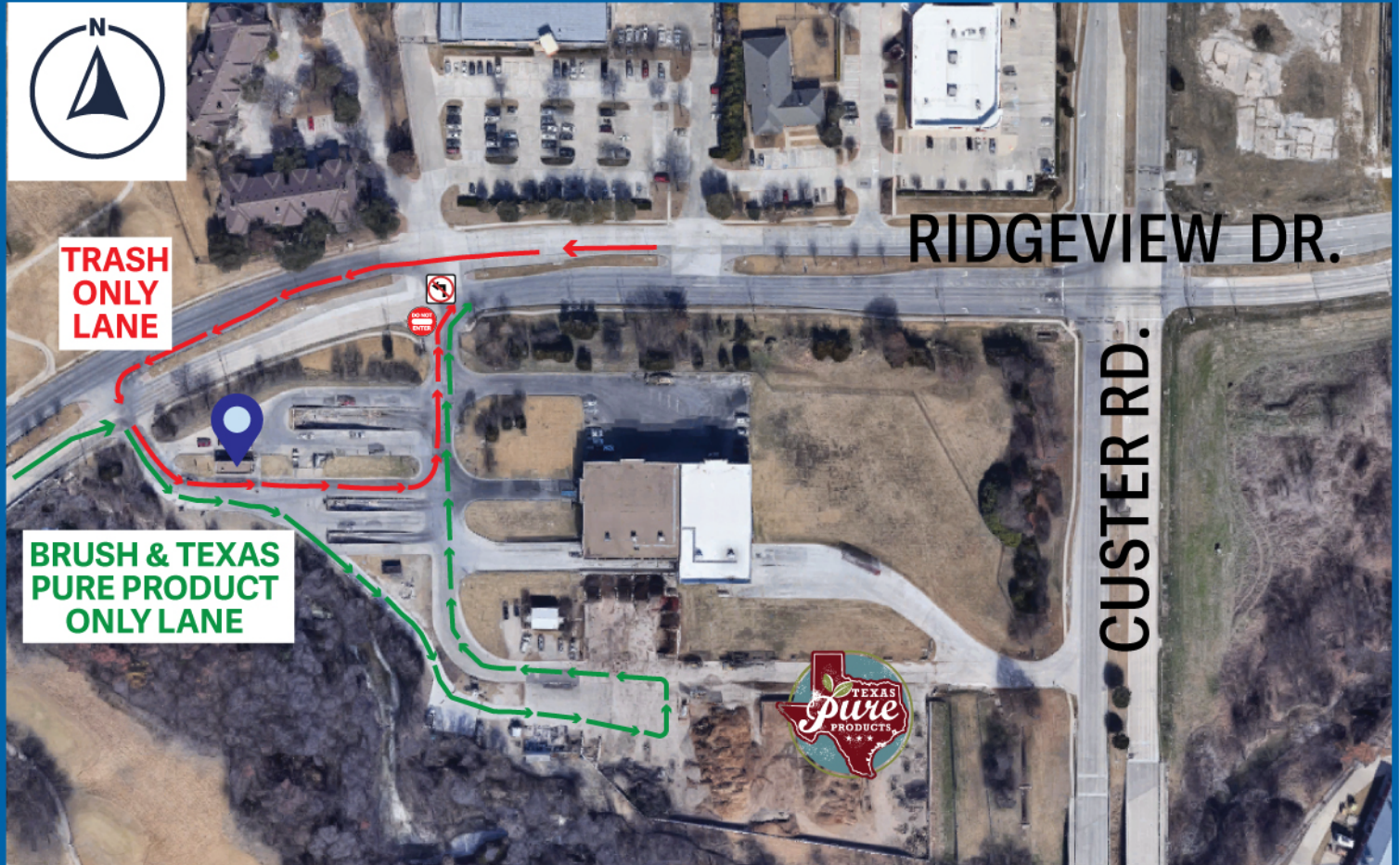




NORTH
TEXAS
MUNICIPAL
WATER
DISTRICT

Custer Road Transfer Station



Waste Drop-Off Route Changes Begins September 1

Yard Waste Drop-Off & Mulch/Compost
Pick-Up: Enter from the Eastbound
direction of Ridgeview Drive.

Household Trash Drop-Off:
Enter from the Westbound direction of
Ridgeview Drive.